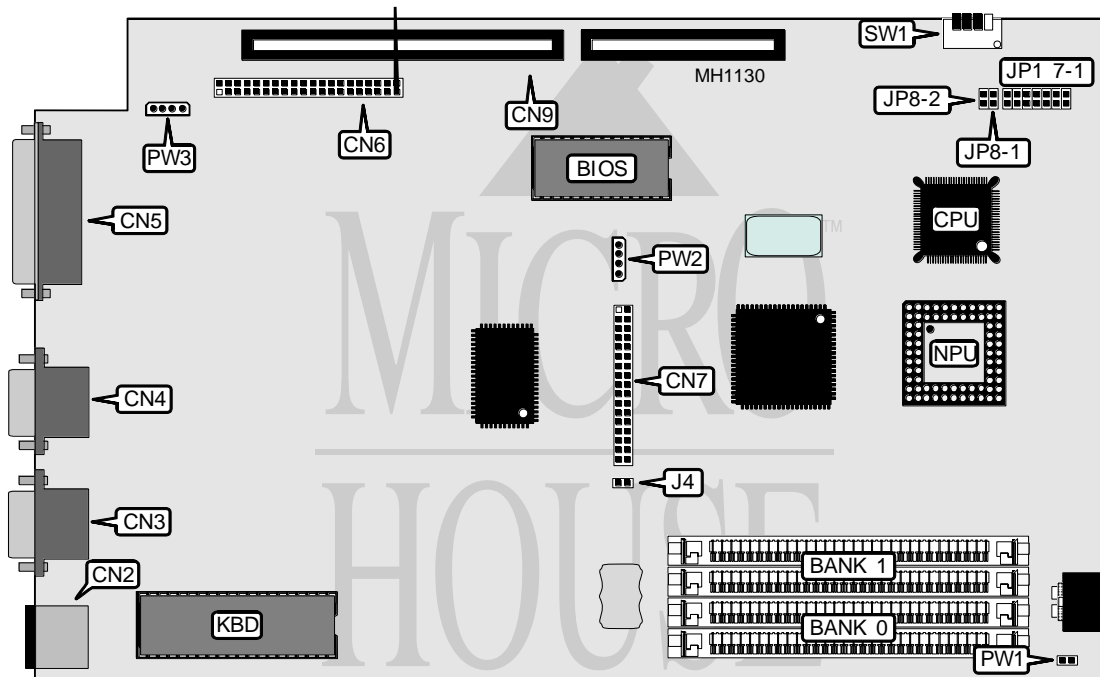


BIOSTAR MICROTECH INTERNATIONAL CORPORATION

MB-2500SX

Processor	80386SX
Processor Speed	16/20/25MHz
Chip Set	C & T
Max. Onboard DRAM	16MB
Cache	None
BIOS	AMI
Dimensions	284mm x 175mm
I/O Options	16-bit riser card slot, floppy drive interface, IDE interface, serial ports (2), parallel port/external floppy drive port
NPU Options	80387



CONNECTIONS			
Purpose	Location	Purpose	Location
External power	CN2	IDE drive interface LED	JP1-4
Serial port 2	CN3	Power LED	JP1-5
Serial port 1	CN4	Network activity LED	JP1-6
Parallel port/external floppy drive port	CN5	Network activity LED	JP1-7
IDE drive interface	CN6	Floppy drive interface LED	JP8-1
Floppy disk interface	CN7	Floppy disk eject button	JP8-2
16-bit riser card	CN9	Power switch	PW1
Turbo switch	JP1-1	Floppy drive power	PW2
Turbo LED	JP1-2	IDE drive power	PW3
Reset switch	JP1-3		

Continued on next page . . .

BIOSTAR MICROTECH INTERNATIONAL CORPORATION

MB - 2500SX

... continued from previous page

USER CONFIGURABLE SETTINGS		
Function	Jumper	Position
í Battery type select internal	J4	Closed
Battery type select external	J4	Open
í Monitor type select color	SW1/3	On
Monitor type select monochrome	SW1/3	Off
í External floppy drive select A: / Internal floppy drive select B:	SW1/4	On
External floppy drive select B: / Internal floppy drive select A:	SW1/4	Off

DRAM CONFIGURATION		
Size	Bank 0	Bank 1
1MB	(2) 256K x 9	(2) 256K x 9
2MB	(2) 1M x 9	NONE
4MB	(2) 1M x 9	(2) 1M x 9
8MB	(2) 4M x 9	NONE
10MB	(2) 4M x 9	(2) 1M x 9
16MB	(2) 4M x 9	(2) 4M x 9

PARALLEL PORT CONFIGURATION		
Setting	SW1/1	SW1/2
LPT2 at 378-37F	On	Off
LPT3 at 378-37F	Off	On