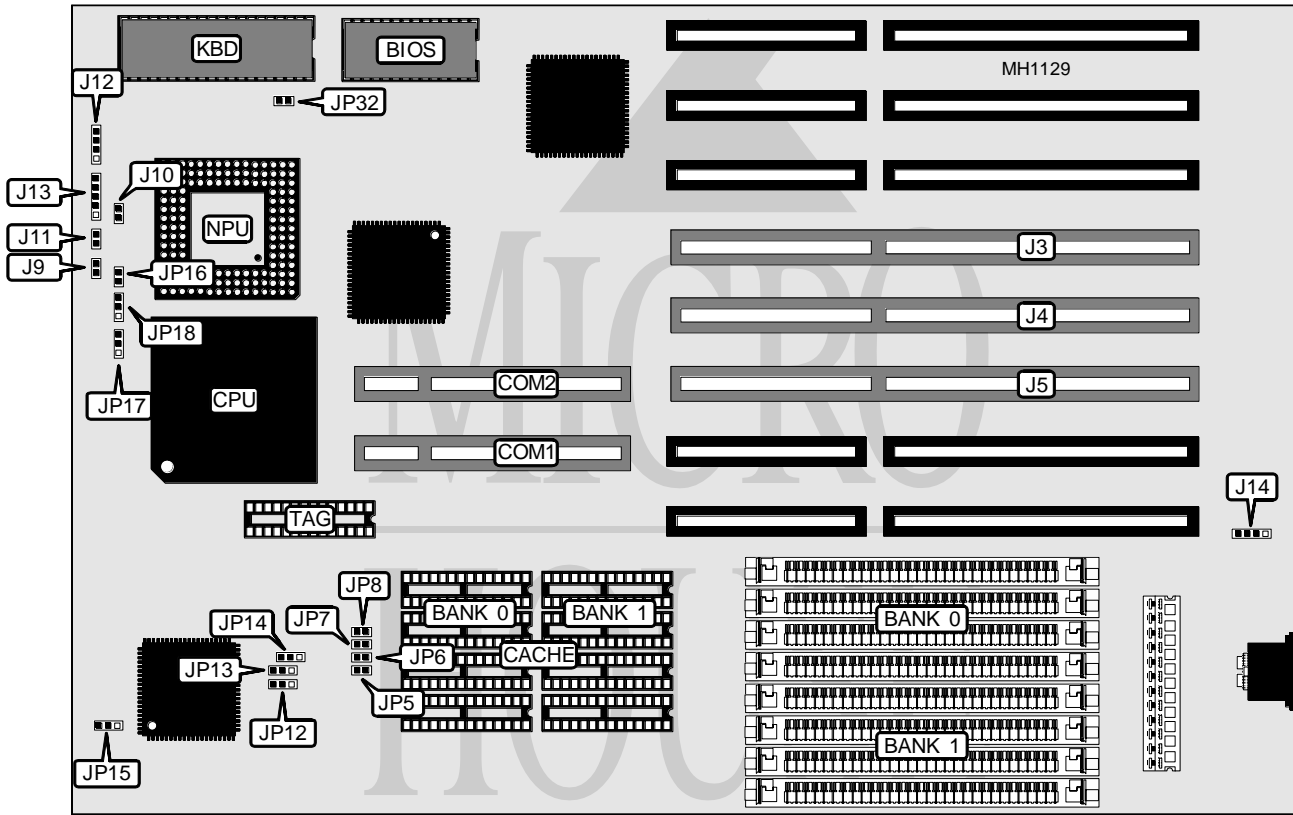


JOINDATA SYSTEMS, INC.

G 4 8 6 H V L

Processor	80486SX/80486DX/80486DX2
Processor Speed	25/33/50(internal)/50/66(internal)MHz
Chip Set	HINT
Max. Onboard DRAM	128MB
Cache	64/128/256KB
BIOS	AMI
Dimensions	330mm x 218mm
I/O Options	32-bit VESA local bus card slots (2)
NPU Options	4167



CONNECTIONS			
Purpose	Location	Purpose	Location
32-bit VESA local bus slot	COM1	Turbo switch	J11
32-bit VESA local bus slot	COM2	Speaker	J12
32-bit EISA cards	J3, J4, J5	Power LED & keylock	J13
Reset switch	J9	External battery	J14
Turbo LED	J10		

Continued on next page . . .

JOINDATA SYSTEMS, INC.

G 4 8 6 H V L

... continued from previous page

USER CONFIGURABLE SETTINGS		
Function	Jumper	Position
í Monitor type select color	JP32	Closed
Monitor type select monochrome	JP32	Open

DRAM CONFIGURATION		
Size	Bank 0	Bank 1
4MB	(4) 1M x 9	NONE
8MB	(4) 1M x 9	(4) 1M x 9
16MB	(4) 4M x 9	NONE
20MB	(4) 1M x 9	(4) 4M x 9
20MB	(4) 4M x 9	(4) 1M x 9
32MB	(4) 4M x 9	(4) 4M x 9
64MB	(4) 16M x 9	NONE
128MB	(4) 16M x 9	(4) 16M x 9

CACHE CONFIGURATION			
Size	Bank 0	Bank 1	TAG
64KB	(4) 8K x 8	(4) 8K x 8	(1) 8K x 8
128KB	(4) 32K x 8	NONE	(1) 32K x 8
256KB	(4) 32K x 8	(4) 32K x 8	(1) 32K x 8

CACHE JUMPER CONFIGURATION							
Size	JP5	JP6	JP7	JP8	JP12	JP13	JP14
64KB	Open	Open	Open	Open	1 & 2	1 & 2	1 & 2
128KB	Closed	Open	Open	Closed	2 & 3	2 & 3	1 & 2
256KB	Closed	Closed	Closed	Closed	2 & 3	2 & 3	2 & 3

Note: Pins designated should be in the closed position.

CPU TYPE CONFIGURATION				
Type	JP15	JP16	JP17	JP18
80486SX-25/33	pins 2 & 3 closed	Open	Open	pins 2 & 3 closed
80487SX-33	pins 2 & 3 closed	Closed	pins 2 & 3 closed	pins 1 & 2 closed
80486DX-25/33	pins 2 & 3 closed	Closed	pins 1 & 2 closed	pins 1 & 2 closed
80486DX-50	pins 1 & 2 closed	Closed	pins 1 & 2 closed	pins 1 & 2 closed
80486DX2-25/33	pins 2 & 3 closed	Closed	pins 1 & 2 closed	pins 1 & 2 closed