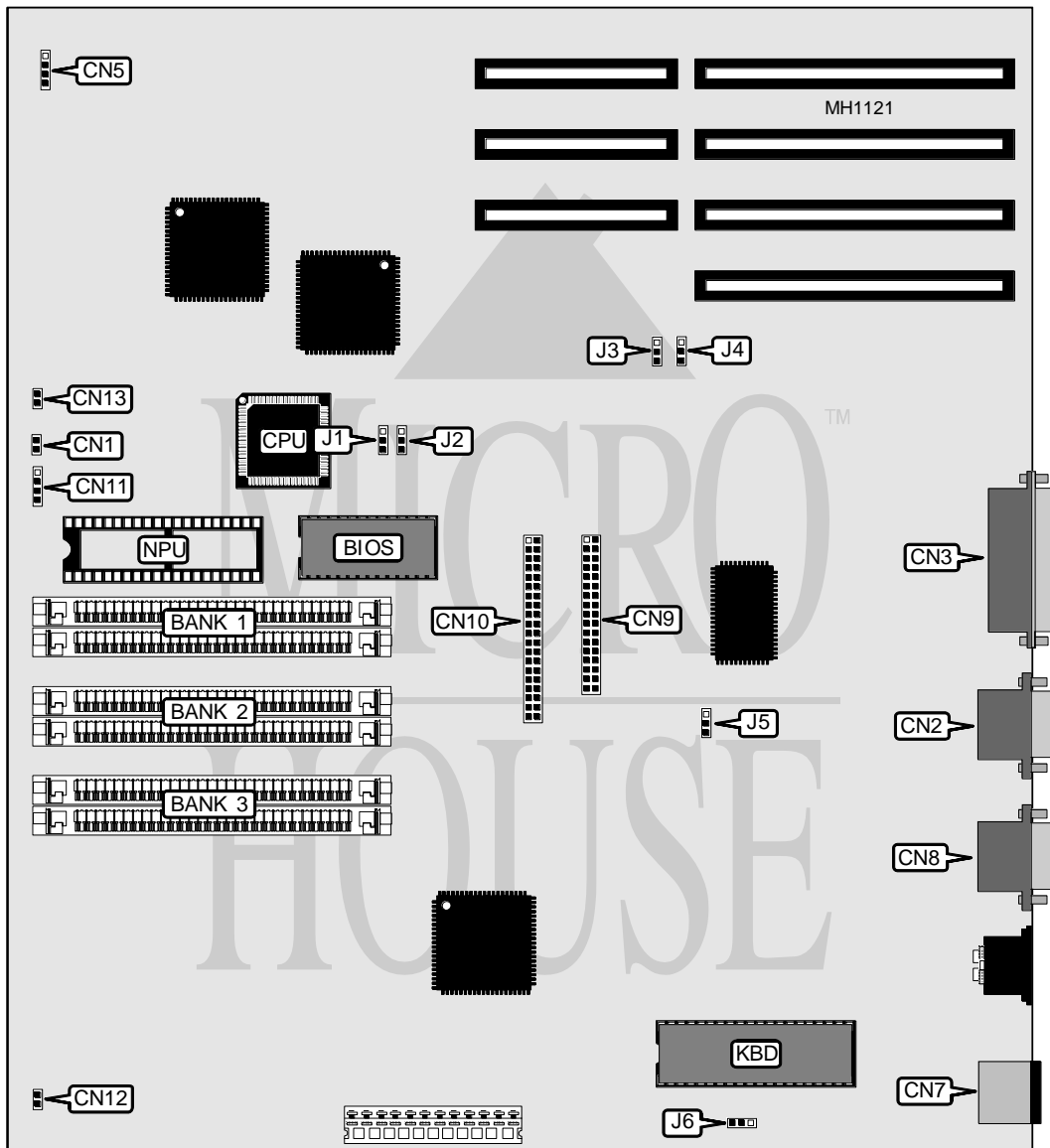


# EPSON, INC. EQUITY 286 PLUS

<b>Processor</b>	80286
<b>Processor Speed</b>	12MHz
<b>Chip Set</b>	VLSI TOPCAT
<b>Max. Onboard DRAM</b>	5MB
<b>Cache</b>	None
<b>BIOS</b>	AMI/Epson
<b>Dimensions</b>	304mm x 272mm
<b>I/O Options</b>	Bus mouse port, floppy drive interface, IDE interface, parallel port, serial port, VGA port
<b>NPU Options</b>	80287



Continued on next page . . .

# EPSON, INC.

## EQUITY 286 PLUS

... continued from previous page

CONNECTIONS			
Purpose	Location	Purpose	Location
External battery	CN1	IDE interface	CN9
Serial port	CN2	Floppy drive interface	CN10
Parallel port	CN3	Hard disk access LED	CN11
CPU speed/disk access LED	CN5	Power LED	CN12
Bus mouse port	CN7	Speaker	CN13
VGA adapter	CN8		

USER CONFIGURABLE SETTINGS		
Function	Jumper	Position
í NPU speed select 10MHz	J2	pins 2 & 3 closed
NPU speed select 8MHz	J2	pins 1 & 2 closed
í Bus mouse port enabled	J4	pins 1 & 2 closed
Bus mouse port disabled	J4	pins 2 & 3 closed
í Monitor type select color	J5	pins 1 & 2 closed
Monitor type select monochrome	J5	pins 2 & 3 closed
í Password enabled	J6	pins 2 & 3 closed
Password disabled	J6	pins 1 & 2 closed

DRAM CONFIGURATION			
Size	Bank 1	Bank 2	Bank 3
1MB	NONE	NONE	NONE
1.5MB	(2) 256K x 9	NONE	NONE
2MB	(2) 256K x 9	(2) 256K x 9	NONE
3MB	(2) 1M x 9	(2) 256K x 9	(2) 256K x 9
5MB	(2) 1M x 9	(2) 256K x 9	(2) 256K x 9

VIDEO CONFIGURATION		
Function	J1	J3
Disabled	pins 2 & 3 closed	pins 2 & 3 closed
Enabled	pins 1 & 2 closed	pins 1 & 2 closed