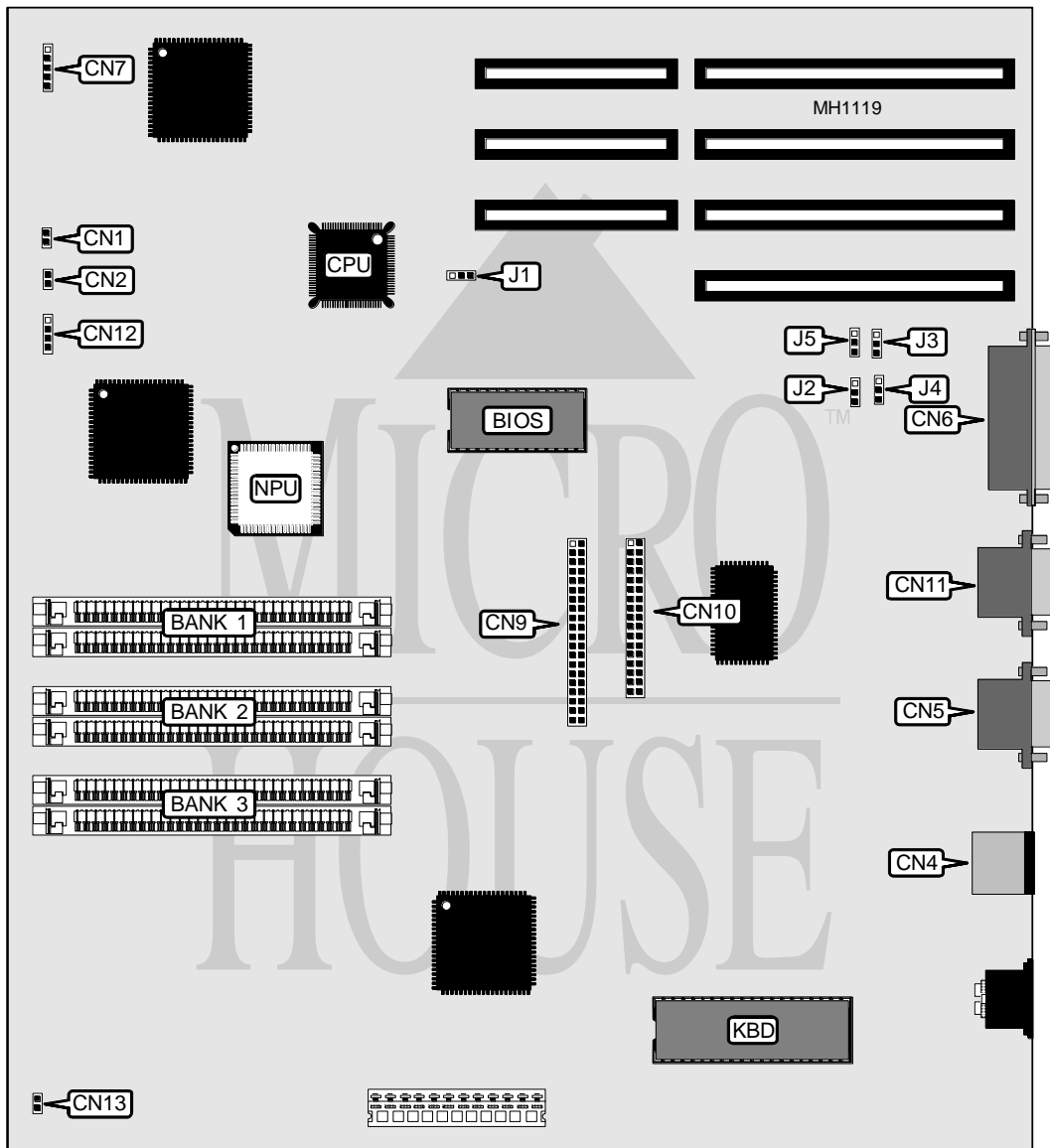


EPSON, INC.

EQUITY 386SX/16 PLUS AND EQUITY 320SX PLUS

Processor	80386SX
Processor Speed	16/20MHz
Chip Set	VLSI TOPCAT
Max. Onboard DRAM	24MB
Cache	None
BIOS	AMI/Epson
Dimensions	304mm x 272mm
I/O Options	Floppy drive interface, IDE interface, parallel port, serial port, VGA port
NPU Options	80387SX



Continued on next page . . .

EPSON, INC.

EQUITY 386SX/16 PLUS AND EQUITY 320SX PLUS

... continued from previous page

CONNECTIONS			
Purpose	Location	Purpose	Location
Battery connector	CN1	IDE interface	CN9
Speaker	CN2	Floppy drive interface	CN10
Keyboard/mouse connector	CN4	Serial port (COM1)	CN11
VGA connector	CN5	HDD access LED	CN12
Parallel port	CN6	Power LED	CN13
CPU/Power LED	CN7		

USER CONFIGURABLE SETTINGS		
Function	Jumper	Position
í Password enabled	J2	pins 2 & 3 closed
Password disabled	J2	pins 2 & 3 closed
í Monitor type select color	J3	pins 1 & 2 closed
Monitor type select monochrome	J3	pins 2 & 3 closed
í Mouse interface enabled	J4	pins 1 & 2 closed
Mouse interface disabled	J4	pins 2 & 3 closed

DRAM CONFIGURATION			
Size	Bank 1	Bank 2	Bank 3
3MB	(2) 256K x 9	(2) 256K x 9	NONE
4MB	(2) 1M x 9	NONE	NONE
5MB	(2) 1M x 9	(2) 256K x 9	(2) 256K x 9
6MB	(2) 1M x 9	(2) 1M x 9	NONE
8MB	(2) 1M x 9	(2) 1M x 9	(2) 1M x 9
10MB	(2) 4M x 9	NONE	NONE
11MB	(2) 4M x 9	(2) 256K x 9	(2) 256K x 9
12MB	(2) 1M x 9	(2) 4M x 9	NONE
18MB	(2) 4M x 9	(2) 4M x 9	(4) 1M x 9
20MB	(2) 1M x 9	(2) 4M x 9	(2) 4M x 9
24MB	(2) 4M x 9	(2) 4M x 9	(2) 4M x 9

Note: Board is supplied with 2MB factory installed.

VGA CONFIGURATION		
Setting	J1	J5
Enabled	pins 2 & 3 closed	pins 2 & 3 closed
Disabled	pins 1 & 2 closed	pins 1 & 2 closed