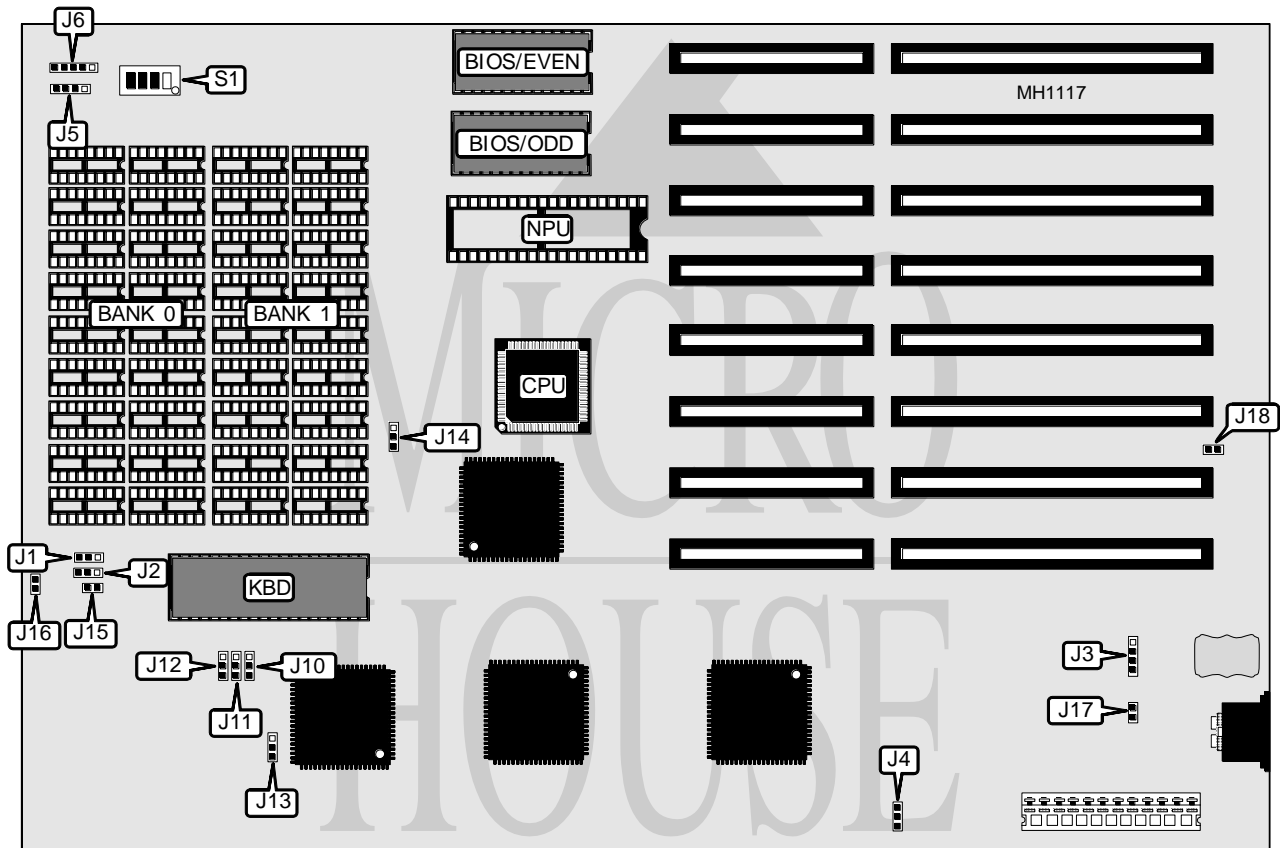


# SINGA

## 286/12

<b>Processor</b>	80286
<b>Processor Speed</b>	12/16/20MHz
<b>Chip Set</b>	C & T
<b>Max. Onboard DRAM</b>	1MB
<b>Cache</b>	None
<b>BIOS</b>	Phoenix
<b>Dimensions</b>	330mm x 218mm
<b>I/O Options</b>	None
<b>NPU Options</b>	80287



CONNECTIONS			
Purpose	Location	Purpose	Location
Turbo switch	J1	Power LED & keylock	J6
External battery	J3	Reset switch	J15
Speaker	J5	Turbo LED	J16

Continued on next page . . .

## SINGA

286/12

... continued from previous page

USER CONFIGURABLE SETTINGS		
Function	Jumper/Switch	Position
í CPU speed select 12MHz	J1	pins 1 & 2 closed
CPU speed select 8MHz	J1	pins 2 & 3 closed
í CPU Speed select switchable at turbo switch	J2	pins 1 & 2 closed
CPU Speed select switchable at keyboard	J2	pins 2 & 3 closed
í DMA clock speed select iOSC/2	J4	pins 2 & 3 closed
DMA clock speed select iOSC/1	J4	pins 1 & 2 closed
í DRAM access speed select 8MHz	J10	pins 1 & 2 closed
DRAM access speed select 12MHz	J10	pins 2 & 3 closed
í BIOS access speed select 8MHz	J11	pins 2 & 3 closed
BIOS access speed select 12MHz	J11	pins 1 & 2 closed
í DMA clock slow down enabled	J12	pins 1 & 2 closed
DMA clock slow down disabled	J12	pins 2 & 3 closed
í Keyboard controller speed select 8MHz	J13	pins 1 & 2 closed
Keyboard controller speed select 4MHz	J13	pins 2 & 3 closed
í NPU speed select 8MHz	J14	pins 2 & 3 closed
NPU speed select 4.77MHz	J14	pins 1 & 2 closed
í Battery type select internal	J17	Closed
Battery type select external	J17	Open
í Battery charge mode select normal	J18	Open
Battery charge mode select fast	J18	Closed
í Monitor type select color	S1/3	On
Monitor type select monochrome	S1/3	Off

DRAM CONFIGURATION		
Size	Bank 0	Bank 1
256KB	(18) 4164	(18) 4164
512KB	(18) 41256	NONE
640KB	(18) 41256	(18) 4164
1MB	(18) 41256	(18) 41256

DRAM SWITCH CONFIGURATION			
Size	S1/1	S1/2	S1/4
256KB	On	On	Off
512KB	Off	On	Off
640KB	On	Off	Off
1MB (512KB base)	Off	Off	Off
1MB (640KB base)	Off	Off	On