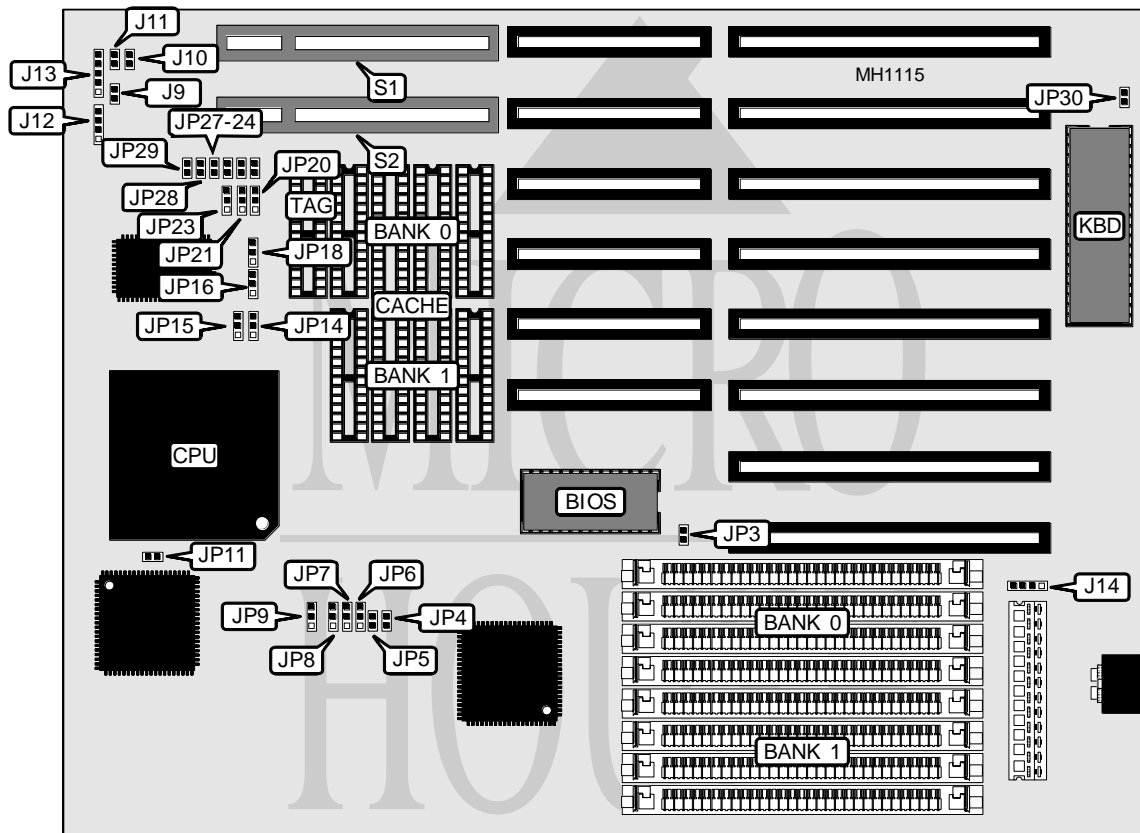


JOINDATA SYSTEMS, INC.

G 4 8 6 S V L

Processor 80486SX/80486DX
Processor Speed 20/25/33MHz
Chip Set Symphony
Max. Onboard DRAM 32MB
Cache 64/128/256KB
BIOS AMI
Dimensions 287mm x 218mm
I/O Options 32-bit VESA local bus slots (2)
NPU Options None



CONNECTIONS			
Purpose	Location	Purpose	Location
Reset switch	J9	Power LED & keylock	J13
Turbo LED	J10	External battery	J14
Turbo switch	J11	32-bit VESA local bus slots	S1 & S2
Speaker	J12		

Continued on next page . . .

JOINDATA SYSTEMS, INC.

G 4 8 6 S V L

... continued from previous page

USER CONFIGURABLE SETTINGS		
Function	Jumper	Position
í CMOS memory normal operation	JP3	Open
CMOS memory clear	JP3	Closed
Wait states select 0	JP24	Open
Wait state select 1	JP24	Closed
CPU speed select ≤ 33MHz	JP25	Open
CPU speed select > 33MHz	JP25	Closed
í Factory configured - do not alter	JP26	Closed
í Factory configured - do not alter	JP27	Closed
í Factory configured - do not alter	JP29	Closed
í Monitor type select color	JP30	Closed
Monitor type select monochrome	JP30	Open

DRAM CONFIGURATION		
Size	Bank 0	Bank 1
1MB	(4) 256K x 9	NONE
2MB	(4) 256K x 9	(4) 256K x 9
4MB	(4) 1M x 9	NONE
5MB	(4) 256K x 9	(4) 1M x 9
5MB	(4) 1M x 9	(4) 256K x 9
8MB	(4) 1M x 9	(4) 1M x 9
16MB	(4) 4M x 9	NONE
17MB	(4) 256K x 9	(4) 4M x 9
17MB	(4) 4M x 9	(4) 256K x 9
20MB	(4) 1M x 9	(4) 4M x 9
20MB	(4) 4M x 9	(4) 1M x 9
32MB	(4) 4M x 9	(4) 4M x 9

CACHE CONFIGURATION			
Size	Bank 0	Bank 1	TAG
64KB	(4) 8K x 8	(4) 8K x 8	(1) 8K x 8
128KB	(4) 32K x 8	NONE	(1) 32K x 8
256KB	(4) 32K x 8	(4) 32K x 8	(1) 32K x 8

CACHE JUMPER CONFIGURATION										
Size	JP7	JP8	JP14	JP15	JP16	JP18	JP20	JP21	JP23	JP28
64KB	Open	2 & 3	2 & 3	1 & 2	2 & 3	2 & 3	1 & 2	1 & 2	open	Open
128KB	2 & 3	1 & 2	1 & 2	2 & 3	2 & 3	2 & 3	2 & 3	2 & 3	2 & 3	Closed
256KB	1 & 2	1 & 2	1 & 2	2 & 3	1 & 2	1 & 2	1 & 2	1 & 2	1 & 2	Open

Note: Pins designated should be in the closed position.

Continued on next page . . .

JOINDATA SYSTEMS, INC.

G 4 8 6 S V L

... continued from previous page

CPU TYPE CONFIGURATION			
Type	JP5	JP6	JP11
80486SX	Open	pins 1 & 2 closed	Open
80486DX	Closed	pins 2 & 3 closed	Closed

CPU SPEED CONFIGURATION		
Speed	JP4	JP9
iOSC/2	Open	pins 2 & 3 closed
iOSC/1	Closed	pins 1 & 2 closed