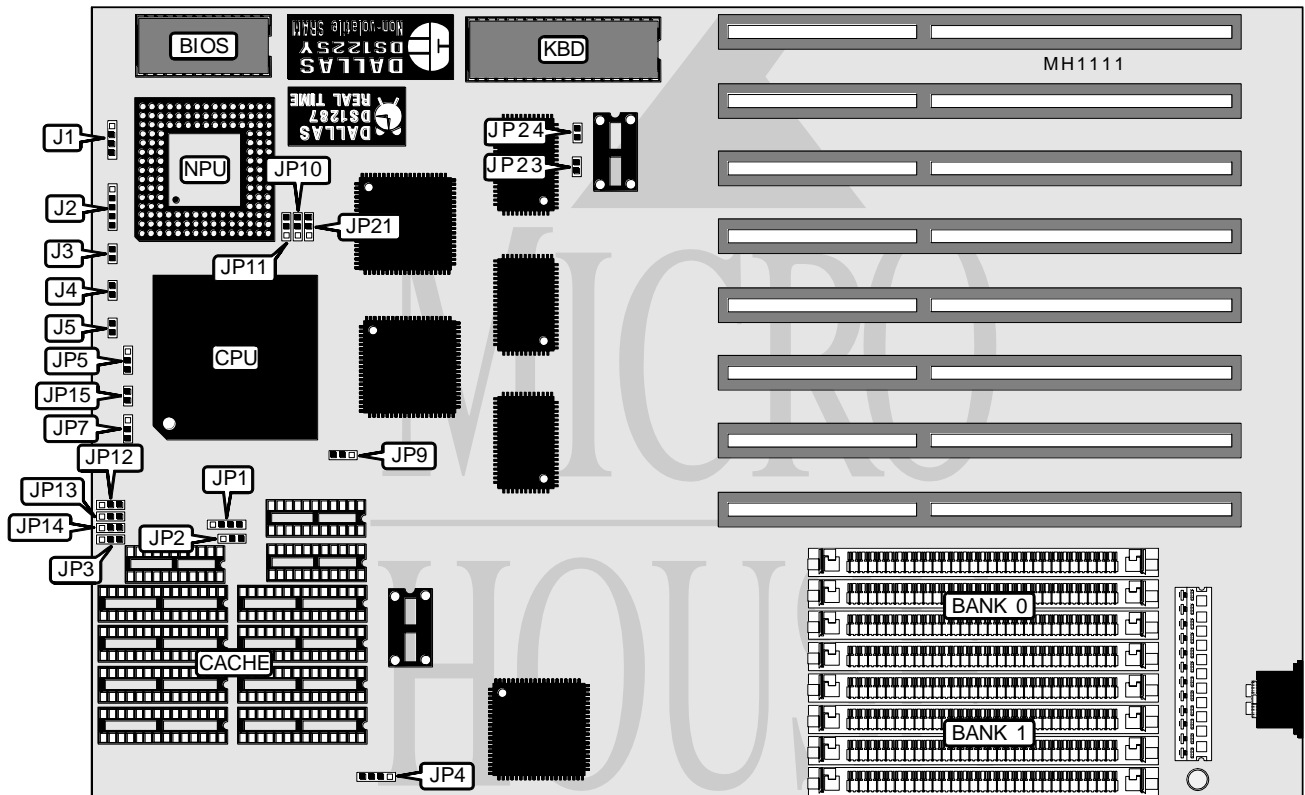


YOUNG MICRO SYTEMS, INC.

VEGA 486 EISA CACHE SERIES

Processor	80486SX/80487SX/80486DX
Processor Speed	20/25/33/50MHz
Chip Set	SIS
Max. Onboard DRAM	32MB
Cache	64/128/256KB
BIOS	AMI
Dimensions	330mm x 218mm
I/O Options	None
NPU Options	4167



CONNECTIONS			
Purpose	Location	Purpose	Location
Speaker	J1	Turbo LED	J4
Power LED & keylock	J2	Turbo switch	J5
Reset	J3		

Continued on next page . . .

YOUNG MICRO SYTEMS, INC.

VEGA 486 EISA CACHE SERIES

... continued from previous page

USER CONFIGURABLE SETTINGS		
Function	Jumper	Position
í Factory configured - do not alter	JP9	pins 1 & 2 closed
í Factory configured - do not alter	JP21	pins 1 & 2 closed
í Factory configured - do not alter	JP23	Closed
í Monitor type select color	JP24	Closed
Monitor type select monochrome	JP24	Open

DRAM CONFIGURATION		
Size	Bank 0	Bank 1
1MB	(4) 256K x 9	NONE
2MB	(4) 256K x 9	(4) 256K x 9
4MB	(4) 1M x 9	NONE
5MB	(4) 1M x 9	(4) 256K x 9
8MB	(4) 1M x 9	(4) 1M x 9
16MB	(4) 4M x 9	NONE
17MB	(4) 4M x 9	(4) 256K x 9
20MB	(4) 4M x 9	(4) 1M x 9
32MB	(4) 4M x 9	(4) 4M x 9

CACHE CONFIGURATION	
Size	Bank 0
64KB	(8) 8K x 8
128KB	(8) 32K x 8
256KB	(8) 32K x 8

CACHE JUMPER CONFIGURATION				
Size	JP3	JP12	JP13	JP14
64KB	pins 1 & 2 closed	pins 1 & 2 closed	pins 1 & 2 closed	pins 1 & 2 closed
128KB	pins 1 & 2 closed	pins 2 & 3 closed	pins 2 & 3 closed	pins 1 & 2 closed
256KB	pins 2 & 3 closed	pins 2 & 3 closed	pins 2 & 3 closed	pins 2 & 3 closed

CPU TYPE CONFIGURATION			
Type	JP5	JP7	JP15
80486SX	Open	pins 2 & 3 closed	Open
80487SX	pins 2 & 3 closed	pins 1 & 2 closed	Closed
80486DX	pins 1 & 2 closed	pins 1 & 2 closed	Closed