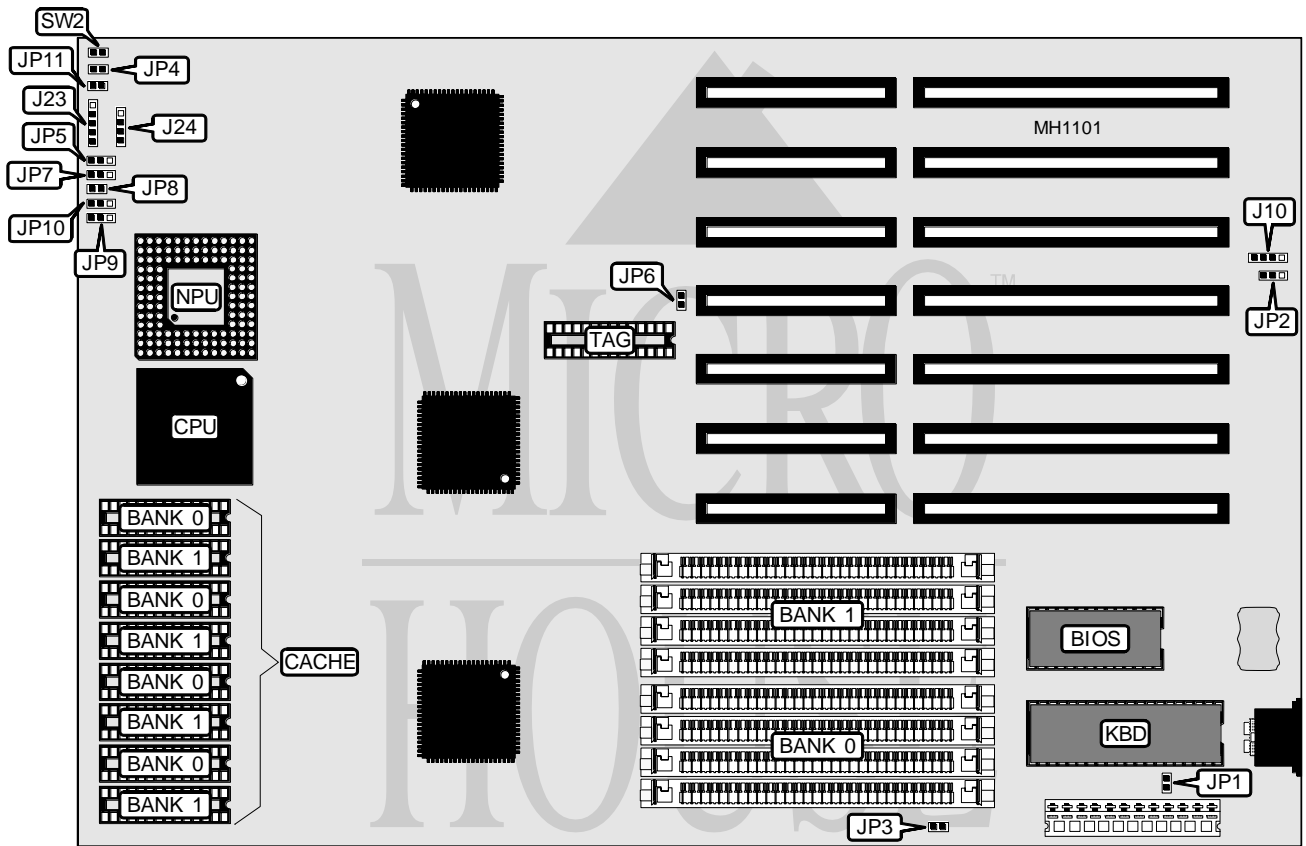


# J-MARK COMPUTER CORPORATION 386WB CACHE (VERSION II)

Processor	80386DX
Processor Speed	33/40MHz
Chip Set	OPTI
Max. Onboard DRAM	32MB
Cache	32/64/128/256KB
BIOS	AMI
Dimensions	330mm x 218mm
I/O Options	None
NPU Options	80387/3167



CONNECTIONS			
Purpose	Location	Purpose	Location
External battery	J10	Turbo LED	JP4
Power LED & keylock	J23	Reset switch	JP11
Speaker	J24	Turbo switch	SW2

Continued on next page . . .

## J-MARK COMPUTER CORPORATION

### 386WB CACHE (VERSION II)

... continued from previous page

#### USER CONFIGURABLE SETTINGS

Function	Jumper	Position
í Monitor type select color	JP1	Closed
Monitor type select monochrome	JP1	Open
í CMOS memory normal operation	JP2	pins 2 & 3 closed
CMOS memory clear	JP2	pins 1 & 2 closed
í Factory configured - do not alter	JP3	Closed

#### DRAM CONFIGURATION

Size	Bank 0	Bank 1
1MB	(4) 256K x 9	NONE
2MB	(4) 256K x 9	(4) 256K x 9
4MB	(4) 1M x 9	NONE
8MB	(4) 1M x 9	(4) 1M x 9
16MB	(4) 4M x 9	NONE
32MB	(4) 4M x 9	(4) 4M x 9

#### CACHE CONFIGURATION

Size	Bank 0	Bank 1	TAG
32KB	(4) 8K x 8	NONE	(1) 8K x 8
64KB	(4) 8K x 8	(4) 8K x 8	(1) 8K x 8
128KB	(4) 32K x 8	NONE	(1) 32K x 8
256KB	(4) 32K x 8	(4) 32K x 8	(1) 32K x 8

#### CACHE JUMPER CONFIGURATION

Size	JP5	JP6	JP7	JP8	JP9	JP10
32KB	1 & 2	Open	1 & 2	Open	1 & 2	2 & 3
64KB	2 & 3	Open	1 & 2	Open	1 & 2	1 & 2
128KB	2 & 3	Open	2 & 3	Closed	1 & 2	1 & 2
256KB	2 & 3	Closed	2 & 3	Closed	2 & 3	1 & 2

Note: Pins designated should be in the closed position.