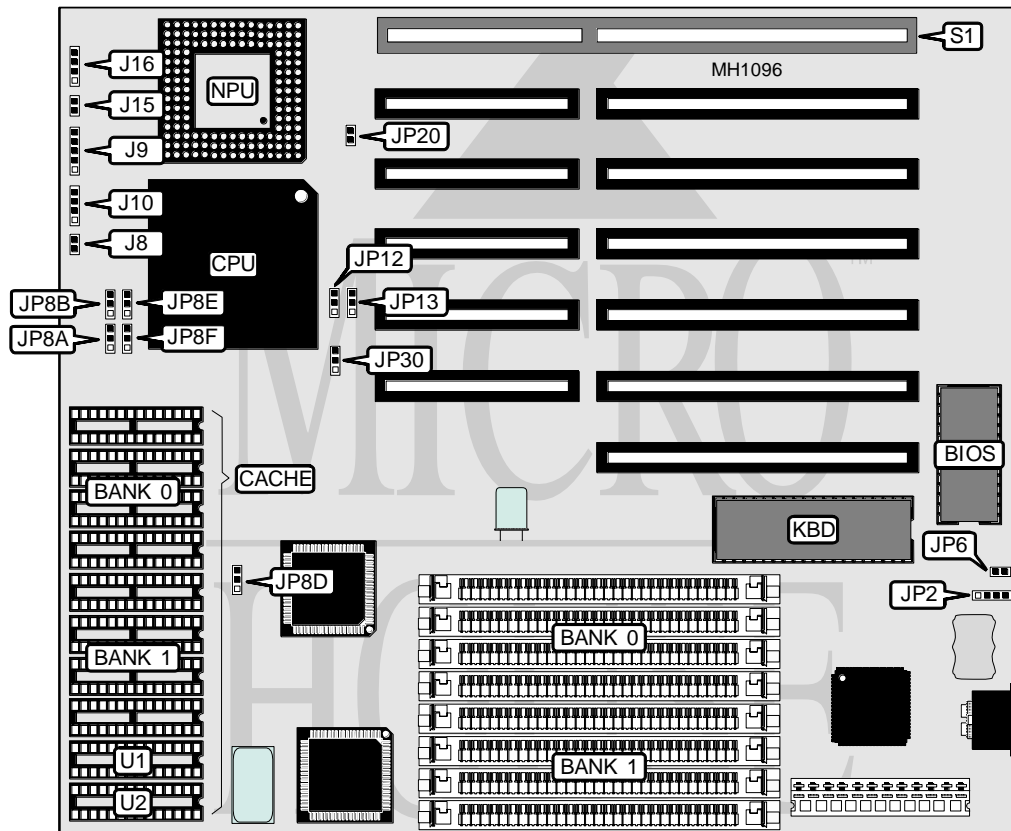


MICRO EXPRESS, INC. FOREX 486/50

Processor	80486SX/80487SX/80486DX/80486DX2
Processor Speed	25/33/50(internal)/50/66(internal)MHz
Chip Set	FOREX
Max. Onboard DRAM	32MB
Cache	64/128/256KB
BIOS	AMI
Dimensions	254mm x 218mm
I/O Options	32-bit local bus card slot
NPU Options	4167



CONNECTIONS			
Purpose	Location	Purpose	Location
External battery	J2	Turbo switch	J15
Reset switch	J8	Turbo LED	J16
Power LED & keylock	J9	32-bit local bus card	S1
Speaker	J10		

Continued on next page . . .

MICRO EXPRESS, INC.

FOREX 486/50

... continued from previous page

USER CONFIGURABLE SETTINGS

Function	Jumper	Position
í CMOS memory normal operation	JP6	Open
CMOS memory clear	JP6	Closed
í Local bus speed select < 33MHz	JP20	Open
Local bus speed select ≥ 33MHz	JP20	Closed

DRAM CONFIGURATION

Size	Bank 0	Bank 1
1MB	(4) 256K x 9	NONE
2MB	(4) 256K x 9	(4) 256K x 9
4MB	(4) 1M x 9	NONE
5MB	(4) 256K x 9	(4) 1M x 9
8MB	(4) 1M x 9	(4) 1M x 9
16MB	(4) 4M x 9	NONE
20MB	(4) 1M x 9	(4) 4M x 9
32MB	(4) 4M x 9	(4) 4M x 9

CACHE CONFIGURATION

Size	Bank 0	Bank 1	TAG (U1)	TAG (U2)
64KB	(4) 8K x 8	(4) 8K x 8	(1) 8K x 8	NONE
128KB	(4) 32K x 8	NONE	(1) 8K x 8	NONE
256KB	(4) 32K x 8	(4) 32K x 8	(1) 8K x 8	(1) 8K x 8

SRAM JUMPER CONFIGURATION

Size	JP8A	JP8B	JP8D	JP8E	JP8F
64KB	2 & 3	2 & 3	2 & 3	2 & 3	2 & 3
128KB	1 & 2	1 & 2	1 & 2	1 & 2	2 & 3
256KB	2 & 3	1 & 2	2 & 3	1 & 2	1 & 2

Note: Pins designated should be in the closed position.

CPU TYPE CONFIGURATION

Type	JP12	JP13	JP30
80486SX	pins 2 & 3 closed	pins 2 & 3 closed	pins 2 & 3 closed
80487SX	pins 1 & 2 closed	pins 1 & 2 closed	pins 2 & 3 closed
80486DX	pins 1 & 2 closed	pins 1 & 2 closed	pins 1 & 2 closed
80486DX2	pins 1 & 2 closed	pins 1 & 2 closed	pins 1 & 2 closed