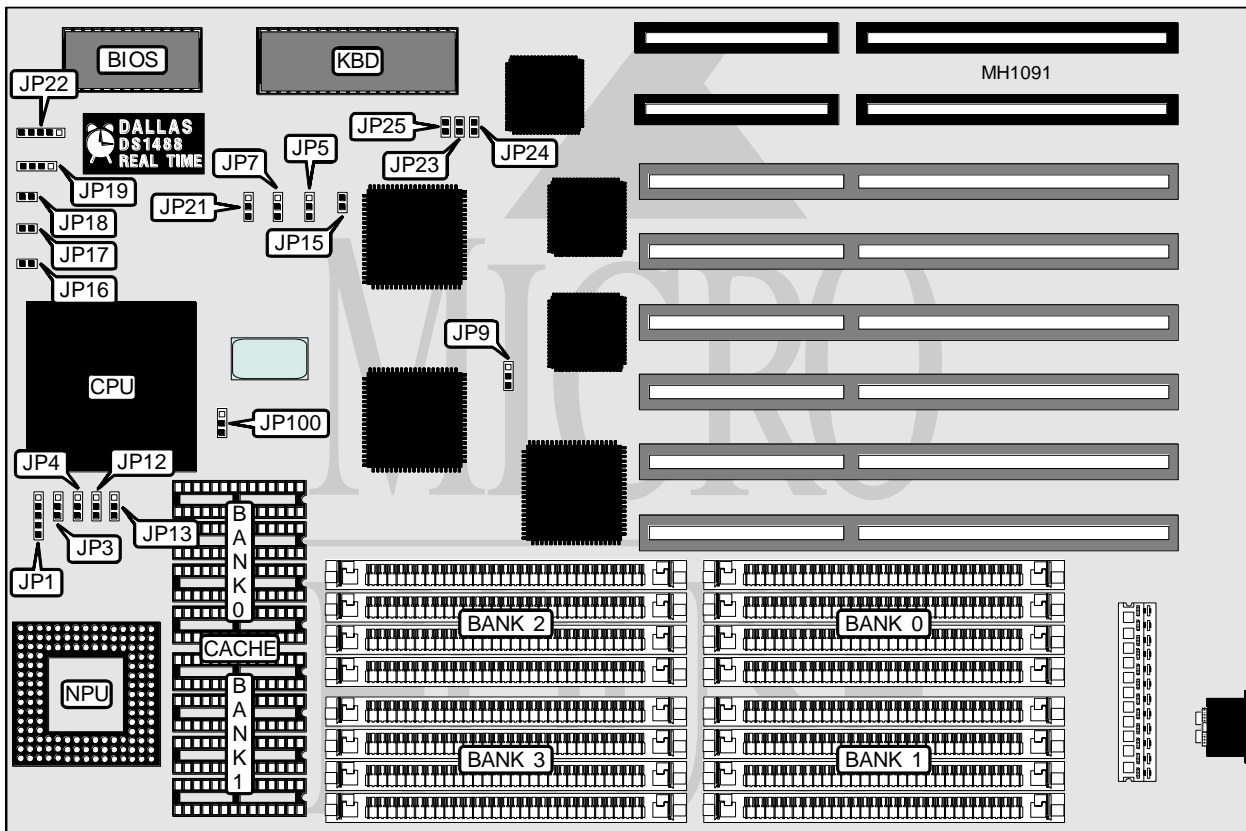


# LION COMPUTERS, INC.

## NICE - EISA 2

<b>Processor</b>	80486SX/80487SX/80486DX/ODP486SX/80486DX2
<b>Processor Speed</b>	16/20/25/33/40/50(internal)/50/66(internal)MHz
<b>Chip Set</b>	SIS
<b>Max. Onboard DRAM</b>	256MB
<b>Cache</b>	128/256/512KB
<b>BIOS</b>	AMI
<b>Dimensions</b>	330mm x 218mm
<b>I/O Options</b>	None
<b>NPU Options</b>	4167



CONNECTIONS			
Purpose	Location	Purpose	Location
Turbo LED	JP16	Speaker	JP19
Turbo switch	JP17	Power LED & keylock	JP22
Reset switch	JP18		

Continued on next page . . .

# LION COMPUTERS, INC.

## NICE - EISA 2

... continued from previous page

USER CONFIGURABLE SETTINGS		
Function	Jumper	Position
í Factory configured - do not alter	JP9	pins 1 & 2 closed
í Factory configured - do not alter	JP21	pins 1 & 2 closed
í Factory configured - do not alter	JP23	Closed
í Monitor type select monochrome	JP24	Closed
Monitor type select color	JP24	Open
í Password check normal operation	JP25	Open
Password clear	JP25	Closed
í Factory configured - do not alter	JP100	pins 2 & 3 closed

DRAM CONFIGURATION				
Size	Bank 0	Bank 1	Bank 2	Bank 3
1MB	(4) 256K x 9	NONE	NONE	NONE
2MB	(4) 256K x 9	(4) 256K x 9	NONE	NONE
4MB	(4) 256K x 9	(4) 256K x 9	(4) 256K x 9	(4) 256K x 9
4MB	(4) 1M x 9	NONE	NONE	NONE
6MB	(4) 256K x 9	(4) 256K x 9	(4) 1M x 9	NONE
8MB	(4) 1M x 9	(4) 1M x 9	NONE	NONE
10MB	(4) 256K x 9	(4) 256K x 9	(4) 1M x 9	(4) 1M x 9
12MB	(4) 1M x 9	(4) 1M x 9	(4) 1M x 9	NONE
16MB	(4) 1M x 9	(4) 1M x 9	(4) 1M x 9	(4) 1M x 9
16MB	(4) 4M x 9	NONE	NONE	NONE
18MB	(4) 256K x 9	(4) 256K x 9	(4) 4M x 9	NONE
20MB	(4) 1M x 9	(4) 4M x 9	NONE	NONE
24MB	(4) 1M x 9	(4) 1M x 9	(4) 4M x 9	NONE
32MB	(4) 4M x 9	(4) 4M x 9	NONE	NONE
36MB	(4) 1M x 9	(4) 4M x 9	(4) 4M x 9	NONE
40MB	(4) 1M x 9	(4) 1M x 9	(4) 4M x 9	(4) 4M x 9
48MB	(4) 4M x 9	(4) 4M x 9	(4) 4M x 9	NONE
64MB	(4) 4M x 9	(4) 4M x 9	(4) 4M x 9	(4) 4M x 9
64MB	(4) 16M x 9	NONE	NONE	NONE
128MB	(4) 16M x 9	(4) 16M x 9	NONE	NONE
192MB	(4) 16M x 9	(4) 16M x 9	(4) 16M x 9	NONE
256MB	(4) 16M x 9	(4) 16M x 9	(4) 16M x 9	(4) 16M x 9

CACHE CONFIGURATION		
Size	Bank 0	Bank 1
128KB	(4) 32K x 8	NONE
256KB	(4) 32K x 8	(4) 32K x 8
512KB	(4) 128K x 8	NONE

Continued on next page ...

# LION COMPUTERS, INC.

## NICE - EISA 2

... continued from previous page

CACHE JUMPER CONFIGURATION					
Size	JP1	JP3	JP4	JP12	JP13
128KB	1 & 2	1 & 2	1 & 2	1 & 2	1 & 2
256KB	4 & 5	2 & 3	1 & 2	2 & 3	1 & 2
512KB	1 & 2	2 & 3	2 & 3	2 & 3	2 & 3

Note: Pins designated should be in the closed position.

CPU TYPE CONFIGURATION			
Type	JP5	JP7	JP15
80486SX	Open	pins 2 & 3 closed	Open
ODP486SX	pins 2 & 3 closed	pins 1 & 2 closed	Closed
80487SX	pins 2 & 3 closed	pins 1 & 2 closed	Closed
80486DX	pins 1 & 2 closed	pins 1 & 2 closed	Closed
80486DX2	pins 1 & 2 closed	pins 1 & 2 closed	Closed