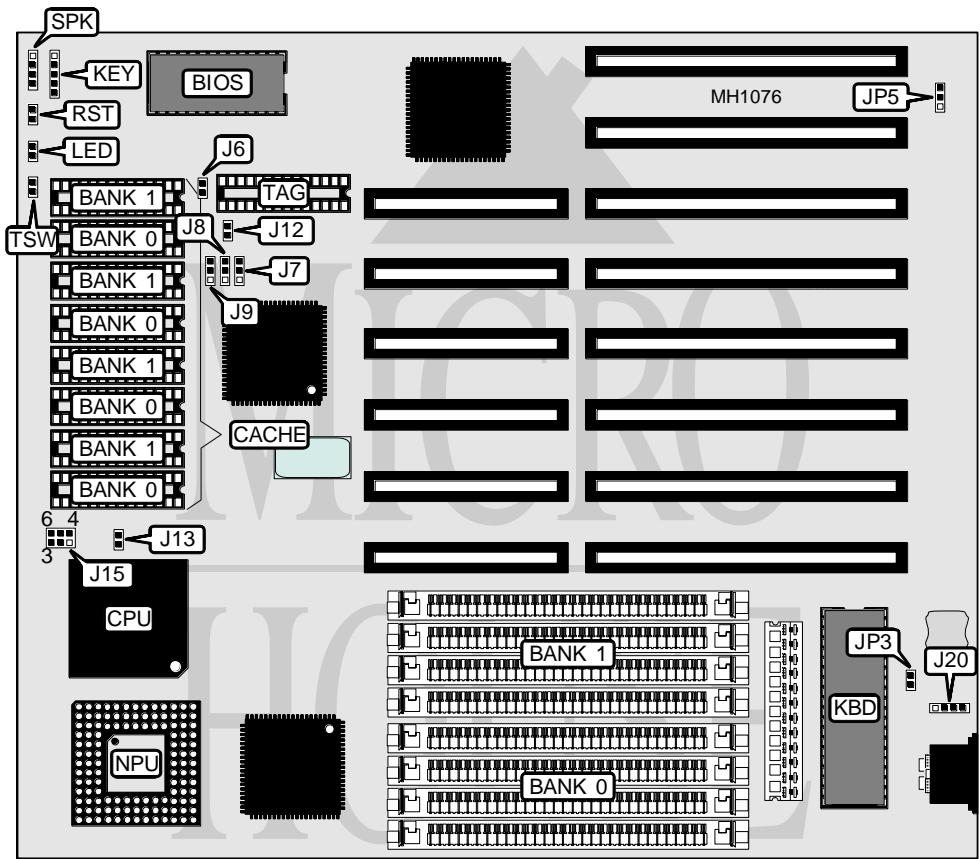


J-MARK COMPUTER CORPORATION

JET-386E CACHE

Processor 80386DX
Processor Speed 33/40MHz
Chip Set ETEQ
Max. Onboard DRAM 32MB
Cache 64/128/256KB
BIOS AMI/Award
Dimensions 254mm x 220mm
I/O Options None
NPU Options 80387/3167



CONNECTIONS			
Purpose	Location	Purpose	Location
External battery	J20	Reset switch	RST
Power LED & keylock	KEY	Speaker	SPK
Turbo LED	LED	Turbo switch	TSW

Continued on next page . . .

J-MARK COMPUTER CORPORATION

JET-386E CACHE

... continued from previous page

USER CONFIGURABLE SETTINGS		
Function	Jumper	Position
í Monitor type select color	JP3	Closed
Monitor type select monochrome	JP3	Open
í CMOS memory normal operation	JP5	pins 1 & 2 closed
CMOS memory clear	JP5	pins 2 & 3 closed

DRAM CONFIGURATION		
Size	Bank 0	Bank 1
1MB	(4) 256K x 9	NONE
2MB	(4) 256K x 9	(4) 256K x 9
4MB	(4) 1M x 9	NONE
8MB	(4) 1M x 9	(4) 1M x 9
16MB	(4) 4M x 9	NONE
32MB	(4) 4M x 9	(4) 4M x 9

CACHE CONFIGURATION			
Size	Bank 0	Bank 1	TAG
64KB	(4) 8K x 8	(4) 8K x 8	(1) 8K x 8
128KB	(4) 32K x 8	NONE	(1) 8K x 8
256KB	(4) 32K x 8	(4) 32K x 8	(1) 32K x 8

CACHE JUMPER CONFIGURATION							
Size	J6	J7	J8	J9	J12	J13	J15
64KB	Open	1 & 2	1 & 2	2 & 3	Open	Open	1 & 2
128KB	Closed	1 & 2	2 & 3	2 & 3	Open	Closed	4 & 5
256KB	Closed	2 & 3	2 & 3	2 & 3	Closed	Closed	5 & 6

Note: Pins designated should be in the closed position.