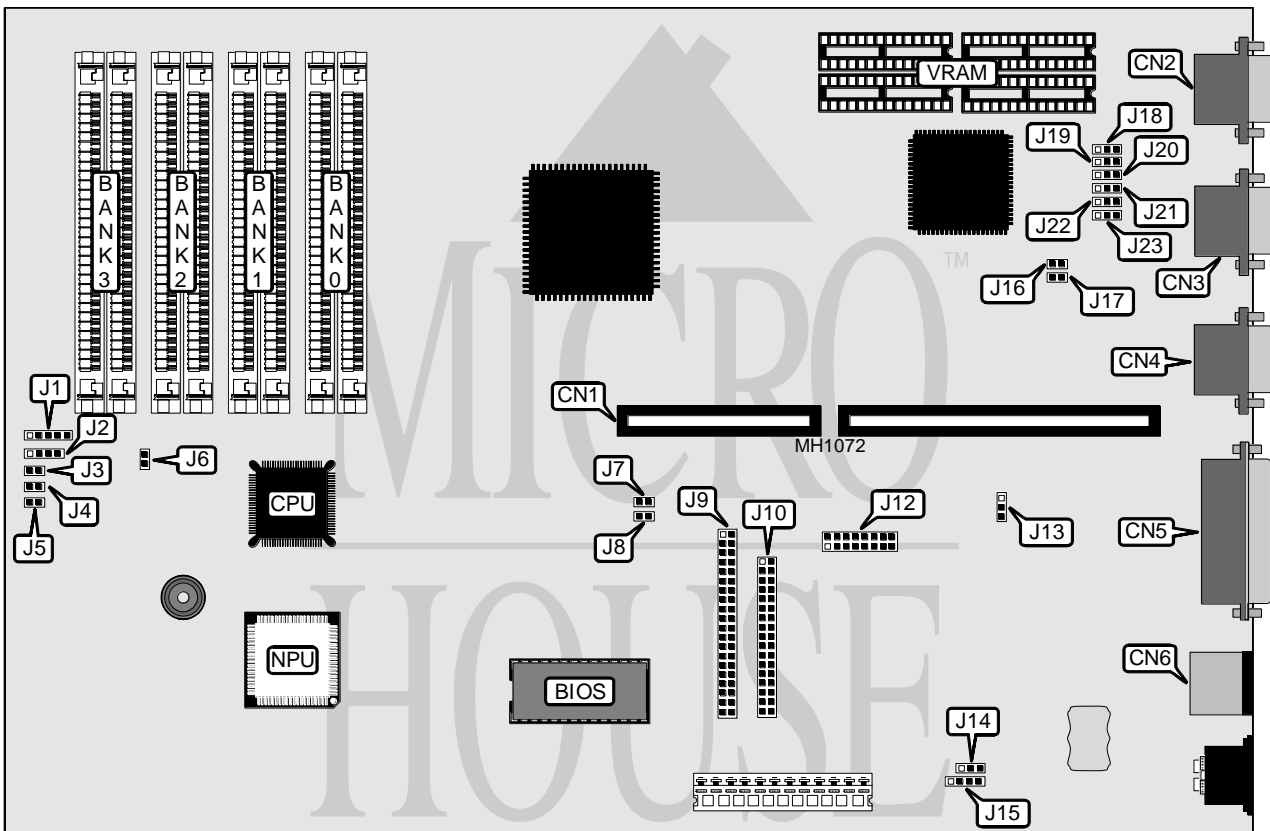


COMMODORE BUSINESS MACHINES, INC.

3 8 6 S X

Processor	80386SX
Processor Speed	16/20/25MHz
Chip Set	Unknown
Max. Onboard DRAM	16MB
Cache	None
BIOS	Comodore
Dimensions	254mm x 218mm
I/O Options	16-bit riser card slot, bus mouse port, floppy drive interface, game port, IDE interface, parallel port, serial ports (2), VGA interface
NPU Options	80387SX



CONNECTIONS			
Purpose	Location	Purpose	Location
16-bit riser card	CN1	Turbo LED	J3
VGA port	CN2	Turbo switch	J4
Serial port 2	CN3	Reset switch	J5
Serial port 1	CN4	IDE interface	J9
Parallel port	CN5	Floppy drive interface	J10
Bus mouse port	CN6	Game port	J12
Power LED & keylock	J1	External battery	J15
IDE interface LED	J2		

Continued on next page . . .

COMMODORE BUSINESS MACHINES, INC.

386SX

... continued from previous page

USER CONFIGURABLE SETTINGS		
Function	Jumper	Position
í Monitor type select color	J6	Closed
Monitor type select monochrome	J6	Open
í IDE interface enabled	J7 and J8	Closed
IDE interface disabled	J7 and J8	Open
í Battery type select internal	J14	pins 1 & 2 closed
Battery type select external	J14	pins 2 & 3 closed
í VGA port wait states select one	J16	Open
VGA port wait states select zero	J16	Closed
í VGA port enabled	J17	Closed
VGA port disabled	J17	Open
í Floppy interface enabled	J23	pins 1 & 2 closed
Floppy interface disabled	J23	pins 2 & 3 closed

DRAM CONFIGURATION				
Size	Bank 0	Bank 1	Bank 2	Bank 3
1MB	(2) 256K x 9	(2) 256K x 9	NONE	NONE
1.5MB	(2) 256K x 9	(2) 256K x 9	(2) 256K x 9	NONE
2MB	(2) 256K x 9	(2) 256K x 9	(2) 256K x 9	(2) 256K x 9
2MB	(2) 1M x 9	NONE	NONE	NONE
3MB	(2) 256K x 9	(2) 256K x 9	(2) 1M x 9	NONE
4MB	(2) 1M x 9	(2) 1M x 9	NONE	NONE
5MB	(2) 256K x 9	(2) 256K x 9	(2) 1M x 9	(2) 1M x 9
6MB	(2) 1M x 9	(2) 1M x 9	(2) 1M x 9	NONE
8MB	(2) 1M x 9	(2) 1M x 9	(2) 1M x 9	(2) 1M x 9
12MB	(2) 1M x 9	(2) 1M x 9	(2) 4M x 9	NONE
16MB	(2) 4M x 9	(2) 4M x 9	NONE	NONE

PARALLEL PORT CONFIGURATION				
Parallel port	IRQ	J13	J18	J19
LPT1	5	pins 3 & 4 closed	Open	Closed
LPT1	7	pins 1 & 2 closed	Open	Closed
LPT2	5	pins 3 & 4 closed	Closed	Closed
LPT2	7	pins 1 & 2 closed	Closed	Closed
LPT3	5	pins 3 & 4 closed	Closed	Open
LPT3	7	pins 1 & 2 closed	Closed	Open
Disabled	N/A	N/A	Open	Open

SERIAL PORT CONFIGURATION				
UART1	UART2	J20	J21	J22
COM1	COM2	pins 1 & 2 closed	pins 1 & 2 closed	pins 1 & 2 closed
COM1	Disabled	pins 1 & 2 closed	pins 2 & 3 closed	pins 1 & 2 closed
COM2	COM1	pins 1 & 2 closed	pins 1 & 2 closed	pins 2 & 3 closed
Disabled	COM1	pins 2 & 3 closed	pins 1 & 2 closed	pins 2 & 3 closed
Disabled	COM2	pins 2 & 3 closed	pins 1 & 2 closed	pins 1 & 2 closed
COM2	Disabled	pins 1 & 2 closed	pins 2 & 3 closed	pins 2 & 3 closed
Disabled	Disabled	pins 2 & 3 closed	pins 2 & 3 closed	N/A