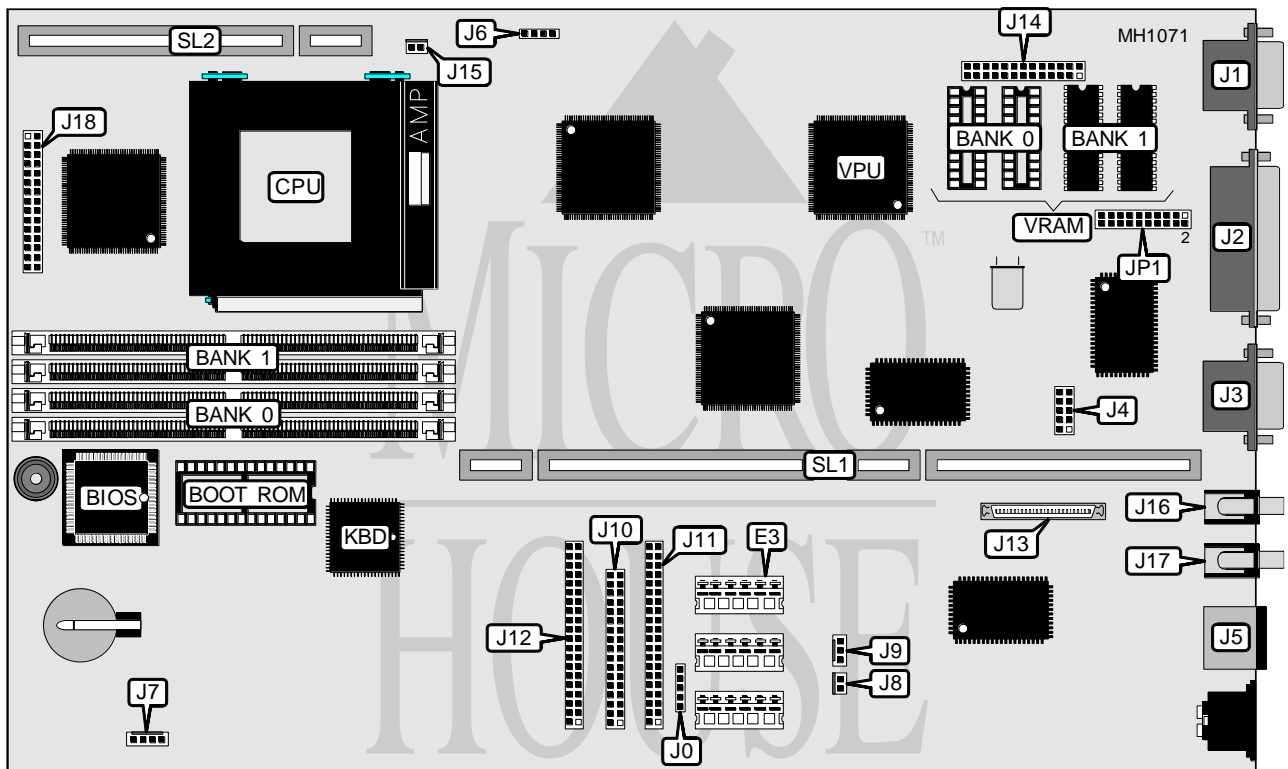


## ICL

ERGOPRO E450, ERGOPRO E650, ERGOPRO S450, ERGOPRO S650,  
ERGOPRO X650

<b>Processor</b>	Pentium
<b>Processor Speed</b>	75/90/100MHz
<b>Chip Set</b>	OPTI
<b>Max. Onboard DRAM</b>	128MB
<b>Cache</b>	256KB (on daughterboard)
<b>BIOS</b>	ICL
<b>Dimensions</b>	330mm x 200mm
<b>I/O Options</b>	PS/2 mouse port, parallel port, serial ports (2), VGA port, VGA feature connector, network adapter, floppy drive interface, IDE interfaces (2), proprietary riser card slot, sound in, sound out
<b>NPU Options</b>	None



Continued on next page...

## ICL

ERGOPRO E450, ERGOPRO E650, ERGOPRO S450, ERGOPRO S650,  
ERGOPRO X650

... continued from previous page

CONNECTIONS			
Purpose	Location	Purpose	Location
3.3V power connector	E3	Floppy drive interface	J10
Keyboard and mouse PTC	J0	IDE interface (primary)	J11
VGA port	J1	IDE interface (secondary)	J12
Parallel port	J2	Network adapter	J13
Serial port 1	J3	VGA feature connector	J14
Serial port 2	J4	CPU fan	J15
PS/2 mouse port	J5	Microphone in	J16
Hard drive LED	J6	Speaker out	J17
Front panel LEDs	J7	Reset switch	JP1 pins 1 & 2
Chassis fan power	J8	Proprietary riser card slot	SL1
Power switch	J9	Cache expansion slot	SL2

USER CONFIGURABLE SETTINGS		
Function	Jumper	Position
í Factory configured - do not alter	J18	N/A
í Factory configured - do not alter	JP1 pins 9 & 10	Closed
í Password disabled	JP1 pins 15 & 16	Open
Password enabled	JP1 pins 15 & 16	Closed
í Factory configured - do not alter	JP1 pins 17 & 18	Closed
í BIOS write protect enabled	JP1 pins 19 & 20	Open
BIOS write protect disabled	JP1 pins 19 & 20	Closed

DRAM CONFIGURATION		
Size	Bank 0	Bank 1
8MB	(2) 1M x 36	NONE
16MB	(2) 1M x 36	(2) 1M x 36
16MB	(2) 2M x 36	NONE
24MB	(2) 1M x 36	(2) 2M x 36
32MB	(2) 2M x 36	(2) 2M x 36
32MB	(2) 4M x 36	NONE
40MB	(2) 1M x 36	(2) 4M x 36
48MB	(2) 2M x 36	(2) 4M x 36
64MB	(2) 4M x 36	(2) 4M x 36
72MB	(2) 1M x 36	(2) 8M x 36
80MB	(2) 2M x 36	(2) 8M x 36
96MB	(2) 4M x 36	(2) 8M x 36
128MB	(2) 8M x 36	(2) 8M x 36

CACHE CONFIGURATION
Note: Cache is installed in SL2. It is a card and the size is not configurable.

Continued on next page. . .

## ICL

ERGOPRO E450, ERGOPRO E650, ERGOPRO S450, ERGOPRO S650,  
ERGOPRO X650

... continued from previous page

CPU SPEED CONFIGURATION			
Speed	JP1 pins 3 & 4	JP1 pins 5 & 6	JP1 pins 7 & 8
75MHz	Closed	Closed	Open
90MHz	Closed	Open	Closed
100MHz	Open	Closed	Open

CMOS MODE CONFIGURATION	
Mode	JP1
í Normal	pins 11 & 12 closed
Clear	pins 13 & 14 closed

VRAM CONFIGURATION		
Size	Bank 0	Bank 1
1MB	(2) 1024K x 4	NONE
2MB	(2) 1024K x 4	(2) 1024K x 4