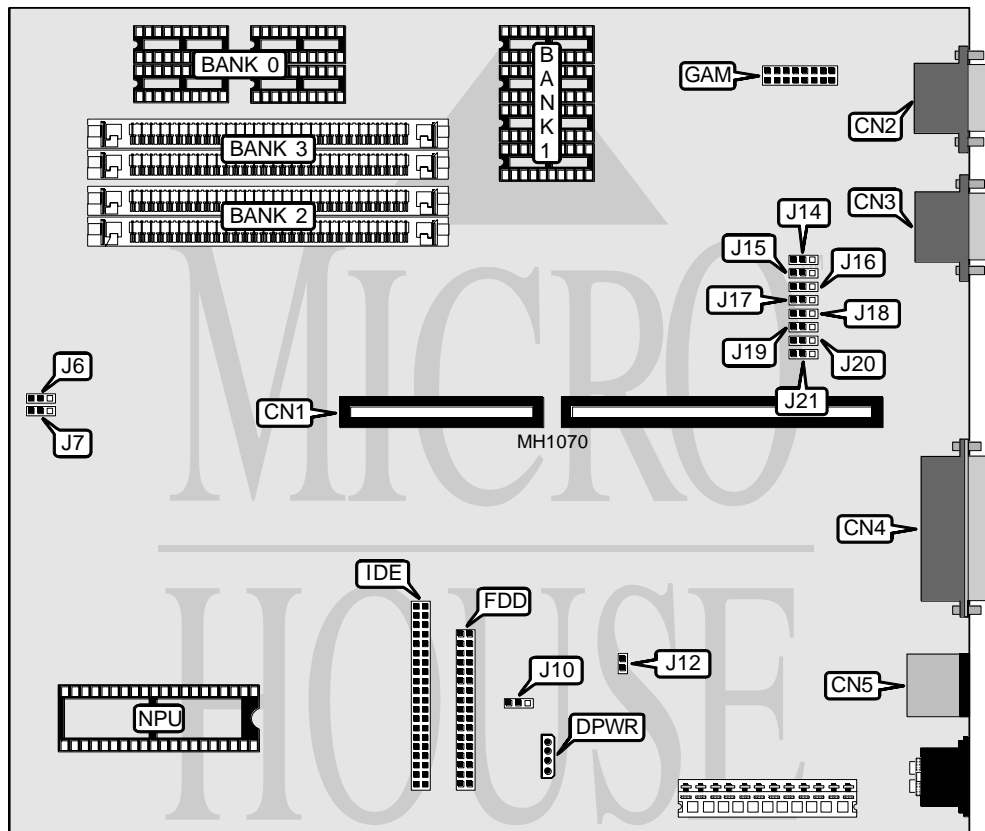


COMMODORE BUSINESS MACHINES, INC.

286 SYSTEM (PART #368987-01 REV B)

Processor	80286
Processor Speed	8/10MHz
Chip Set	Unidentified
Max. Onboard DRAM	16MB
Cache	None
BIOS	Commodore
Dimensions	254mm x 218mm
I/O Options	16-bit riser card slot, bus mouse port, floppy interface, game port, IDE interface, parallel port, serial ports (2)
NPU Options	80287



CONNECTIONS			
Purpose	Location	Purpose	Location
16-bit riser card	CN1	Drive power	DPWR
Serial port 1	CN2	Floppy drive interface	FDD
Serial port 2	CN3	Game port	GAM
Parallel port	CN4	IDE drive interface	IDE
Bus mouse port	CN5		

Continued on next page . . .

COMMODORE BUSINESS MACHINES, INC.

286 SYSTEM (PART #368987-01 REV B)

... continued from previous page

USER CONFIGURABLE SETTINGS		
Function	Jumper	Position
í Battery type select internal	J10	pins 2 & 3 closed
Battery type select external	J10	pins 1 & 2 closed
í Monitor type select monochrome	J12	Closed
Monitor type select color	J12	Open
í IDE interface enabled	J14	pins 1 & 2 closed
IDE interface disabled	J14	pins 2 & 3 closed
í Floppy drive interface enabled	J15	pins 1 & 2 closed
Floppy drive interface disabled	J15	pins 2 & 3 closed

DRAM CONFIGURATION				
Size	Bank 0	Bank 1	Bank 2	Bank 3
512KB	(4) 44256	NONE	NONE	NONE
1MB	(4) 44256	(4) 44256	NONE	NONE
1.5MB	(4) 44256	(4) 44256	(2) 256K x 9	NONE
2MB	(4) 44256	(4) 44256	(2) 256K x 9	(2) 256K x 9
2MB	(4) 441000	NONE	NONE	NONE
3MB	(4) 44256	(4) 44256	(2) 1M x 9	NONE
4MB	NONE	NONE	(2) 1M x 9	(2) 1M x 9
4MB	(4) 441000	(4) 441000	NONE	NONE
5MB	(4) 44256	(4) 44256	(2) 1M x 9	(2) 1M x 9
8MB	(4) 444000	NONE	NONE	NONE
16MB	(4) 444000	(4) 444000	NONE	NONE
16MB	NONE	NONE	(2) 4M x 9	(2) 4M x 9

DRAM JUMPER CONFIGURATION		
Size	J6	J7
512KB	pins 2 & 3 closed	pins 2 & 3 closed
1MB	pins 2 & 3 closed	pins 2 & 3 closed
1.5MB	pins 2 & 3 closed	pins 2 & 3 closed
2MB	pins 2 & 3 closed	pins 2 & 3 closed
2MB	pins 2 & 3 closed	pins 2 & 3 closed
3MB	pins 2 & 3 closed	pins 2 & 3 closed
4MB	pins 1 & 2 closed	pins 1 & 2 closed
4MB	pins 2 & 3 closed	pins 2 & 3 closed
5MB	pins 2 & 3 closed	pins 2 & 3 closed
8MB	pins 2 & 3 closed	pins 2 & 3 closed
16MB	pins 2 & 3 closed	pins 2 & 3 closed
16MB	pins 1 & 2 closed	pins 1 & 2 closed

Continued on next page ...

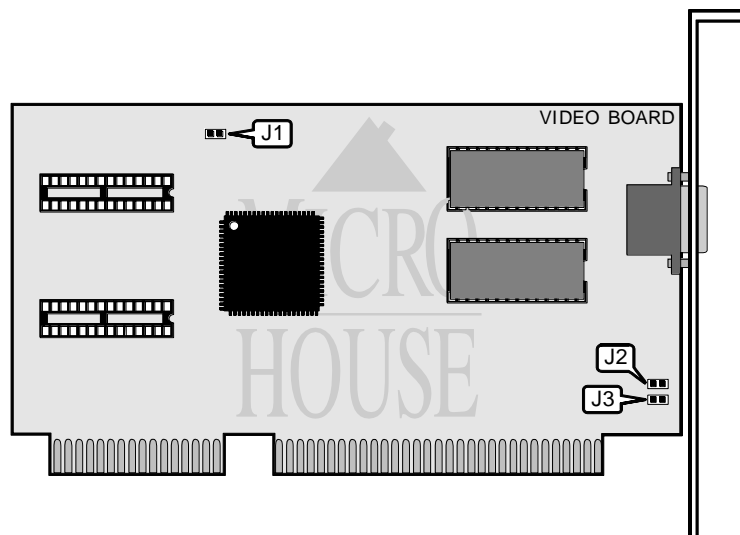
COMMODORE BUSINESS MACHINES, INC.

286 SYSTEM (PART #368987-01 REV B)

... continued from previous page

SERIAL PORT CONFIGURATION				
CN1	CN2	J16	J17	J18
COM1	COM2	pins 1 & 2 closed	pins 1 & 2 closed	pins 1 & 2 closed
COM1	Disabled	pins 1 & 2 closed	pins 2 & 3 closed	pins 1 & 2 closed
Disabled	COM1	pins 2 & 3 closed	pins 1 & 2 closed	pins 2 & 3 closed
COM2	COM1	pins 2 & 3 closed	pins 1 & 2 closed	pins 1 & 2 closed
COM2	Disabled	pins 2 & 3 closed	pins 2 & 3 closed	pins 1 & 2 closed
Disabled	COM2	pins 1 & 2 closed	pins 1 & 2 closed	pins 2 & 3 closed
Disabled	Disabled	N/A	pins 2 & 3 closed	pins 2 & 3 closed

PARALLEL PORT CONFIGURATION			
LPT	J19	J20	J21
LPT1	pins 1 & 2 closed	pins 2 & 3 closed	pins 1 & 2 closed
LPT2	pins 1 & 2 closed	pins 1 & 2 closed	pins 1 & 2 closed
LPT3	pins 2 & 3 closed	pins 1 & 2 closed	pins 1 & 2 closed
Disabled	pins 2 & 3 closed	pins 2 & 3 closed	pins 2 & 3 closed



VIDEO BOARD CONFIGURATION		
Function	Jumper	Position
í VGA board enabled	J1	Closed
VGA board disabled (VESA enabled)	J1	Open
í VGA 1024 x 768 mode disabled	J2	Open
VGA 1024 x 768 mode enabled	J2	Closed
í Monitor type select color	J3	Open
Monitor type select monochrome	J3	Closed