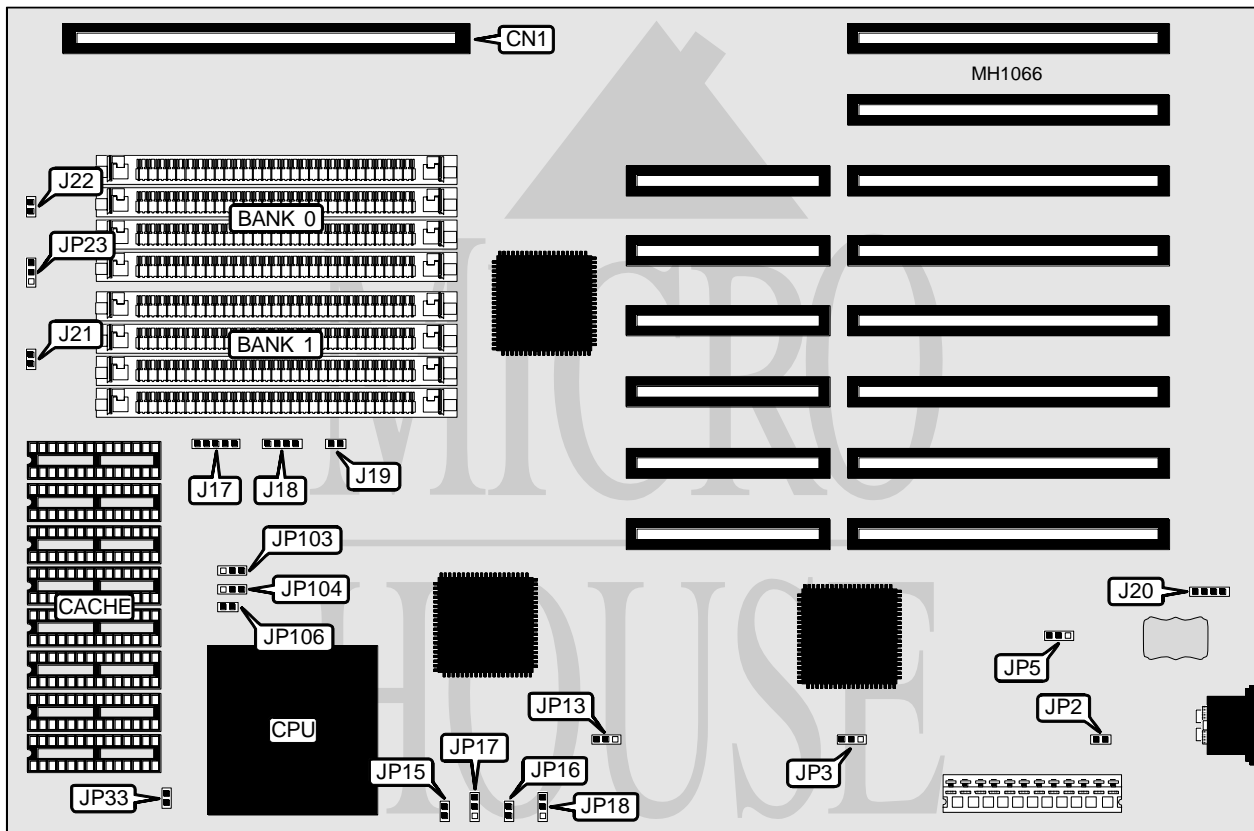


SOYO COMPUTER CO., LTD. 486SX/DX BOARD (VER. 2)

Processor	80486SX/80486DX
Processor Speed	20/25/33/50MHz
Chip Set	ESEQ
Max. Onboard DRAM	32MB
Cache	64/256KB
BIOS	AMI/Award
Dimensions	330mm x 218mm
I/O Options	32-bit external memory card slot
NPU Options	None



CONNECTIONS			
Purpose	Location	Purpose	Location
32-bit external memory card	CN1	External battery	J20
Power LED & keylock	J17	Turbo switch	J21
Speaker	J18	Turbo LED	J22
Reset switch	J19		

Continued on next page . . .

SOYO COMPUTER CO., LTD.

486SX/DX BOARD (VER. 2)

... continued from previous page

USER CONFIGURABLE SETTINGS		
Function	Jumper	Position
í Factory configured - do not alter	JP2	Closed
í Monitor type select monochrome	JP3	pins 2 & 3 closed
Monitor type select color	JP3	pins 1 & 2 closed
í CMOS memory normal operation	JP5	pins 1 & 2 closed
CMOS memory clear	JP5	pins 2 & 3 closed

DRAM CONFIGURATION				
Size	Bank 0	Bank 1	Bank 2	Bank 3
1MB	(4) 256K x 9	NONE	NONE	NONE
2MB	(4) 256K x 9	(4) 256K x 9	NONE	NONE
3MB	(4) 256K x 9	(4) 256K x 9	(4) 256K x 9	NONE
4MB	(4) 256K x 9	(4) 256K x 9	(4) 256K x 9	(4) 256K x 9
4MB	(4) 1M x 9	NONE	NONE	NONE
5MB	(4) 1M x 9	(4) 256K x 9	NONE	NONE
6MB	(4) 256K x 9	(4) 256K x 9	(4) 1M x 9	NONE
7MB	(4) 256K x 9	(4) 256K x 9	(4) 256K x 9	(4) 1M x 9
8MB	(4) 1M x 9	(4) 1M x 9	NONE	NONE
9MB	(4) 1M x 9	(4) 1M x 9	(4) 256K x 9	NONE
10MB	(4) 256K x 9	(4) 256K x 9	(4) 1M x 9	(4) 1M x 9
12MB	(4) 1M x 9	(4) 1M x 9	(4) 1M x 9	NONE
13MB	(4) 1M x 9	(4) 1M x 9	(4) 1M x 9	(4) 256K x 9
16MB	(4) 1M x 9	(4) 1M x 9	(4) 1M x 9	(4) 1M x 9
16MB	(4) 4M x 9	NONE	NONE	NONE
20MB	(4) 1M x 9	(4) 4M x 9	NONE	NONE
24MB	(4) 1M x 9	(4) 1M x 9	(4) 4M x 9	NONE
28MB	(4) 1M x 9	(4) 1M x 9	(4) 1M x 9	(4) 4M x 9
32MB	(4) 4M x 9	(4) 4M x 9	NONE	NONE
36MB	(4) 1M x 9	(4) 4M x 9	(4) 4M x 9	NONE
37MB	(4) 256K x 9	(4) 1M x 9	(4) 4M x 9	(4) 4M x 9
40MB	(4) 1M x 9	(4) 1M x 9	(4) 4M x 9	(4) 4M x 9
48MB	(4) 4M x 9	(4) 4M x 9	(4) 4M x 9	NONE
49MB	(4) 256K x 9	(4) 4M x 9	(4) 4M x 9	(4) 4M x 9
52MB	(4) 1M x 9	(4) 4M x 9	(4) 4M x 9	(4) 4M x 9
64MB	(4) 4M x 9	(4) 4M x 9	(4) 4M x 9	(4) 4M x 9

Note: Banks 2 and 3 are used when a 32-bit external memory card is installed at CN1.

Continued on next page...

SOYO COMPUTER CO., LTD.
486SX/DX BOARD (VER. 2)

... continued from previous page

CACHE CONFIGURATION	
Size	Bank 0
64KB	(8) 8K x 8
256KB	(8) 32K x 8

CACHE JUMPER CONFIGURATION					
Size	JP15	JP16	JP17	JP18	JP33
64KB	Open	Open	2 & 3	2 & 3	Open
256KB	Closed	Closed	1 & 2	1 & 2	Closed

Note: Pins designated should be in the closed position.

CPU TYPE CONFIGURATION			
Type	JP103	JP104	JP106
80486SX	pins 1 & 2 closed	pins 1 & 2 closed	Open
80486DX	pins 2 & 3 closed	pins 2 & 3 closed	Closed

CPU SPEED CONFIGURATION				
Speed	Oscillator at U18	Oscillator at U22	JP13	JP23
20MHz	40MHz	50MHz	pins 1 & 2 closed	pins 1 & 2 closed
25MHz	NONE	50MHz	pins 2 & 3 closed	pins 1 & 2 closed
33MHz	NONE	66MHz	pins 2 & 3 closed	pins 1 & 2 closed
50MHz	NONE	50MHz	pins 2 & 3 closed	pins 2 & 3 closed