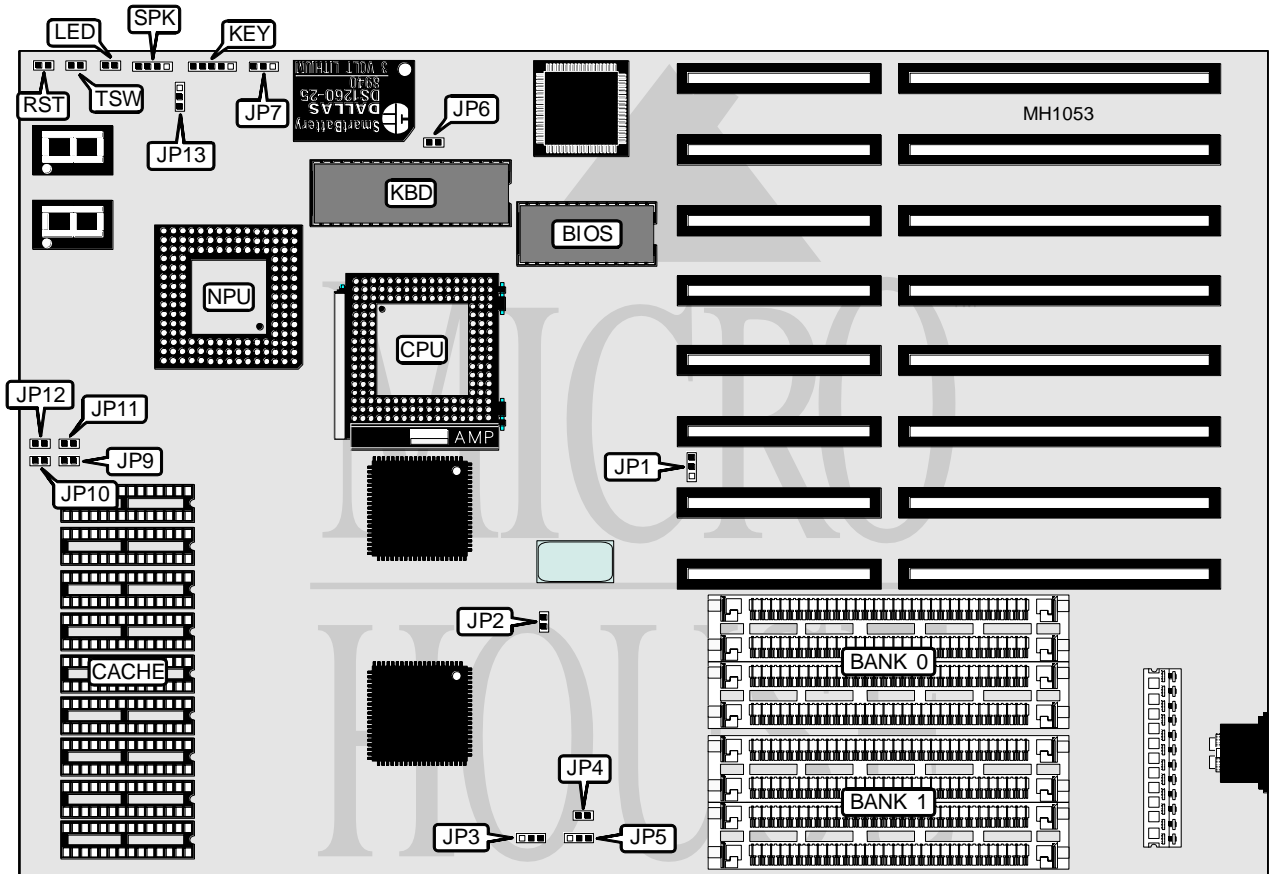


QUICKPATH SYSTEMS, INC. 486SX/DX MOTHERBOARD

Processor	80486SX/80487SX/80486DX/80486DX2
Processor Speed	16/20/25/33/50(internal)/50/66(internal)MHz
Chip Set	OPTI
Max. Onboard DRAM	32MB
Cache	64/256KB
BIOS	MR
Dimensions	330mm x 218mm
I/O Options	None
NPU Options	4167



CONNECTIONS			
Purpose	Location	Purpose	Location
Power LED & keylock	KEY	Speaker	SPK
Turbo LED	LED	Turbo switch	TSW
Reset switch	RST		

Continued on next page . . .

QUICKPATH SYSTEMS, INC.

486SX/DX MOTHERBOARD

... continued from previous page

USER CONFIGURABLE SETTINGS

Function	Jumper	Position
í Bus speed select ATCLK/4	JP2	Open
Bus speed select ATCLK/6	JP2	Closed
í Password check enabled	JP6	Closed
Password check disabled	JP6	Open
í CMOS memory normal operation	JP7	pins 2 & 3 closed
CMOS memory clear	JP7	pins 1 & 2 closed
í Battery type select internal	JP13	pins 1 & 2 closed
Battery type select external	JP13	pins 2 & 3 closed

DRAM CONFIGURATION

Size	Bank 0	Bank 1
1MB	(4) 256K x 9	NONE
2MB	(4) 256K x 9	(4) 256K x 9
4MB	(4) 1M x 9	NONE
5MB	(4) 256K x 9	(4) 1M x 9
8MB	(4) 1M x 9	(4) 1M x 9
16MB	(4) 4M x 9	NONE
20MB	(4) 4M x 9	(4) 1M x 9
20MB	(4) 1M x 9	(4) 4M x 9
32MB	(4) 4M x 9	(4) 4M x 9

CACHE CONFIGURATION

Size	Bank 0
64KB	(9) 8K x 8
256KB	(9) 32K x 8

CACHE JUMPER CONFIGURATION

Size	JP9	JP10	JP11	JP12
64KB	Open	Open	Open	Open
256KB	Closed	Closed	Open	Closed

CPU CONFIGURATION

Type	OSC1	JP1	JP3	JP4	JP5
80486SX-16MHz	32MHz	2 & 3	2 & 3	Open	Open
80486SX-20MHz	40MHz	2 & 3	2 & 3	Open	Open
80486SX-25MHz	50MHz	2 & 3	2 & 3	Open	Open
80487SX-20MHz	40MHz	2 & 3	1 & 2	Closed	1 & 2
80486DX-25MHz	50MHz	2 & 3	1 & 2	Closed	2 & 3
80486DX-33MHz	66MHz	2 & 3	1 & 2	Closed	2 & 3
80486DX-50MHz	50MHz	1 & 2	1 & 2	Closed	2 & 3
80486DX2-50MHz	25MHz	2 & 3	1 & 2	Closed	2 & 3
80486DX2-66MHz	33MHz	2 & 3	1 & 2	Closed	2 & 3

Note: Pins designated should be in the closed position.