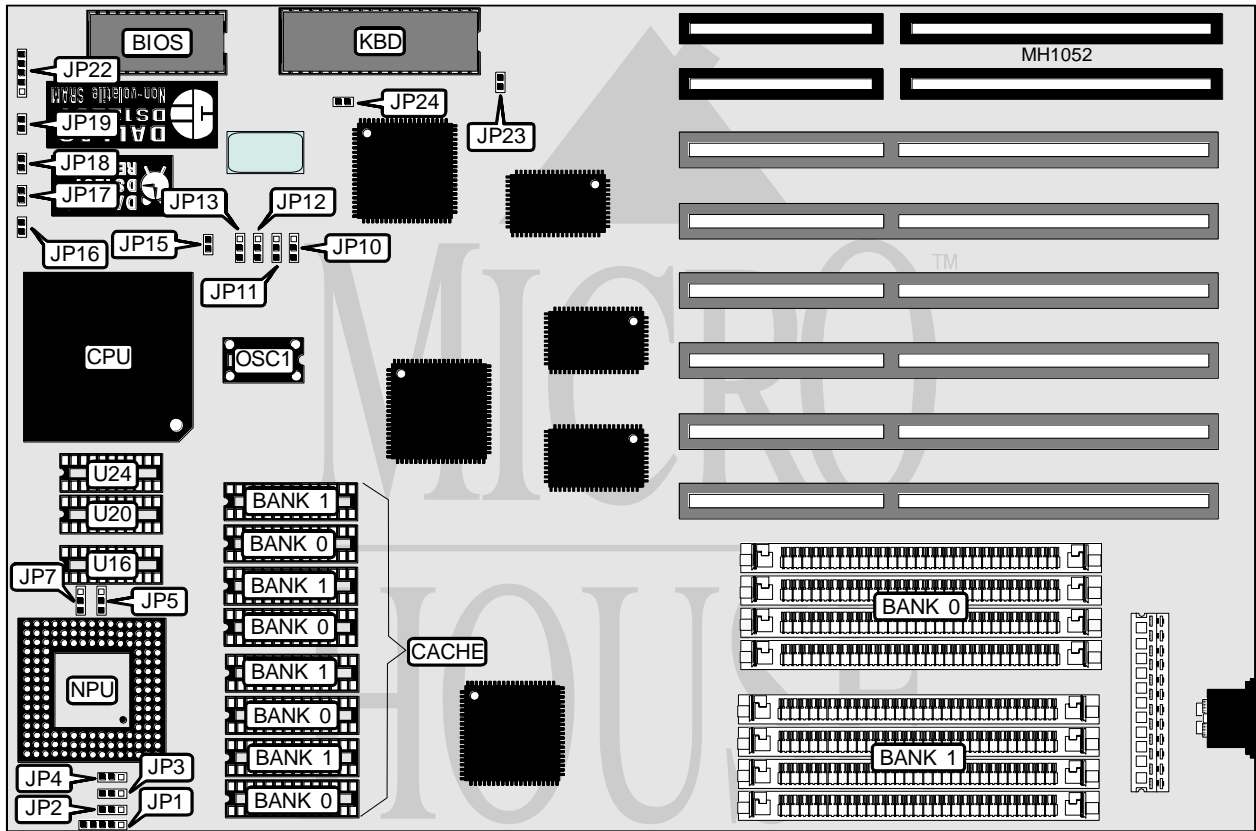


ANIX TECHNOLOGY CORPORATION

MST-430S

Processor	80486SX/80487SX/80486DX/80486DX2
Processor Speed	16/20/25/33/50(internal)/50/66(internal)MHz
Chip Set	SIS
Max. Onboard DRAM	128MB
Cache	64/128/256KB
BIOS	AMI
Dimensions	330mm x 218mm
I/O Options	None
NPU Options	4167



CONNECTIONS			
Purpose	Location	Purpose	Location
Turbo switch	JP16	Speaker	JP19
Turbo LED	JP17	Power LED & keylock	JP22
Reset switch	JP18		

Continued on next page . . .

ANIX TECHNOLOGY CORPORATION

MST-430S

... continued from previous page

USER CONFIGURABLE SETTINGS

Function	Jumper	Position
í Factory configured - do not alter	JP10	Closed
í Factory configured - do not alter	JP11	Closed
í Factory configured - do not alter	JP23	Closed
í Monitor type select color	JP24	Closed
Monitor type select monochrome	JP24	Open

DRAM CONFIGURATION

Size	Bank 0	Bank 1
1MB	(4) 256K x 9	NONE
2MB	(4) 256K x 9	(4) 256K x 9
4MB	(4) 1M x 9	NONE
8MB	(4) 1M x 9	(4) 1M x 9
16MB	(4) 4M x 9	NONE
20MB	(4) 1M x 9	(4) 4M x 9
32MB	(4) 4M x 9	(4) 4M x 9
64MB	(4) 16M x 9	NONE
128MB	(4) 16M x 9	(4) 16M x 9

CACHE CONFIGURATION

Size	Bank 0	Bank 1	TAG (U20)	TAG (U24)	Dirty (U16)
64KB	(4) 8K x 8	(4) 8K x 8	(1) 16K x 4	(1) 16K x 4	(1) 16K x 4
128KB	(4) 32K x 8	NONE	(1) 16K x 4	(1) 16K x 4	(1) 16K x 4
256KB	(4) 32K x 8	(4) 32K x 8	(1) 16K x 4	(1) 16K x 4	(1) 16K x 4

CACHE JUMPER CONFIGURATION

Size	JP1	JP2	JP3	JP4	JP12	JP13
64KB	2 & 3	1 & 2	J1 & 2 P1	1 & 2	1 & 2	1 & 2
128KB	1 & 2	2 & 3	1 & 2	2 & 3	1 & 2	2 & 3
256KB	4 & 5	2 & 3	2 & 3	2 & 3	2 & 3	2 & 3

Note: Pins designated should be in the closed position.

CPU TYPE CONFIGURATION

Type	JP5	JP7	JP15
80486SX	Open	pins 2 & 3 closed	Open
80487SX	pins 2 & 3 closed	pins 1 & 2 closed	Closed
80486DX	pins 1 & 2 closed	pins 1 & 2 closed	Closed
80486DX2	pins 1 & 2 closed	pins 1 & 2 closed	Closed

Note: CPU speed is determined by crystal installed at OSC1.