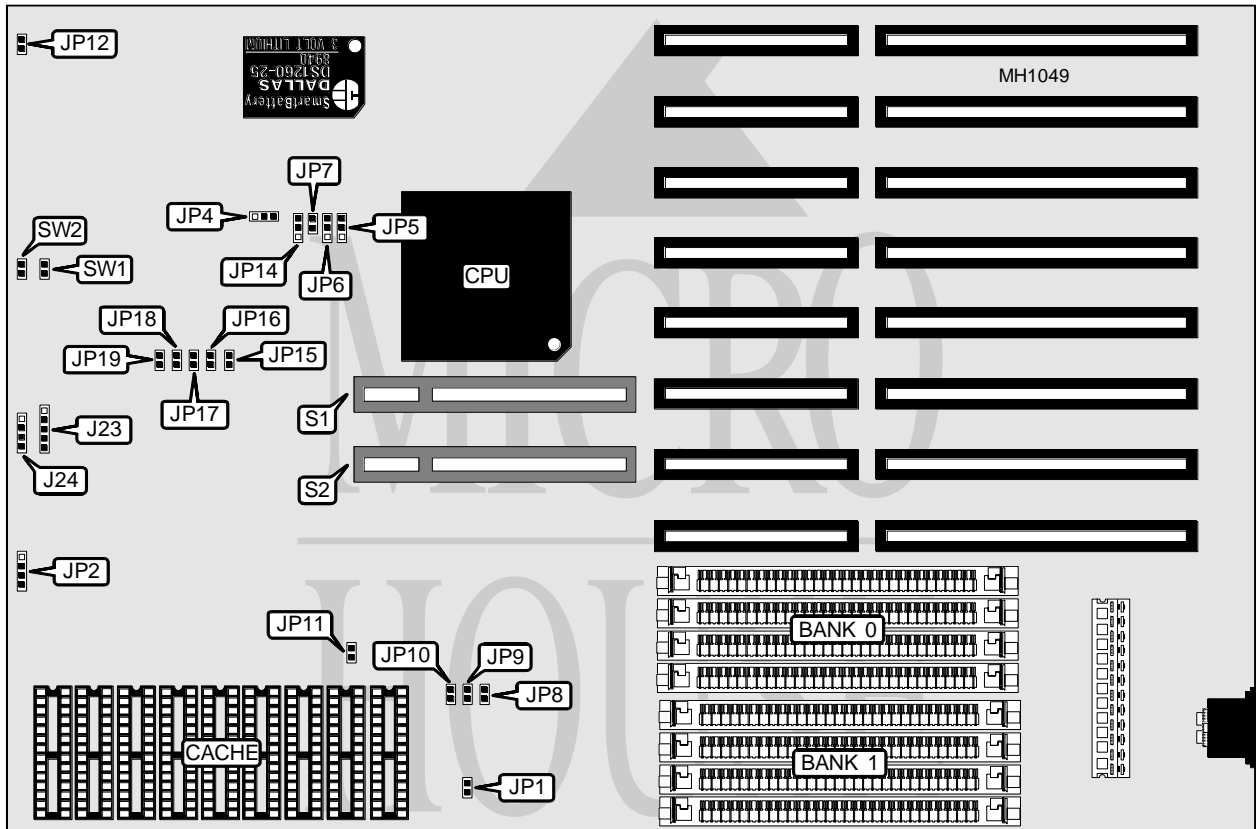


ORCHID TECHNOLOGY SUPERBOARD 486/VLB

| | |
|--------------------------|---|
| Processor | 80486SX/80487SX/80486DX/ODP486SX/80486DX2 |
| Processor Speed | 20/25/33/50(internal)/50/66(internal)MHz |
| Chip Set | OPTI |
| Max. Onboard DRAM | 32MB |
| Cache | 64/256KB |
| BIOS | AMI |
| Dimensions | 330mm x 218mm |
| I/O Options | 32-bit VESA local bus slots (2) |
| NPU Options | None |



| CONNECTIONS | | | |
|---------------------|----------|-----------------------------|----------|
| Purpose | Location | Purpose | Location |
| Power LED & keylock | J23 | 32-bit VESA local bus slots | S1 - S2 |
| Speaker | J24 | Reset switch | SW1 |
| Turbo LED | JP12 | Turbo switch | SW2 |

Continued on next page . . .

ORCHID TECHNOLOGY

SUPERBOARD 486/VLB

... continued from previous page

| USER CONFIGURABLE SETTINGS | | |
|--|--------|-------------------|
| Function | Jumper | Position |
| í Monitor type select color | JP1 | Open |
| Monitor type select monochrome | JP1 | Closed |
| í CMOS memory normal operation | JP2 | pins 2 & 3 closed |
| CMOS memory clear | JP2 | pins 1 & 2 closed |
| í Factory configured - do not alter | JP14 | N/A |
| í Factory configured - do not alter (VESA host select 80486) | JP15 | Closed |
| í Factory configured - do not alter (VESA host select 80486) | JP16 | Open |
| í VESA high speed write wait state select one | JP17 | Closed |
| VESA high speed write wait state select zero | JP17 | Open |
| í CPU speed select > 33MHz | JP18 | Closed |
| CPU speed select ≤ 33MHz | JP18 | Open |
| í Factory configured - do not alter | JP19 | Closed |

| DRAM CONFIGURATION | | |
|--------------------|--------------|--------------|
| Size | Bank 0 | Bank 1 |
| 1MB | (4) 256K x 9 | NONE |
| 2MB | (4) 256K x 9 | (4) 256K x 9 |
| 4MB | (4) 1M x 9 | NONE |
| 8MB | (4) 1M x 9 | (4) 1M x 9 |
| 16MB | (4) 4M x 9 | NONE |
| 32MB | (4) 4M x 9 | (4) 4M x 9 |

| CPU TYPE CONFIGURATION | | | | | |
|------------------------|------------|-------|-------|-------|--------|
| Type | Oscillator | JP4 | JP5 | JP6 | JP7 |
| 80486SX-20MHz | 20MHz | 1 & 2 | Open | 2 & 3 | Open |
| 80486SX-20MHz | 40MHz | 2 & 3 | Open | 2 & 3 | Open |
| 80486SX-25MHz | 25MHz | 1 & 2 | Open | 2 & 3 | Open |
| 80486SX-25MHz | 50MHz | 2 & 3 | Open | 2 & 3 | Open |
| ODP486SX-25MHz | 25MHz | 1 & 2 | Open | 2 & 3 | Open |
| ODP486SX-25MHz | 50MHz | 2 & 3 | Open | 2 & 3 | Open |
| 80486DX-25MHz | 25MHz | 1 & 2 | 2 & 3 | 1 & 2 | Closed |
| 80486DX-33MHz | 66MHz | 2 & 3 | 2 & 3 | 1 & 2 | Closed |
| 80486DX-50MHz | 50MHz | 1 & 2 | 2 & 3 | 1 & 2 | Closed |
| 80486DX2-50MHz | 25MHz | 1 & 2 | 2 & 3 | 1 & 2 | Closed |
| 80486DX2-50MHz | 50MHz | 2 & 3 | 2 & 3 | 1 & 2 | Closed |
| 80486DX2-66MHz | 66MHz | 2 & 3 | 2 & 3 | 1 & 2 | Closed |

Note: Pins designated should be in the closed position.

| CACHE CONFIGURATION | |
|---------------------|-------------|
| Size | Bank 0 |
| 64KB | (9) 8K x 8 |
| 256KB | (9) 32K x 8 |

Continued on next page ...

ORCHID TECHNOLOGY
SUPERBOARD 486/VLB*... continued from previous page*

| CACHE JUMPER CONFIGURATION | | | | |
|----------------------------|--------|--------|------|--------|
| Size | JP8 | JP9 | JP10 | JP11 |
| 64KB | Open | Open | Open | Open |
| 256KB | Closed | Closed | Open | Closed |