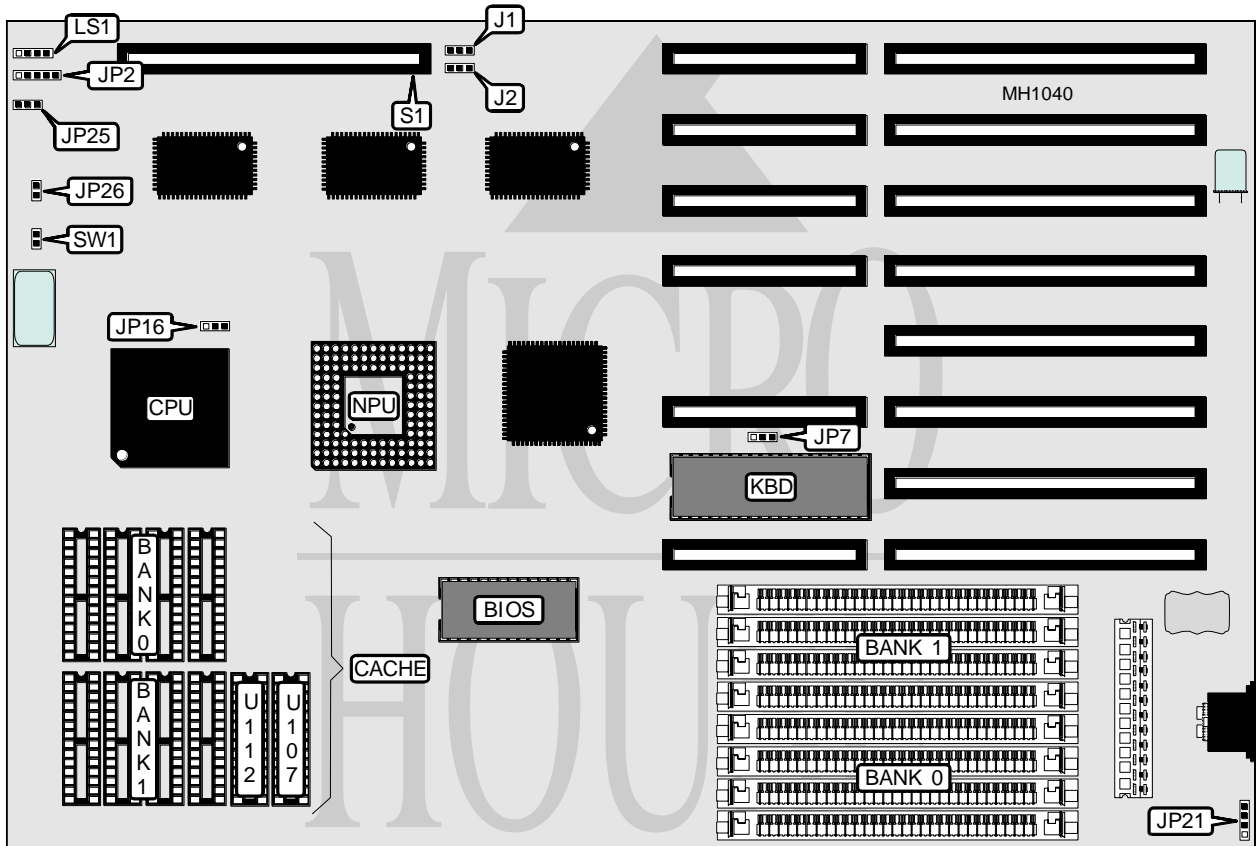


# ATRONICS INTERNATIONAL, INC.

## ATI-386/B2

**Processor** 80386DX  
**Processor Speed** 25/33/40MHz  
**Chip Set** SIS  
**Max. Onboard DRAM** 32MB  
**Cache** 32/64/128KB  
**BIOS** AMI  
**Dimensions** 330mm x 218mm  
**I/O Options** 32-bit external memory card slot  
**NPU Options** 80387/3167



CONNECTIONS			
Purpose	Location	Purpose	Location
Power LED & keylock	JP2	Speaker	LS1
External battery	JP21	32-bit external memory card	S1
Turbo switch	JP25	Reset switch	SW1
Turbo LED	JP26		

Continued on next page . . .

# ATRONICS INTERNATIONAL, INC.

## ATI-386/B2

... continued from previous page

### USER CONFIGURABLE SETTINGS

Function	Jumper	Position
í Factory configured - do not alter	J1	N/A
í Factory configured - do not alter	J2	N/A
í Monitor type select color	JP7	pins 1 & 2 closed
Monitor type select monochrome	JP7	pins 2 & 3 closed

### DRAM CONFIGURATION

Size	Bank 0	Bank 1
1MB	(4) 256K x 9	NONE
2MB	(4) 256K x 9	(4) 256K x 9
4MB	(4) 1M x 9	NONE
5MB	(4) 256K x 9	(4) 1M x 9
8MB	(4) 1M x 9	(4) 1M x 9
16MB	(4) 4M x 9	NONE
20MB	(4) 1M x 9	(4) 4M x 9
32MB	(4) 4M x 9	(4) 4M x 9

### CACHE CONFIGURATION

Size	Bank 0	Bank 1	TAG (U107)	TAG (U112)
32KB	(4) 8K x 8	NONE	(1) 8K x 8	NONE
64KB	(4) 8K x 8	(4) 8K x 8	(1) 8K x 8	(1) 8K x 8
128KB	(4) 32K x 8	NONE	(1) 32K x 8	NONE

### CACHE JUMPER CONFIGURATION

Size	JP16
32KB	pins 2 & 3 closed
64KB	pins 1 & 2 closed
128KB	pins 1 & 2 closed