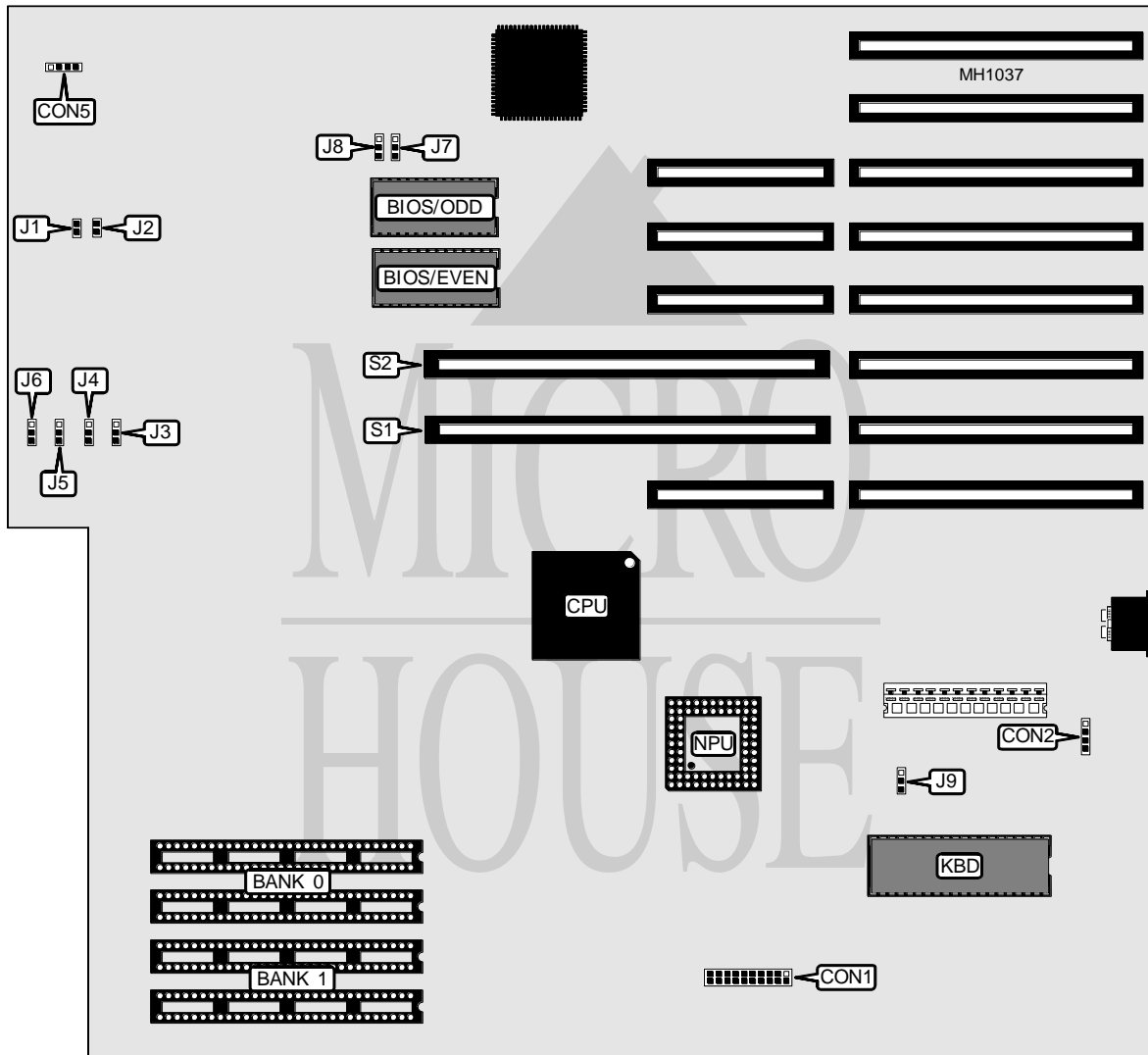


# AMERICAN RESEARCH CORPORATION

## 386S

<b>Processor</b>	80386DX
<b>Processor Speed</b>	16/20MHz
<b>Chip Set</b>	Unknown
<b>Max. Onboard DRAM</b>	8MB
<b>Cache</b>	None
<b>BIOS</b>	Phoenix
<b>Dimensions</b>	333mm x 305mm
<b>I/O Options</b>	32-bit external memory card slots (2), MIPS meter connector
<b>NPU Options</b>	80387



CONNECTIONS			
Purpose	Location	Purpose	Location
MIPS meter	CON1	Speaker	CON5
External battery	CON2		

Continued on next page . . .

# AMERICAN RESEARCH CORPORATION

## 386S

... continued from previous page

USER CONFIGURABLE SETTINGS		
Function	Jumper	Position
í Monitor type select color	J9	pins 1 & 2 closed
Monitor type select monochrome	J9	pins 2 & 3 closed

DRAM CONFIGURATION		
Size	Bank 0	Bank 1
2MB	(4) 256K x 9	(4) 256K x 9
8MB	(4) 1M x 9	(4) 1M x 9

DRAM CONFIGURATION				
Size	Bank 0	Bank 1	Slot S1	Slot S2
2MB	(4) 256K x 9	(4) 256K x 9	NONE	NONE
4MB	(4) 256K x 9	(4) 256K x 9	2MB	NONE
6MB	(4) 256K x 9	(4) 256K x 9	2MB	2MB
8MB	(4) 1M x 9	(4) 1M x 9	NONE	NONE
10MB	(4) 1M x 9	(4) 1M x 9	2MB	NONE
12MB <sup>1</sup>	(4) 1M x 9	(4) 1M x 9	2MB	2MB
12MB <sup>2</sup>	(4) 256K x 9	(4) 256K x 9	8MB	2MB
16MB	(4) 1M x 9	(4) 1M x 9	8MB	NONE

DRAM JUMPER CONFIGURATION				
Size	J3	J4	J5	J6
2MB	pins 2 & 3 closed	pins 2 & 3 closed	pins 2 & 3 closed	pins 2 & 3 closed
4MB	pins 1 & 2 closed	pins 2 & 3 closed	pins 2 & 3 closed	pins 2 & 3 closed
6MB	pins 1 & 2 closed	pins 1 & 2 closed	pins 2 & 3 closed	pins 2 & 3 closed
8MB	pins 2 & 3 closed	pins 2 & 3 closed	pins 2 & 3 closed	pins 1 & 2 closed
10MB	pins 1 & 2 closed	pins 2 & 3 closed	pins 2 & 3 closed	pins 1 & 2 closed
12MB <sup>1</sup>	pins 1 & 2 closed	pins 1 & 2 closed	pins 2 & 3 closed	pins 1 & 2 closed
12MB <sup>2</sup>	pins 1 & 2 closed	pins 1 & 2 closed	pins 1 & 2 closed	pins 2 & 3 closed
16MB	pins 1 & 2 closed	pins 1 & 2 closed	pins 1 & 2 closed	pins 1 & 2 closed

Note <sup>1</sup>: Use this setting when 2MB is installed on board and in slot S1 and S2.  
 Note <sup>2</sup>: Use this setting when 2MB is installed on board and in slot S1, and 8MB is installed in slot S2.

NPU CONFIGURATION		
Setting	J1	J2
Disabled	Open	Closed
Enabled	Closed	Open

BIOS CONFIGURATION		
Size	J7	J8
27128	pins 1 & 2 closed	pins 1 & 2 closed
27256	pins 2 & 3 closed	pins 1 & 2 closed
27512	pins 2 & 3 closed	pins 2 & 3 closed