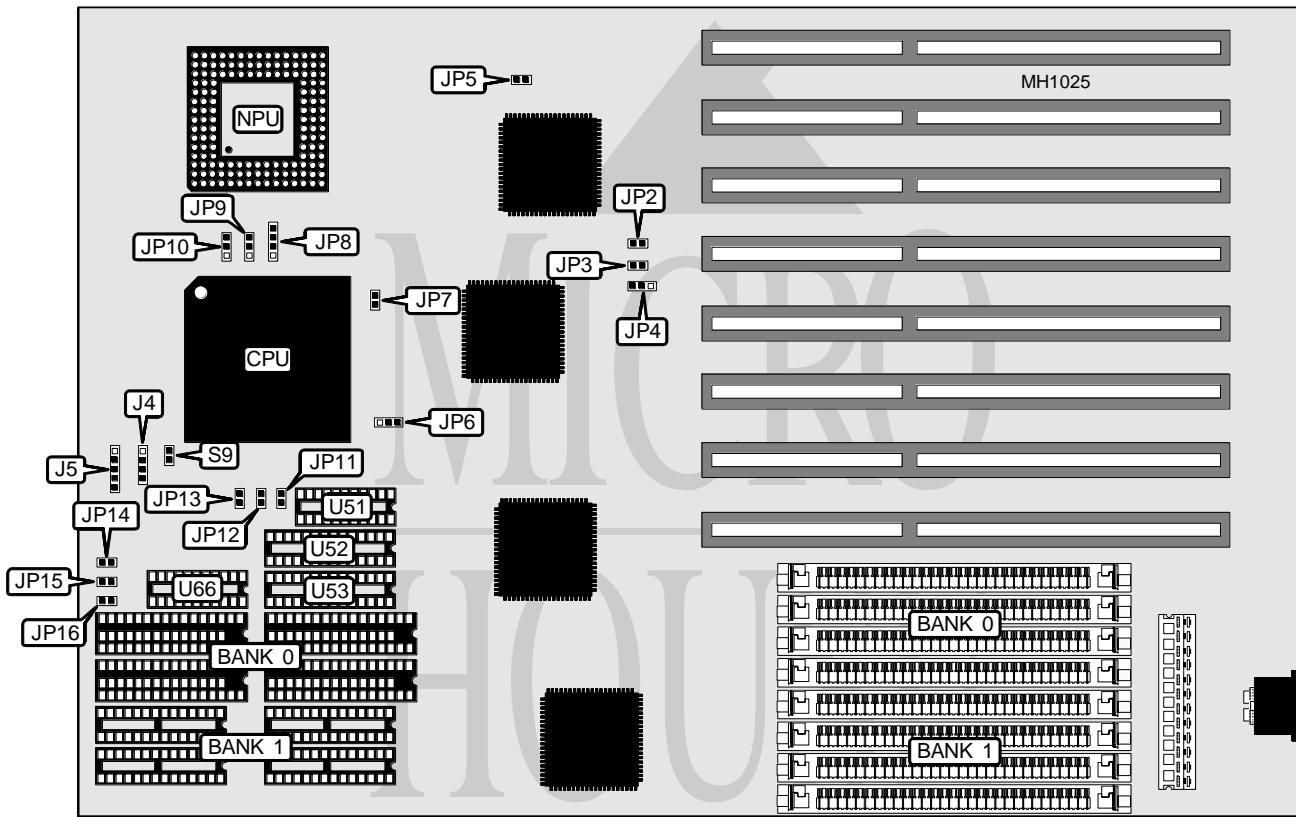


AMPTRON INTERNATIONAL, INC.

DX-7000 EISA

Processor	80486SX/80487SX/80486DX/ODP486SX/80486DX2
Processor Speed	16/20/25/33/50MHz
Chip Set	OPTI
Max. Onboard DRAM	32MB
Cache	64/128/256/512KB
BIOS	AMI
Dimensions	330mm x 218mm
I/O Options	None
NPU Options	4167



CONNECTIONS			
Purpose	Location	Purpose	Location
Speaker	J4	Reset switch	S9
Power LED & keylock	J5		

Continued on next page . . .

AMPTRON INTERNATIONAL, INC.

DX-7000 EISA

... continued from previous page

USER CONFIGURABLE SETTINGS		
Function	Jumper	Position
í Monitor type select color	JP5	Closed
Monitor type select monochrome	JP5	Open
í Factory configured - do not alter	JP7	N/A
CPU speed select iOCS/1	JP9	pins 1 & 2 closed
CPU speed select iOCS/2	JP9	pins 2 & 3 closed

DRAM CONFIGURATION		
Size	Bank 0	Bank 1
4MB	(4) 1M x 9	NONE
8MB	(4) 1M x 9	(4) 1M x 9
16MB	(4) 4M x 9	NONE
20MB	(4) 1M x 9	(4) 4M x 9
32MB	(4) 4M x 9	(4) 4M x 9

CACHE CONFIGURATION				
Size	Bank 0	Bank 1	TAG (U52)	TAG (U53)
64KB	(4) 8K x 8	(4) 8K x 8	(1) 8K x 8	NONE
128KB	(4) 32K x 8	NONE	(1) 8K x 8	NONE
256KB	(4) 32K x 8	(4) 32K x 8	(1) 8K x 8	(1) 8K x 8
256KB	(4) 32K x 8	(4) 32K x 8	(1) 32K x 8	NONE
512KB	(4) 128K x 8	NONE	(1) 32K x 8	NONE

Note : DIPP sockets U51 & U66 are always filled with (2) 64K x 1.

CACHE JUMPER CONFIGURATION							
Size	JP6	JP11	JP12	JP13	JP14	JP15	JP16
64KB	2 & 3	Open	Open	Open	Open	Open	Open
128KB	1 & 2	Open	Open	Closed	Open	Closed	Open
256KB	2 & 3	Open	Closed	Closed	Closed	Closed	Open
512KB	1 & 2	Closed	Closed	Closed	Closed	Closed	Closed

Note: Pins designated should be in the closed position.

CPU TYPE CONFIGURATION		
Type	JP8	JP10
80486SX	pins 2 & 3 closed	Open
80487SX	pins 1 & 2, 3 & 4 closed	pins 1 & 2 closed
ODP486SX	pins 1 & 2, 3 & 4 closed	pins 1 & 2 closed
80486DX	pins 1 & 2, 3 & 4 closed	pins 2 & 3 closed
80486DX2	pins 1 & 2, 3 & 4 closed	pins 2 & 3 closed

CPU SPEED CONFIGURATON			
Speed	JP2	JP3	JP4
25MHz	Open	Open	pins 1 & 2 closed
33MHz	Closed	Open	pins 1 & 2 closed
40MHz	Open	Closed	pins 1 & 2 closed
50MHz	Closed	Closed	pins 1 & 2 closed

