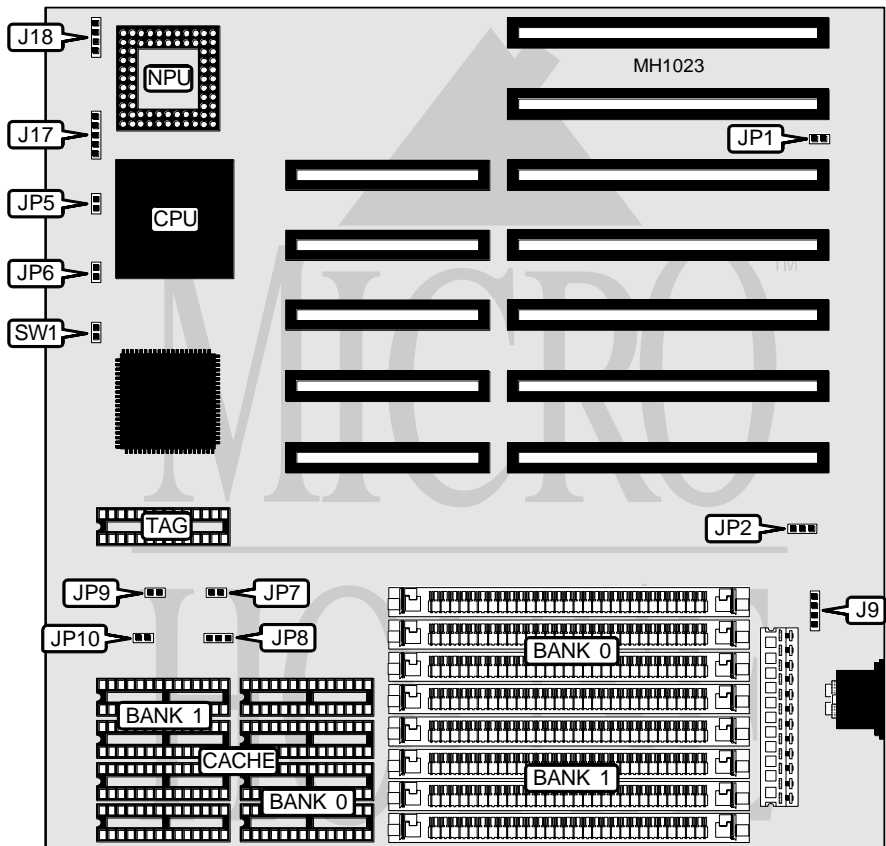


# AMPTRON INTERNATIONAL, INC.

## DX - 5 5 0 0

|                          |               |
|--------------------------|---------------|
| <b>Processor</b>         | 80386DX       |
| <b>Processor Speed</b>   | 40MHz         |
| <b>Chip Set</b>          | OPTI          |
| <b>Max. Onboard DRAM</b> | 32MB          |
| <b>Cache</b>             | 64/128/256KB  |
| <b>BIOS</b>              | AMI           |
| <b>Dimensions</b>        | 330mm x 218mm |
| <b>I/O Options</b>       | None          |
| <b>NPU Options</b>       | 80387DX       |



| CONNECTIONS         |          |              |          |
|---------------------|----------|--------------|----------|
| Purpose             | Location | Purpose      | Location |
| External battery    | J9       | Turbo switch | JP5      |
| Speaker             | J17      | Turbo LED    | JP6      |
| Power LED & keylock | J18      | Reset switch | SW1      |

Continued on next page . . .

# AMPTRON INTERNATIONAL, INC.

## DX-5500

... continued from previous page

| USER CONFIGURABLE SETTINGS     |        |                   |
|--------------------------------|--------|-------------------|
| Function                       | Jumper | Position          |
| í Monitor type select color    | JP1    | Open              |
| Monitor type select monochrome | JP1    | Closed            |
| í CMOS memory normal operation | JP2    | pins 2 & 3 closed |
| CMOS memory clear              | JP2    | pins 1 & 2 closed |

| DRAM CONFIGURATION |              |              |
|--------------------|--------------|--------------|
| Size               | Bank 0       | Bank 1       |
| 1MB                | (4) 256K x 9 | NONE         |
| 2MB                | (4) 256K x 9 | (4) 256K x 9 |
| 4MB                | (4) 1M x 9   | NONE         |
| 5MB                | (4) 256K x 9 | (4) 1M x 9   |
| 8MB                | (4) 1M x 9   | (4) 1M x 9   |
| 16MB               | (4) 4M x 9   | NONE         |
| 20MB               | (4) 4M x 9   | (4) 1M x 9   |
| 20MB               | (4) 1M x 9   | (4) 4M x 9   |
| 32MB               | (4) 4M x 9   | (4) 4M x 9   |

| CACHE CONFIGURATION |             |             |             |
|---------------------|-------------|-------------|-------------|
| Size                | Bank 0      | Bank 1      | TAG         |
| 64KB                | (4) 8K x 8  | (4) 8K x 8  | (1) 8K x 8  |
| 128KB               | (4) 32K x 8 | NONE        | (1) 8K x 8  |
| 256KB               | (4) 32K x 8 | (4) 32K x 8 | (1) 32K x 8 |

| CACHE JUMPER CONFIGURATION |        |                   |        |        |
|----------------------------|--------|-------------------|--------|--------|
| Size                       | JP7    | JP8               | JP9    | JP10   |
| 64KB                       | Open   | pins 2 & 3 closed | Open   | Open   |
| 128KB                      | Closed | pins 1 & 2 closed | Open   | Closed |
| 256KB                      | Closed | pins 2 & 3 closed | Closed | Closed |