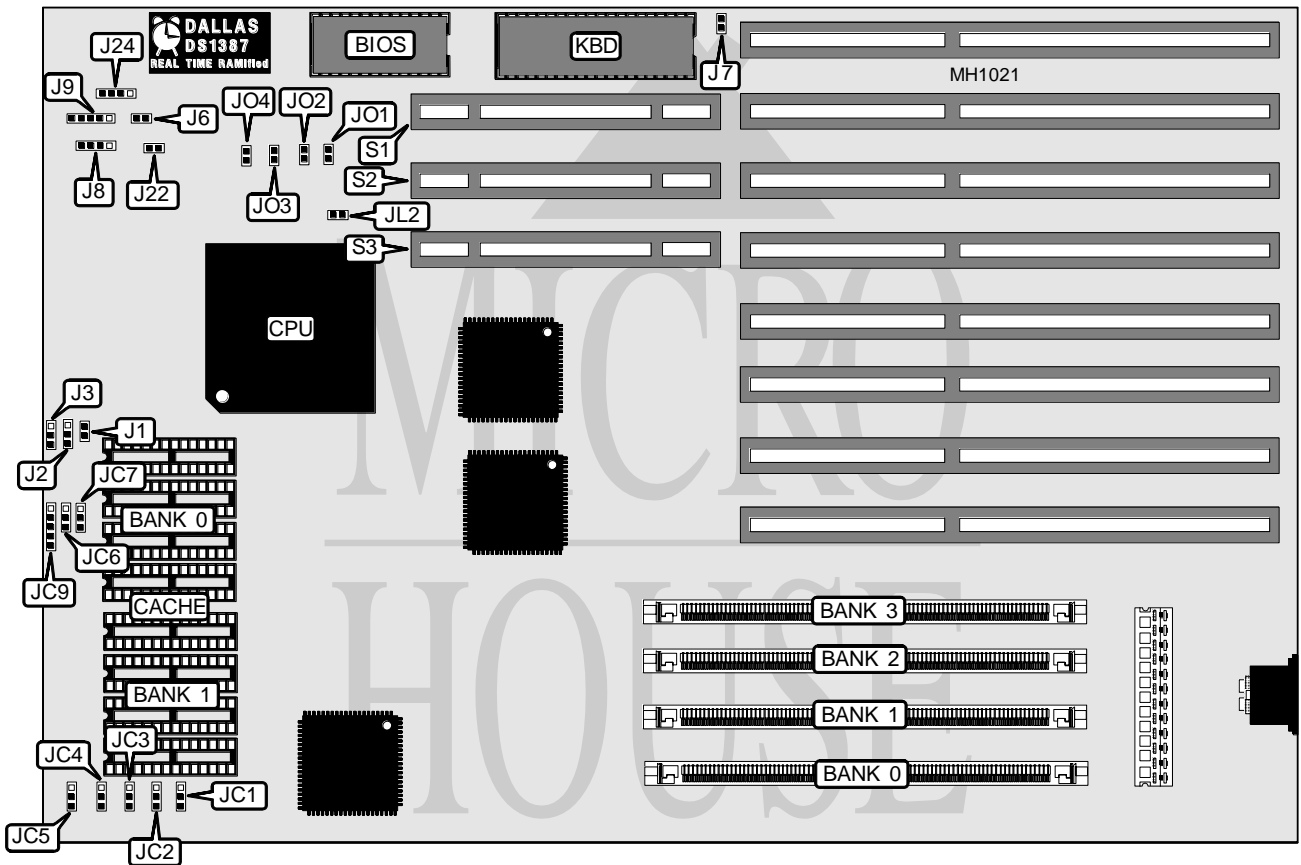


ADVANCED INTEGRATION RESEARCH, INC.

AIR486E1

Processor	80486SX/80487SX/80486DX/ODP486SX/80486DX2
Processor Speed	20/25/33/50(internal)/50/66(internal)MHz
Chip Set	SIS
Max. Onboard DRAM	256MB
Cache	64/128/256/512KB
BIOS	AMI/Phoenix
Dimensions	221mm x 332mm
I/O Options	32-bit VESA local bus slots (3)
NPU Options	None



CONNECTIONS			
Purpose	Location	Purpose	Location
Reset switch	J6	Turbo switch	J22
Speaker	J8	Turbo LED	J24/pins 1&2
Power LED & keylock	J9	32-bit VESA local bus slots	S1 - S3

Continued on next page . . .

ADVANCED INTEGRATION RESEARCH, INC.

AIR486E1

... continued from previous page

USER CONFIGURABLE SETTINGS		
Function	Jumper	Position
í Monitor type select color	J7	Closed
Monitor type select monochrome	J7	Open

DRAM CONFIGURATION				
Size	Bank 0	Bank 1	Bank 2	Bank 3
1MB	(1) 256K x 36	NONE	NONE	NONE
2MB	(1) 512K x 36	NONE	NONE	NONE
2MB	(1) 256K x 36	(1) 256K x 36	NONE	NONE
4MB	(1) 256K x 36	(1) 256K x 36	(1) 512K x 36	NONE
4MB	(1) 512K x 36	NONE	(1) 512K x 36	NONE
4MB	(1) 1M x 36	NONE	NONE	NONE
6MB	(1) 256K x 36	(1) 256K x 36	(1) 1M x 36	NONE
6MB	(1) 512K x 36	NONE	(1) 1M x 36	NONE
8MB	(1) 1M x 36	(1) 1M x 36	NONE	NONE
8MB	(1) 2M x 36	NONE	NONE	NONE
10MB	(1) 256K x 36	(1) 256K x 36	(1) 1M x 36	(1) 1M x 36
10MB	(1) 512K x 36	NONE	(1) 1M x 36	(1) 1M x 36
12MB	(1) 1M x 36	(1) 1M x 36	(1) 1M x 36	NONE
16MB	(1) 1M x 36	(1) 1M x 36	(1) 1M x 36	(1) 1M x 36
16MB	(1) 2M x 36	NONE	(1) 2M x 36	NONE
16MB	(1) 4M x 36	NONE	NONE	NONE
18MB	(1) 512K x 36	NONE	(1) 4MB x 36	NONE
18MB	(1) 256K x 36	(1) 256K x 36	(1) 4MB x 36	NONE
20MB	(1) 1M x 36	(1) 4M x 36	NONE	NONE
24MB	(1) 1M x 36	(1) 1M x 36	(1) 4M x 36	NONE
32MB	(1) 4M x 36	(1) 4M x 36	NONE	NONE
36MB	(1) 1M x 36	(1) 4M x 36	(1) 4M x 36	NONE
40MB	(1) 1M x 36	(1) 1M x 36	(1) 4M x 36	(1) 4M x 36
64MB	(1) 4M x 36	(1) 4M x 36	(1) 4M x 36	(1) 4M x 36
64MB	(1) 16M x 36	NONE	NONE	NONE
128MB	(1) 16M x 36	(1) 16M x 36	NONE	NONE
192MB	(1) 16M x 36	(1) 16M x 36	(1) 16M x 36	NONE
256MB	(1) 16M x 36	(1) 16M x 36	(1) 16M x 36	(1) 16M x 36

CACHE CONFIGURATION		
Size	Bank 0	Bank 1
64KB	(4) 8K x 8	(4) 8K x 8
128KB	(4) 32K x 8	NONE
256KB	(4) 32K x 8	(4) 32K x 8
512KB	(4) 128K x 8	NONE

Continued on next page . . .

ADVANCED INTEGRATION RESEARCH, INC.
AIR486I

... continued from previous page

CACHE JUMPER CONFIGURATION								
Size	JC1	JC2	JC3	JC4	JC5	JC6	JC7	JP9
64KB	1 & 2	1 & 2	1 & 2	1 & 2	1 & 2	1 & 2	1 & 2	2 & 3
128KB	2 & 3	2 & 3	1 & 2	1 & 2	1 & 2	1 & 2	2 & 3	1 & 2
256KB	2 & 3	2 & 3	2 & 3	1 & 2	1 & 2	2 & 3	2 & 3	4 & 5
512KB	2 & 3	2 & 3	2 & 3	2 & 3	2 & 3	2 & 3	2 & 3	1 & 2

Note: Pins designated should be in the closed position.

CPU TYPE CONFIGURATION			
Type	J1	J2	J3
80486SX	Open	Open	pins 2 & 3 closed
ODP486SX	Closed	pins 2 & 3 closed	pins 1 & 2 closed
80487SX	Closed	pins 2 & 3 closed	pins 1 & 2 closed
80486DX	Closed	pins 1 & 2 closed	pins 2 & 3 closed
80486DX2	Closed	pins 1 & 2 closed	pins 2 & 3 closed

CPU SPEED CONFIGURATION					
Speed	JO1	JO2	JO3	JO4	JL2
20MHz	Open	Closed	Closed	Closed	Open
25MHz	Closed	Open	Closed	Closed	Open
33MHz	Closed	Closed	Open	Closed	Open
50iMHz	Closed	Open	Closed	Closed	Open
50MHz	Open	Open	Open	Open	Closed
66iMHz	Closed	Closed	Open	Closed	Open