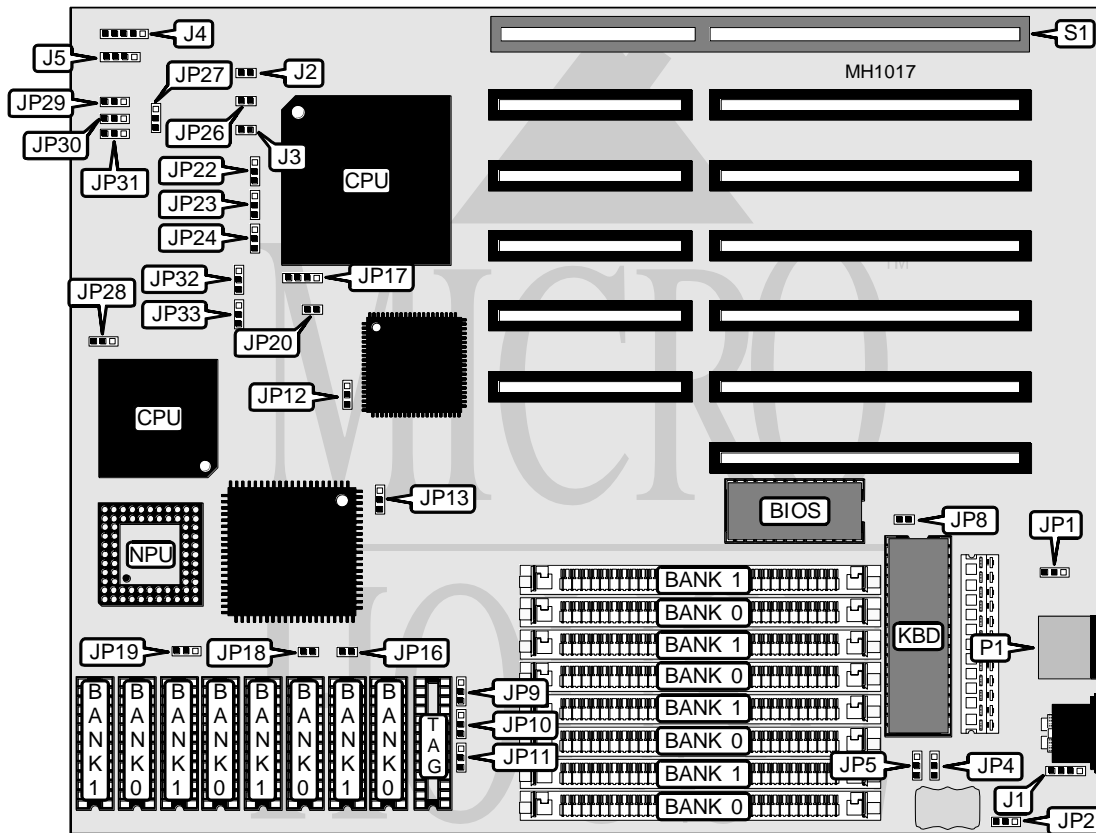


FAIR FRIEND ENTERPRISE COMPANY, LTD.

386/486 FM-4050XCIM

Processor	80386DX/80486SX/80487SX/80486DX/80486DX2
Processor Speed	16/20/25/33/50(internal)/50/66(internal)MHz
Chip Set	UNI
Max. Onboard DRAM	128MB
Cache	64/128/256KB
BIOS	AMI
Dimensions	220mm x 220mm
I/O Options	32-bit local bus card slot, PS/2 mouse port
NPU Options	80387



CONNECTIONS			
Purpose	Location	Purpose	Location
External battery	J1	Speaker	J5
Turbo LED	J2	Turbo switch	JP26
Reset switch	J3	Mouse port	P1
Power LED & keylock	J4	32-bit local bus slot	S1

Continued on next page . . .

FAIR FRIEND ENTERPRISE COMPANY, LTD.

386/486 FM-4050XCIM

... continued from previous page

USER CONFIGURABLE SETTINGS

Function	Jumper	Position
í CMOS memory normal operation	JP2	pins 1 & 2 closed
CMOS memory clear	JP2	pins 2 & 3 closed
í Monitor type select color	JP8	Closed
Monitor type select monochrome	JP8	Open

DRAM CONFIGURATION

Size	Bank 0	Bank 1
1MB	(4) 256K x 9	NONE
2MB	(4) 256K x 9	(4) 256K x 9
4MB	(4) 1M x 9	NONE
5MB	(4) 256K x 9	(4) 1M x 9
8MB	(4) 1M x 9	(4) 1M x 9
16MB	(4) 4M x 9	NONE
20MB	(4) 1M x 9	(4) 4M x 9
32MB	(4) 4M x 9	(4) 4M x 9
64MB	(4) 16M x 9	NONE
80MB	(4) 4M x 9	(4) 16M x 9
128MB	(4) 16M x 9	(4) 16M x 9

CACHE CONFIGURATION

Size	Bank 0	Bank 1	TAG
64KB	(4) 8K x 8	(4) 8K x 8	(1) 8K x 8
128KB	(4) 32K x 8	NONE	(1) 8K x 8
256KB	(4) 32K x 8	(4) 32K x 8	(1) 32K x 8

CACHE JUMPER CONFIGURATION

Size	JP9	JP10	JP11	JP16	JP18	JP19
64KB	2 & 3	2 & 3	1 & 2	Open	Open	Open
128KB	2 & 3	1 & 2	2 & 3	Closed	Open	1 & 2
256KB	1 & 2	2 & 3	2 & 3	Closed	Closed	2 & 3

Note: Pins designated should be in the closed position.

CPU TYPE CONFIGURATION

Type	JP12	JP13	JP20	JP23	JP24	JP27	JP28
80386	2 & 3	2 & 3	Open	2 & 3	2 & 3	2 & 3	2 & 3
80486	1 & 2	1 & 2	3 & 4	1 & 2	1 & 2	1 & 2	1 & 2

Note: Pins designated should be in the closed position.

CPU TYPE CONFIGURATION (80486 ONLY)

Type	JP17	JP22
80486SX	pins 2 & 3 closed	Open
80487SX	pins 1 & 2, 3 & 4 closed	pins 2 & 3 closed
80486DX	pins 1 & 2, 3 & 4 closed	pins 1 & 2 closed
80486DX2	pins 1 & 2, 3 & 4 closed	pins 1 & 2 closed

FAIR FRIEND ENTERPRISE COMPANY, LTD.**386/486 FM-4050XCIM***... continued from previous page***CPU SPEED CONFIGURATION (80386 ONLY)**

Speed	JP32	JP33
25MHz	pins 2 & 3 closed	pins 2 & 3 closed
33MHz	pins 1 & 2 closed	pins 1 & 2 closed
40MHz	pins 1 & 2 closed	pins 1 & 2 closed

MOUSE CONFIGURATION

Setting	JP1	JP4	JP5
Not installed	pins 1 & 2 closed	pins 1 & 2 closed	pins 1 & 2 closed
Installed	pins 2 & 3 closed	pins 2 & 3 closed	pins 2 & 3 closed