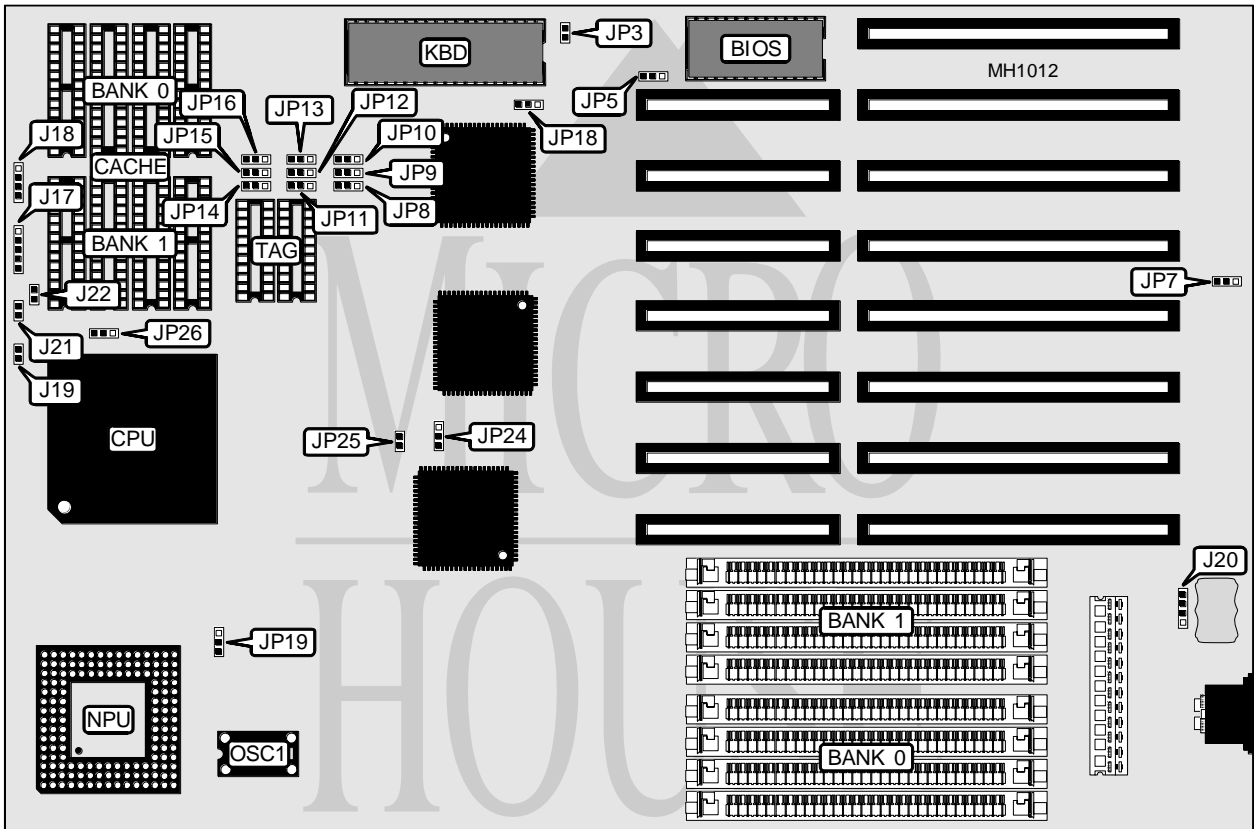


SOYO COMPUTER CO., LTD.
SY - 020H

Processor	80486SX/80487SX/80486DX
Processor Speed	16/20/25/33/40/50(internal)/50/66(internal)MHz
Chip Set	SIS
Max. Onboard DRAM	32MB
Cache	32/64/128/256KB
BIOS	AMI
Dimensions	245mm x 220mm
I/O Options	None
NPU Options	4167



CONNECTIONS			
Purpose	Location	Purpose	Location
Power LED & keylock	J17	External battery	J20
Speaker	J18	Turbo switch	J21
Reset switch	J19	Turbo LED	J22

Note: The oscillator at OSC1 must match the external speed of the CPU installed.

Continued on next page . . .

SOYO COMPUTER CO., LTD.
SY-020H

... continued from previous page

USER CONFIGURABLE SETTINGS		
Function	Jumper	Position
í Monitor type select monochrome	JP3	Open
Monitor type select color	JP3	Closed
í CMOS memory normal operation	JP5	pins 1 & 2 closed
CMOS memory clear	JP5	pins 2 & 3 closed
í Power good signal detect from board	JP7	pins 1 & 2 closed
Power good signal detect from power supply	JP7	pins 2 & 3 closed
í Keyboard BIOS clock source select programmable timer	JP18	pins 1 & 2 closed
Keyboard BIOS clock source select 7MHz	JP18	pins 2 & 3 closed
í CPU speed select ≥ to 25MHz	JP19	pins 1 & 2 closed
CPU speed select < 25MHz	JP19	pins 2 & 3 closed

DRAM CONFIGURATION		
Size	Bank 0	Bank 1
1MB	(4) 256K x 9	NONE
2MB	(4) 256K x 9	(4) 256K x 9
4MB	(4) 1M x 9	NONE
8MB	(4) 1M x 9	(4) 1M x 9
16MB	(4) 4M x 9	NONE
20MB	(4) 1M x 9	(4) 4M x 9
32MB	(4) 4M x 9	(4) 4M x 9

CACHE CONFIGURATION			
Size	Bank 0	Bank 1	TAG
32KB	(4) 8K x 8	NONE	(2) 4K x 4
64KB	(4) 8K x 8	(4) 8K x 8	(2) 4K x 4
128KB	(4) 32K x 8	NONE	(2) 16K x 4
256KB	(4) 32K x 8	(4) 32K x 8	(2) 16K x 4

CACHE JUMPER CONFIGURATION									
Size	JP8	JP9	JP10	JP11	JP12	JP13	JP14	JP15	JP16
32KB	1 & 2	1 & 2	1 & 2	1 & 2	1 & 2	1 & 2	1 & 2	1 & 2	1 & 2
64KB	2 & 3	1 & 2	1 & 2	2 & 3	1 & 2	1 & 2	2 & 3	2 & 3	1 & 2
128KB	2 & 3	2 & 3	1 & 2	2 & 3	2 & 3	1 & 2	1 & 2	1 & 2	2 & 3
256KB	2 & 3	2 & 3	2 & 3	2 & 3	2 & 3	2 & 3	2 & 3	2 & 3	2 & 3

Note: Pins designated should be in the closed position.

CPU CONFIGURATION			
Type	JP24	JP25	JP26
80486SX	pins 2 & 3 closed	Open	Open
80487SX	pins 1 & 2 closed	Closed	pins 2 & 3 closed
80486DX	pins 1 & 2 closed	Closed	pins 1 & 2 closed