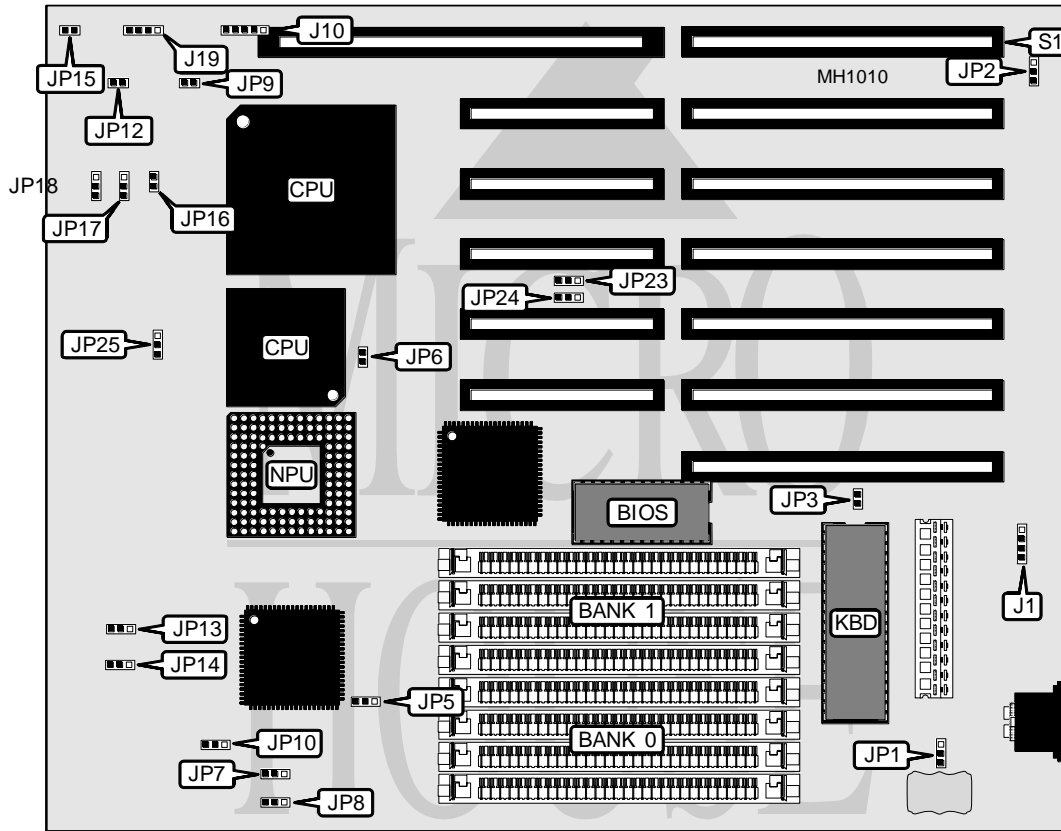


FAIR FRIEND ENTERPRISE COMPANY, LTD.
386/486 4033XTM

Processor 80386DX/80486SX/80486DX
Processor Speed 20/25/33MHz
Chip Set OPTI
Max. Onboard DRAM 32MB
Cache None
BIOS AMI
Dimensions 220mm x 220mm
I/O Options 32-bit local bus card slot
NPU Options 80387/3167



CONNECTIONS			
Purpose	Location	Purpose	Location
External battery	J1	Turbo switch	JP12
Power LED & keylock	J10	Reset switch	JP15
Speaker	J19	32-bit local bus card	S1
Turbo LED	JP9		

Continued on next page . . .

FAIR FRIEND ENTERPRISE COMPANY, LTD.

386/486 4033XTM

... continued from previous page

USER CONFIGURABLE SETTINGS

Function	Jumper	Position
í CMOS memory normal operation	JP1	pins 1 & 2 closed
CMOS memory clear	JP1	pins 2 & 3 closed
í Monitor type select color	JP3	Closed
Monitor type select monochrome	JP3	Open
í CPU cache card absent	JP6	Closed
CPU cache card present	JP6	Open
í Factory configured - do not alter	JP23	pins 2 & 3 closed
í Factory configured - do not alter	JP24	pins 2 & 3 closed

DRAM CONFIGURATION

Size	Bank 0	Bank 1
1MB	(4) 256K x 9	NONE
2MB	(4) 256K x 9	(4) 256K x 9
4MB	(4) 1M x 9	NONE
5MB	(4) 256K x 9	(4) 1M x 9
8MB	(4) 1M x 9	(4) 1M x 9
16MB	(4) 4M x 9	NONE
32MB	(4) 4M x 9	(4) 4M x 9

CPU SPEED CONFIGURATION

Speed	JP7	JP8	JP10
16MHz	pins 2 & 3 closed	pins 2 & 3 closed	pins 2 & 3 closed
20MHz	pins 2 & 3 closed	pins 2 & 3 closed	pins 1 & 2 closed
25MHz	pins 1 & 2 closed	pins 2 & 3 closed	pins 1 & 2 closed
33MHz	pins 2 & 3 closed	pins 1 & 2 closed	pins 2 & 3 closed

CPU TYPE CONFIGURATION

Type	JP2	JP5	JP13	JP14	JP25
80386	1 & 2	1 & 2	1 & 2	1 & 2	1 & 2
80486	2 & 3	2 & 3	2 & 3	2 & 3	2 & 3

Note: Pins deesignated should be in the closed position.

CPU TYPE CONFIGURATION (80486 ONLY)

Type	JP16	JP17	JP18
80486SX	Open	pins 2 & 3 closed	Open
80487SX	Closed	pins 1 & 2 closed	pins 2 & 3 closed
80486DX	Closed	pins 1 & 2 closed	pins 1 & 2 closed