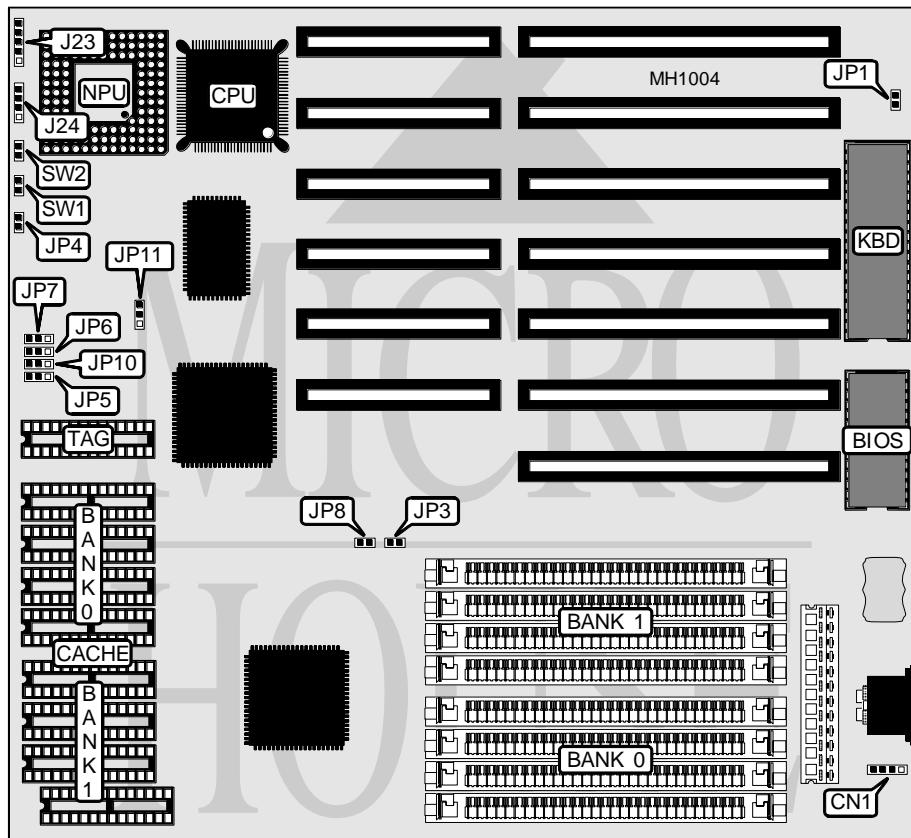


# SHUTTLE COMPUTER INTERNATIONAL, INC.

## HOT-307H

<b>Processor</b>	80386DX
<b>Processor Speed</b>	33/40MHz
<b>Chip Set</b>	OPTI
<b>Max. Onboard DRAM</b>	32MB
<b>Cache</b>	32/64/128/256KB
<b>BIOS</b>	AMI
<b>Dimensions</b>	240mm x 220mm
<b>I/O Options</b>	None
<b>NPU Options</b>	80387/3167



CONNECTIONS			
Purpose	Location	Purpose	Location
External battery	CN1	Turbo LED	JP4
Power LED & keylock	J23	Reset switch	SW1
Speaker	J24	Turbo switch	SW2
Note: Board may be supplied with either a PGA or PQFP CPU.			

Continued on next page . . .

# SHUTTLE COMPUTER INTERNATIONAL, INC.

## HOT-307H

... continued from previous page

USER CONFIGURABLE SETTINGS		
Function	Jumper	Position
í Monitor type select color	JP1	closed
Monitor type select monochrome	JP1	open
í Bus speed select ATCLK/8	JP3	closed
Bus speed select ATCLK/6	JP3	open
í CPU speed select 33MHz	JP11	pins 2 & 3 closed
CPU speed select 40MHz	JP11	pins 1 & 2 closed

DRAM CONFIGURATION		
Size	Bank 0	Bank 1
1MB	(4) 256K x 9	NONE
2MB	(4) 256K x 9	(4) 256K x 9
4MB	(4) 1M x 9	NONE
5MB	(4) 256K x 9	(4) 1M x 9
8MB	(4) 1M x 9	(4) 1M x 9
16MB	(4) 4M x 9	NONE
20MB	(4) 1M x 9	(4) 4M x 9
32MB	(4) 4M x 9	(4) 4M x 9

CACHE CONFIGURATION			
Size	Bank 0	Bank 1	TAG
32KB	(4) 8K x 8	NONE	(1) 8K x 8
64KB	(4) 8K x 8	(4) 8K x 8	(1) 8K x 8
128KB	(4) 32K x 8	NONE	(1) 8K x 8
256KB	(4) 32K x 8	(4) 32K x 8	(1) 32K x 8

CACHE JUMPER CONFIGURATION					
Size	JP5	JP6	JP7	JP8	JP10
32KB	1 & 2	1 & 2	1 & 2	Open	2 & 3
64KB	2 & 3	1 & 2	1 & 2	Open	1 & 2
128KB	2 & 3	1 & 2	2 & 3	Closed	1 & 2
256KB	2 & 3	2 & 3	2 & 3	Closed	1 & 2

Note: Pins designated should be in the closed position.