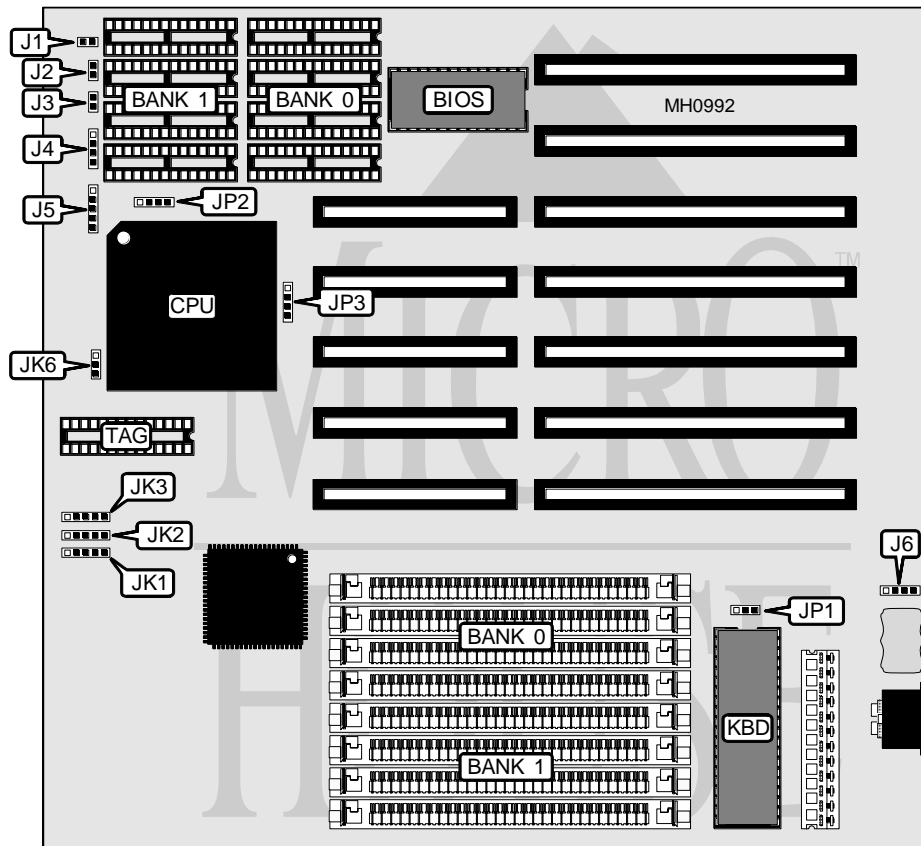


# BEK-TRONIC TECHNOLOGY, INC.

## BEK-4806

<b>Processor</b>	80486SX/80487SX/80486DX
<b>Processor Speed</b>	50MHz
<b>Chip Set</b>	ACC
<b>Max. Onboard DRAM</b>	32MB
<b>Cache</b>	32/64/128/256KB
<b>BIOS</b>	Unidentified
<b>Dimensions</b>	220mm x 220mm
<b>I/O Options</b>	None
<b>NPU Options</b>	None



CONNECTIONS			
Purpose	Location	Purpose	Location
Reset switch	J1	Speaker	J4
Turbo switch	J2	Power LED & keylock	J5
Turbo LED	J3	External battery	J6

Continued on next page . . .

## BEK-TRONIC TECHNOLOGY, INC.

## BEK-4806

... continued from previous page

USER CONFIGURABLE SETTINGS		
Function	Jumper	Position
í Monitor type select color	JP1	pins 1 & 2 closed
Monitor type select monochrome	JP1	pins 2 & 3 closed
Note: The settings for this jumper are unidentified.		

DRAM CONFIGURATION		
Size	Bank 0	Bank 1
1MB	(4) 256K x 9	NONE
2MB	(4) 256K x 9	(4) 256K x 9
4MB	(4) 1M x 9	NONE
5MB	(4) 256K x 9	(4) 1M x 9
8MB	(4) 1M x 9	(4) 1M x 9
16MB	(4) 4M x 9	NONE
20MB	(4) 1M x 9	(4) 4M x 9
32MB	(4) 4M x 9	(4) 4M x 9

CACHE CONFIGURATION			
Size	Bank 0	Bank 1	TAG
32KB	(4) 8K x 8	NONE	(1) 8K x 8
64KB	(4) 8K x 8	(4) 8K x 8	(1) 8K x 8
128KB	(4) 32K x 8	NONE	(1) 32K x 8
256KB	(4) 32K x 8	(4) 32K x 8	(1) 32K x 8

CACHE JUMPER CONFIGURATION				
Size	JK1	JK2	JK3	JK6
32KB	1 & 2, 3 & 4	1 & 2, 3 & 4	1 & 2, 3 & 4	1 & 2
64KB	1 & 2, 3 & 4	2 & 3, 4 & 5	1 & 2, 3 & 4	2 & 3
128KB	2 & 3, 4 & 5	1 & 2, 4 & 5	1 & 2, 3 & 4	1 & 2
256KB	2 & 3, 4 & 5	2 & 3, 4 & 5	2 & 3, 4 & 5	2 & 3
Note: Pins designated should be in the closed position.				

CPU TYPE CONFIGURATION		
Type	JP2	JP3
80486SX	pins 2 & 3 closed	pins 2 & 3 closed
80487SX	pins 1 & 2 closed	pins 1 & 2 and 3 & 4 closed
80486DX	pins 3 & 4 closed	pins 1 & 2 and 3 & 4 closed