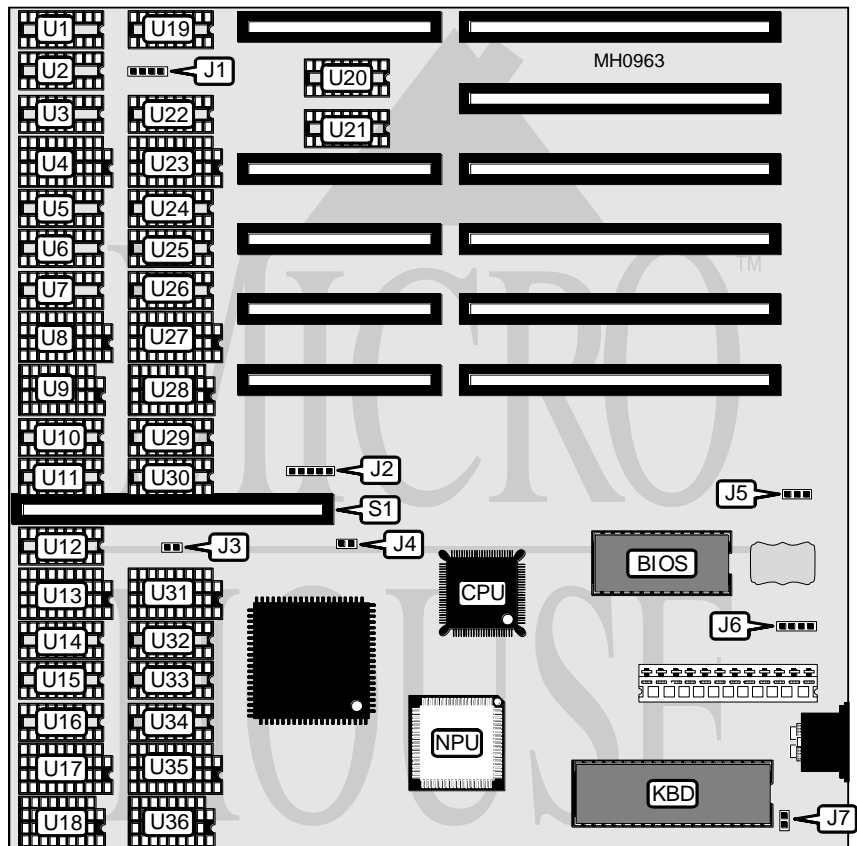


# JC INFORMATION SYSTEMS CORPORATION

## 386SX SCAT II MODEL 2050

**Processor** 80386SX  
**Processor Speed** 16/20MHz  
**Chip Set** C & T SCAT  
**Max. Onboard DRAM** 4MB  
**Cache** None  
**BIOS** C & T  
**Dimensions** 220mm x 220mm  
**I/O Options** 8-bit factory test card slot  
**NPU Options** 80387SX



CONNECTIONS			
Purpose	Location	Purpose	Location
Speaker	J1	Turbo LED	J4
Power LED & keylock	J2	External battery	J6
Reset switch	J3	8-bit factory test card	S1

Continued on next page . . .

# JC INFORMATION SYSTEMS CORPORATION

## 386SX SCAT II MODEL 2050

... continued from previous page

USER CONFIGURABLE SETTINGS		
Function	Jumper	Position
í CMOS memory normal operation (internal battery)	J5	pins 2 & 3 closed
CMOS memory normal operation (external battery)	J5	Open
CMOS memory clear	J5	pins 1 & 2 closed
í Monitor type select color (CGA only)	J7	Closed
Monitor type select monochrome	J7	Open

DRAM CONFIGURATION						
Size	U23, U27, U31, U35	U28 & U36	U4, U8, U13, U17	U9 & U18	U19-U36	U1-U18
512KB	(4) 44256	(2) 41256	NONE	NONE	N/A	N/A
1MB	(4) 44256	(2) 41256	(4) 44256	(2) 41256	N/A	N/A
2MB	N/A	N/A	N/A	N/A	(18) 411000	NONE
4MB	N/A	N/A	N/A	N/A	(18) 411000	(18) 411000