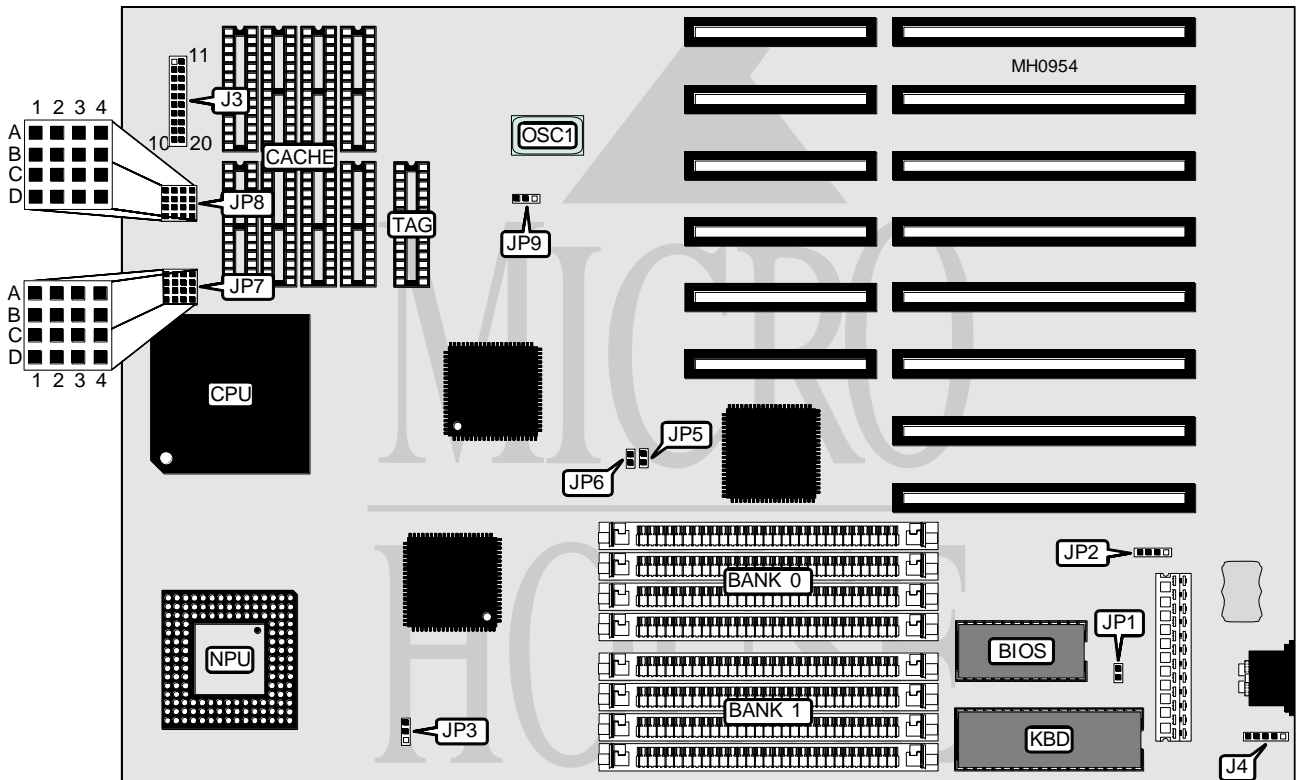


FUJIKAMA USA, INC.

80486DX-33/50MHz CONTAQ MAIN BOARD

Processor	80486SX/80487SX/80486DX
Processor Speed	16/20/25/33/50MHz
Chip Set	CONTAQ
Max. Onboard DRAM	32MB
Cache	64/256KB
BIOS	AMI
Dimensions	330mm x 218mm
I/O Options	Auxiliary keyboard connector
NPU Options	4167



CONNECTIONS			
Purpose	Location	Purpose	Location
Keylock	J3 pins 1 & 2	Turbo switch	J3 pins 15 - 17
Power LED	J3 pins 3 - 5	Reset switch	J3 pins 19 & 20
Speaker	J3 pins 7 - 10	Auxiliary keyboard	J4
Turbo LED	J3 pins 12 & 13	External battery	JP2

Continued on next page . . .

FUJIKAMA USA, INC.

80486DX-33/50MHz CONTAQ MAIN BOARD

... continued from previous page

USER CONFIGURABLE SETTINGS

Function	Jumper	Position
í Monitor type select color	JP1	Closed
Monitor type select monochrome	JP1	Open

DRAM CONFIGURATION

Size	Bank 0	Bank 1
1MB	(4) 256K x 9	NONE
2MB	(4) 256K x 9	(4) 256K x 9
4MB	(4) 1M x 9	NONE
5MB	(4) 1M x 9	(4) 256K x 9
8MB	(4) 1M x 9	(4) 1M x 9
16MB	(4) 4M x 9	NONE
17MB	(4) 4M x 9	(4) 256K x 9
20MB	(4) 4M x 9	(4) 1M x 9
32MB	(4) 4M x 9	(4) 4M x 9

CACHE CONFIGURATION

Size	Bank 0	TAG
64KB	(8) 8K x 8	(1) 8K x 8
256KB	(8) 32K x 8	(1) 32K x 8

CACHE JUMPER CONFIGURATION

Size	JP8
64KB	pins 1A & 2A, 3A & 4A, 1C & 2C, 3C & 4C closed.
256KB	pins 1B & 2B, 3B & 4B, 1D & 2D, 3D & 4D closed.

CPU TYPE CONFIGURATION

Type	JP7
80486SX	pins 1B & 2B, 3B & 4B, 1D & 2D, 3D & 4D closed.
80487SX	pins 4A & 4B, 4C & 4D, 2A & 2B, 2C & 2D closed.
80486DX	pins 4A & 4B, 4C & 4D, 1A & 1B, 1C & 1D closed.

CPU SPEED CONFIGURATION

Speed	Crystal OSC1	JP3	JP5	JP6	JP9
16MHz	32MHz	2 & 3	Open	Open	1 & 2
20MHz	40MHz	1 & 2	Open	Open	1 & 2
25MHz	25MHz	1 & 2	Closed	Open	2 & 3
33MHz	33MHz	1 & 2	Open	Closed	2 & 3
50MHz	50MHz	1 & 2	Closed	Closed	2 & 3

Note: Pins designated should be in the closed position.