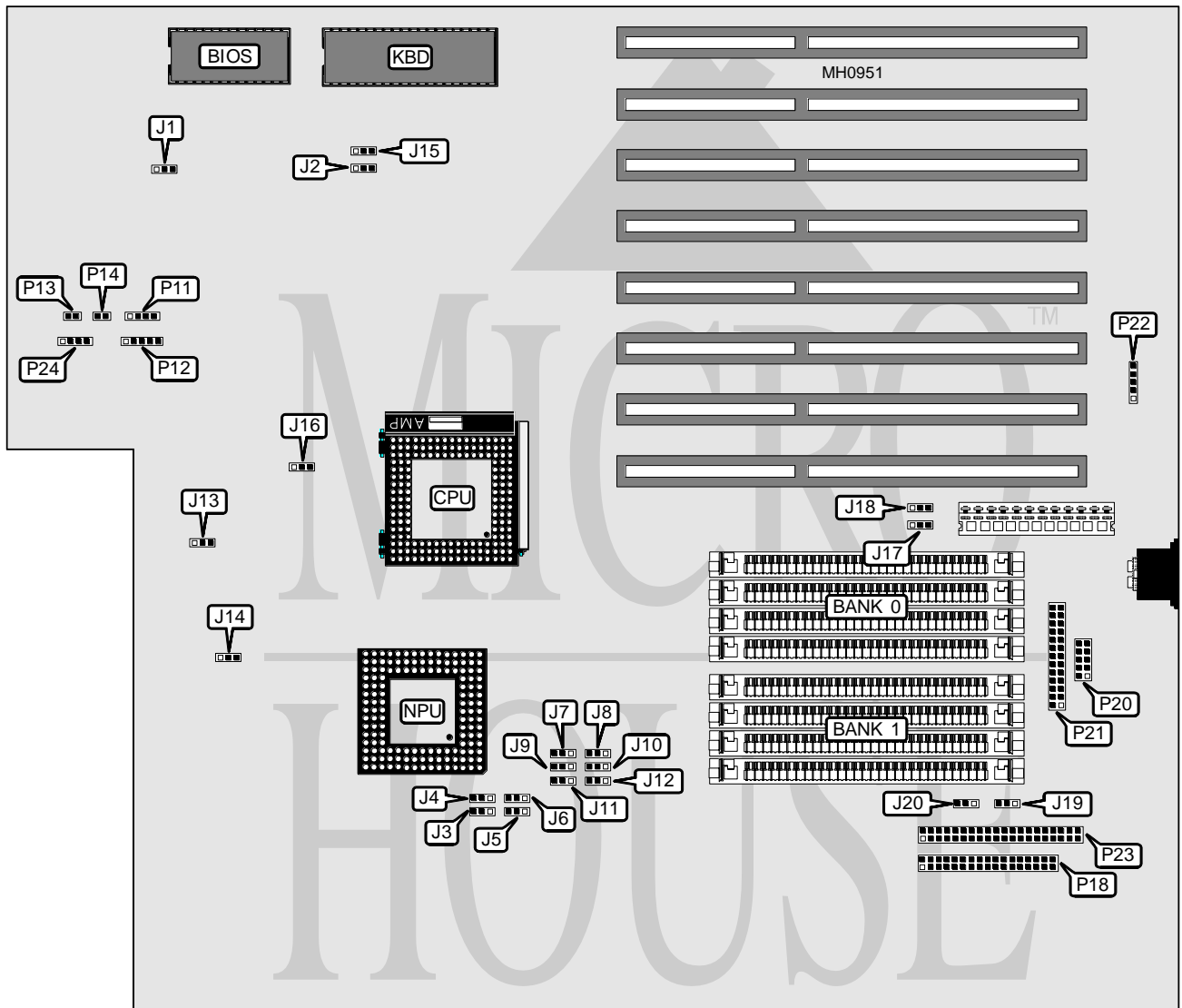


MYLEX CORPORATION MNE486 SYSTEM BOARD

Processor	80486DX
Processor Speed	25/33/50(internal)/66(internal)MHz
Chip Set	Intel
Max. Onboard DRAM	32MB
Cache	128KB
BIOS	Mylex
Dimensions	330mm x 218mm
I/O Options	Bus mouse, floppy drive interface, IDE interface, serial port, parallel port
NPU Options	4167



Continued on next page . . .

MYLEX CORPORATION

MNE486 SYSTEM BOARD

... continued from previous page

CONNECTIONS			
Purpose	Location	Purpose	Location
Speaker	P11	Serial port	P20
Power LED & keylock	P12	Parallel port	P21
Turbo LED	P13	Bus mouse	P22
Reset switch	P14	IDE interface	P23
Floppy drive interface	P18	IDE interface LED	P24

USER CONFIGURABLE SETTINGS		
Function	Jumper	Position
í External SRAM cache enabled	J1	pins 1 & 2 closed
External SRAM cache disabled	J1	Open
í Factory configured - do not alter	J2	N/A
í Factory configured - do not alter	J13	N/A
í Factory configured - do not alter	J14	N/A
í Factory configured - do not alter	J15	N/A
í Factory configured - do not alter	J16	N/A
í Serial port 1 select COM1 interrupt IRQ4 at 3F8-3FF	J17	pins 1 & 2 closed
Serial port 1 select COM2 interrupt IRQ3 at 2F8-2FF	J17	pins 2 & 3 closed
í Parallel port select LPT1 interrupt IRQ7 at 378-37F	J18	pins 1 & 2 closed
Parallel port select LPT2 interrupt IRQ5 at 278-27F	J18	pins 2 & 3 closed
í On-board interface ports enabled	J19	pins 1 & 2 closed
On-board interface ports disabled	J19	pins 2 & 3 closed
í IDE factory diagnostics disabled	J20	pins 1 & 2 closed
IDE factory diagnostics enabled	J20	Open

DRAM CONFIGURATION		
Size	Bank 0	Bank 1
1MB	(4) 256K x 9	NONE
2MB	(4) 256K x 9	(4) 256K x 9
4MB	(4) 1M x 9	NONE
8MB	(4) 1M x 9	(4) 1M x 9
16MB	(4) 4M x 9	NONE
32MB	(4) 4M x 9	(4) 4M x 9

DRAM JUMPER CONFIGURATION										
Size	J3	J4	J5	J6	J7	J8	J9	J10	J11	J12
1MB	Open	Open	Open	Open	Open	2 & 3	Open	1 & 2	1 & 2	1 & 2
2MB	1 & 2	1 & 2	1 & 2	1 & 2	Open	1 & 2	Open	1 & 2	1 & 2	2 & 3
4MB	Open	Open	Open	Open	Open	1 & 2	2 & 3	1 & 2	1 & 2	2 & 3
8MB	1 & 2	1 & 2	1 & 2	1 & 2	Open	1 & 2	1 & 2	2 & 3	1 & 2	2 & 3
16MB	Open	Open	Open	Open	2 & 3	1 & 2	1 & 2	2 & 3	1 & 2	2 & 3
32MB	1 & 2	1 & 2	1 & 2	1 & 2	1 & 2	1 & 2	1 & 2	2 & 3	2 & 3	2 & 3

Note: Pins designated should be in the closed position.