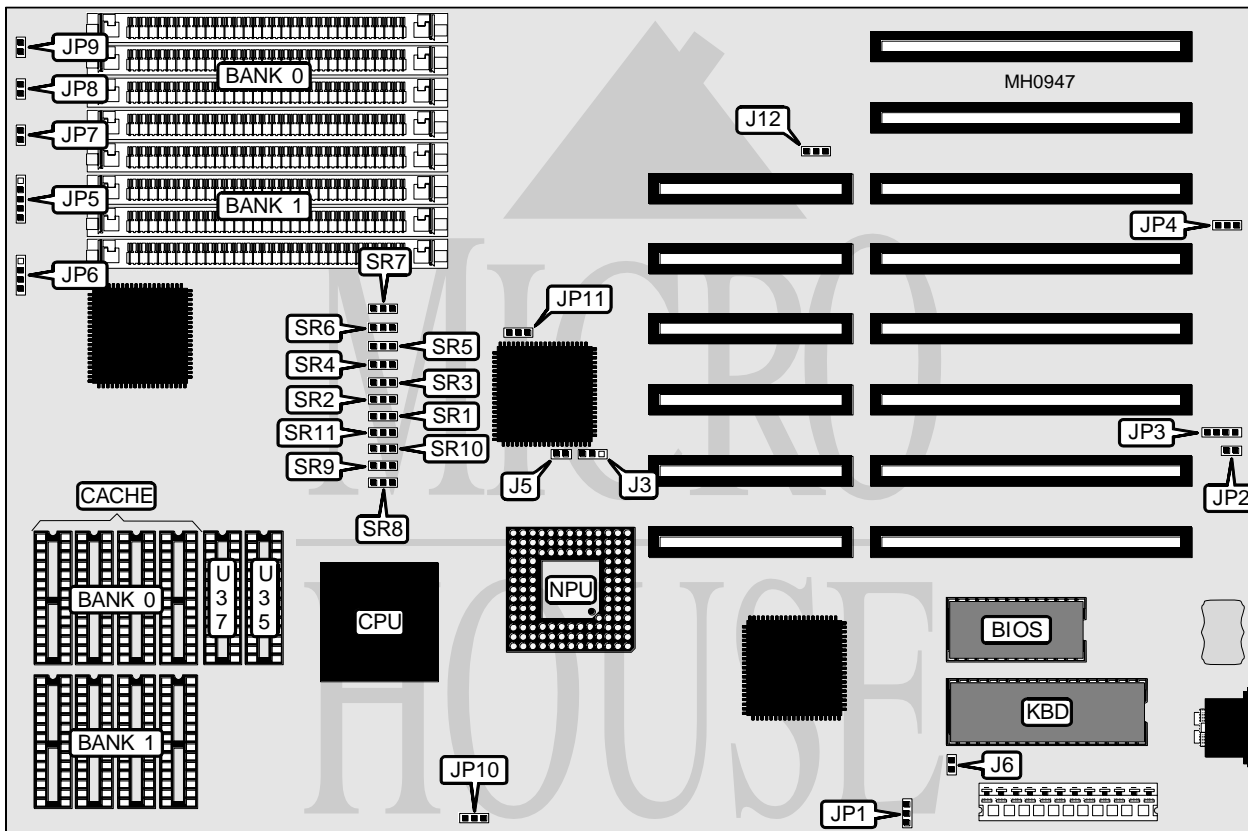


AUSTIN COMPUTER SYSTEMS

486/DLC-33 BCM

Processor	80386DX/CX486DLC
Processor Speed	33MHz
Chip Set	C & T
Max. Onboard DRAM	32MB
Cache	32/64/128/256KB
BIOS	AMI
Dimensions	330mm x 218mm
I/O Options	None
NPU Options	80387/3167



CONNECTIONS			
Purpose	Location	Purpose	Location
External battery	JP3	Reset switch	JP7
Power LED & keylock	JP5	Turbo LED	JP8
Speaker	JP6	Turbo switch	JP9

Continued on next page . . .

AUSTIN COMPUTER SYSTEMS

486/DLC-33 BCM

... continued from previous page

USER CONFIGURABLE SETTINGS		
Function	Jumper	Position
í Factory configured - do not alter	J3	Open
í Factory configured - do not alter	J5	Open
í Factory configured - do not alter	J6	Open
í Factory configured - do not alter	J12	pins 1 & 2 closed
í Monitor type select color	JP1	pins 1 & 2 closed
Monitor type select monochrome	JP1	pins 2 & 3 closed
í Internal battery enabled	JP2	Closed
Internal battery disabled	JP2	Open
í CMOS memory normal operation	JP4	pins 1 & 2 closed
CMOS memory clear	JP4	pins 2 & 3 closed
í Factory configured - do not alter	JP10	N/A

DRAM CONFIGURATION		
Size	Bank 0	Bank 1
1MB	(4) 256K x 9	NONE
2MB	(4) 256K x 9	(4) 256K x 9
4MB	(4) 1M x 9	NONE
5MB	(4) 256K x 9	(4) 1M x 9
8MB	(4) 1M x 9	(4) 1M x 9
16MB	(4) 4M x 9	NONE
32MB	(4) 4M x 9	(4) 4M x 9

DRAM JUMPER CONFIGURATION	
Size	JP11
1MB	pins 2 & 3 closed
2MB	pins 1 & 2 closed
4MB	pins 2 & 3 closed
5MB	pins 2 & 3 closed
8MB	pins 1 & 2 closed
16MB	pins 2 & 3 closed
32MB	pins 1 & 2 closed

CACHE CONFIGURATION				
Size	Bank 0	Bank 1	TAG (U35)	TAG (U37)
32KB	(4) 8K x 8	NONE	(1) 8K x 8	NONE
64KB	(4) 8K x 8	(4) 8K x 8	(1) 8K x 8	(1) 8K x 8
128KB	(4) 32K x 8	NONE	(1) 32K x 8	NONE
256KB	(4) 32K x 8	(4) 32K x 8	(1) 32K x 8	(1) 32K x 8

Continued on next page...

AUSTIN COMPUTER SYSTEMS

486/DLC-33 BCM

... continued from previous page

CACHE JUMPER CONFIGURATION						
Size	SR1	SR2	SR3	SR4	SR5	
32KB	1 & 2	1 & 2	1 & 2	1 & 2	1 & 2	
64KB	2 & 3	1 & 2	1 & 2	1 & 2	1 & 2	
128KB	2 & 3	1 & 2	1 & 2	1 & 2	2 & 3	
256KB	2 & 3	2 & 3	2 & 3	2 & 3	2 & 3	

Note: Pins designated should be in the closed position.

CACHE JUMPER CONFIGURATION (CON'T)						
Size	SR6	SR7	SR8	SR9	SR10	SR11
32KB	1 & 2	1 & 2	1 & 2	1 & 2	1 & 2	1 & 2
64KB	1 & 2	2 & 3	2 & 3	1 & 2	1 & 2	1 & 2
128KB	1 & 2	2 & 3	2 & 3	1 & 2	1 & 2	1 & 2
256KB	2 & 3	1 & 2	2 & 3	2 & 3	2 & 3	2 & 3

Note: Pins designated should be in the closed position.