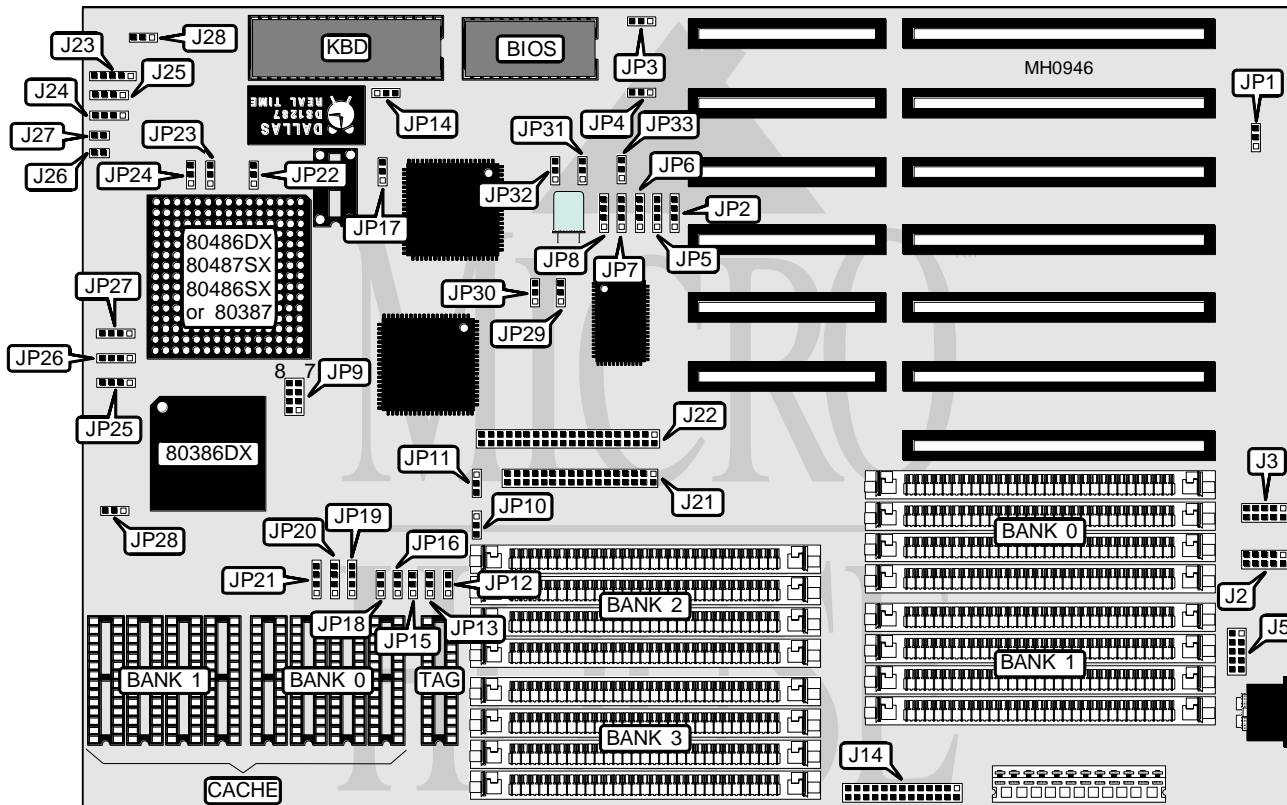


AUSTIN COMPUTER SYSTEMS PREDATOR

Processor	80386DX/80486SX/80487SX/80486DX/80486DX2
Processor Speed	20/25/33/40/50(internal)/50/66(internal)MHz
Chip Set	Symphony
Max. Onboard DRAM	64MB
Cache	64/128/256KB
BIOS	AMI
Dimensions	330mm x 218mm
I/O Options	Floppy drive interface, IDE interface, parallel port, serial ports (2)
NPU Options	80387



CONNECTIONS

Purpose	Location	Purpose	Location
Serial port 2	J2	Turbo switch	J24 pins 1 & 2
Serial port 1	J3	Turbo LED	J24 pins 3 & 4
Mouse port	J5	Speaker	J25
Parallel port	J14	Reset switch	J26
Floppy interface	J21	IDE interface LED	J27
IDE interface	J22	CPU speed LED	J28
Power LED & keylock	J23		

Continued on next page . . .

AUSTIN COMPUTER SYSTEMS

PREDATOR

... continued from previous page

USER CONFIGURABLE SETTINGS		
Function	Jumper	Position
í IRQ12 select mouse port	JP1	pins 1 & 2 closed
IRQ12 disabled	JP1	pins 2 & 3 closed
IRQ5 select serial port 1	JP2	pins 1 & 2 closed
IRQ5 select serial port 2	JP2	pins 2 & 3 closed
í IRQ5 disabled	JP2	pins 3 & 4 closed
í Flash BIOS write enabled	JP3	pins 1 & 2 closed
Flash BIOS write disabled	JP3	pins 2 & 3 closed
í BIOS select standard address	JP4	pins 2 & 3 closed
BIOS select Flash address	JP4	pins 1 & 2 closed
í IRQ4 select serial port 1	JP5	pins 1 & 2 closed
IRQ4 select serial port 2	JP5	pins 2 & 3 closed
IRQ4 disabled	JP5	pins 3 & 4 closed
IRQ3 select serial port 1	JP6	pins 1 & 2 closed
í IRQ3 select serial port 2	JP6	pins 2 & 3 closed
IRQ3 disabled	JP6	pins 3 & 4 closed
IRQ9 select serial port 1	JP7	pins 1 & 2 closed
IRQ9 select serial port 2	JP7	pins 2 & 3 closed
í IRQ9 disabled	JP7	pins 3 & 4 closed
í Parallel port IRQ select IRQ7	JP8	pins 1 & 2 closed
Parallel port IRQ select IRQ5	JP8	pins 2 & 3 closed
Parallel port IRQ select no interrupt	JP8	pins 3 & 4 closed
í Monitor type select color	JP14	pins 1 & 2 closed
Monitor type select monochrome	JP14	pins 2 & 3 closed
í Real time clock select normal operation	JP17	pins 1 & 2 closed
Real time clock reset	JP17	pins 2 & 3 closed
í NPU mode select synchronous with CPU	JP22	pins 1 & 2 closed
NPU mode select asynchronous with CPU	JP22	pins 2 & 3 closed
í Factory configured - do not alter	JP28	pins 2 & 3 closed
í Expansion bus enabled	JP33	pins 1 & 2 closed
Expansion bus disabled	JP33	pins 2 & 3 closed

DRAM CONFIGURATION				
Size	Bank 0	Bank 1	Bank 2	Bank 3
1MB	(4) 256K x 9	NONE	NONE	NONE
2MB	(4) 256K x 9	(4) 256K x 9	NONE	NONE
3MB	(4) 256K x 9	(4) 256K x 9	(4) 256K x 9	NONE
4MB	(4) 256K x 9	(4) 256K x 9	(4) 256K x 9	(4) 256K x 9
4MB	(4) 1M x 9	NONE	NONE	NONE
5MB	(4) 1M x 9	(4) 256K x 9	NONE	NONE
6MB	(4) 1M x 9	(4) 256K x 9	(4) 256K x 9	NONE
7MB	(4) 1M x 9	(4) 256K x 9	(4) 256K x 9	(4) 256K x 9
8MB	(4) 1M x 9	(4) 1M x 9	NONE	NONE
9MB	(4) 1M x 9	(4) 1M x 9	(4) 256K x 9	NONE

Continued on next page . . .

AUSTIN COMPUTER SYSTEMS PREDATOR

... continued from previous page

DRAM CONFIGURATION (CON'T)				
Size	Bank 0	Bank 1	Bank 2	Bank 3
10MB	(4) 1M x 9	(4) 1M x 9	(4) 256K x 9	(4) 256K x 9
12MB	(4) 1M x 9	(4) 1M x 9	(4) 1M x 9	NONE
16MB	(4) 1M x 9	(4) 1M x 9	(4) 1M x 9	(4) 1M x 9
16MB	(4) 4M x 9	NONE	NONE	NONE
17MB	(4) 4M x 9	(4) 256K x 9	NONE	NONE
18MB	(4) 4M x 9	(4) 256K x 9	(4) 256K x 9	NONE
19MB	(4) 4M x 9	(4) 256K x 9	(4) 256K x 9	(4) 256K x 9
20MB	(4) 4M x 9	(4) 1M x 9	NONE	NONE
21MB	(4) 4M x 9	(4) 1M x 9	(4) 256K x 9	NONE
22MB	(4) 4M x 9	(4) 1M x 9	(4) 256K x 9	(4) 256K x 9
24MB	(4) 4M x 9	(4) 1M x 9	(4) 1M x 9	NONE
28MB	(4) 4M x 9	(4) 1M x 9	(4) 1M x 9	(4) 1M x 9
32MB	(4) 4M x 9	(4) 4M x 9	NONE	NONE
33MB	(4) 4M x 9	(4) 4M x 9	(4) 256K x 9	NONE
34MB	(4) 4M x 9	(4) 4M x 9	(4) 256K x 9	(4) 256K x 9
36MB	(4) 4M x 9	(4) 4M x 9	(4) 1M x 9	NONE
37MB	(4) 256K x 9	(4) 1M x 9	(4) 4M x 9	(4) 4M x 9
40MB	(4) 4M x 9	(4) 4M x 9	(4) 1M x 9	(4) 1M x 9
48MB	(4) 4M x 9	(4) 4M x 9	(4) 4M x 9	NONE
49MB	(4) 256K x 9	(4) 4M x 9	(4) 4M x 9	(4) 4M x 9
52MB	(4) 4M x 9	(4) 1M x 9	(4) 4M x 9	(4) 4M x 9
64MB	(4) 4M x 9	(4) 4M x 9	(4) 4M x 9	(4) 4M x 9

CACHE CONFIGURATION			
Size	Bank 0	Bank 1	TAG
64KB	(4) 8K x 8	(4) 8K x 8	(1) 8K x 8
128KB	(4) 32K x 8	NONE	(1) 32K x 8
256KB	(4) 32K x 8	(4) 32K x 8	(1) 32K x 8

CACHE JUMPER CONFIGURATION								
Size	JP12	JP13	JP15	JP16	JP18	JP19	JP20	JP21
64KB	1 & 2	1 & 2	1 & 2	1 & 2	1 & 2	1 & 2	1 & 2	1 & 2
128KB	2 & 3	2 & 3	2 & 3	2 & 3	2 & 3	2 & 3	2 & 3	2 & 3
256KB	1 & 2	1 & 2	1 & 2	1 & 2	1 & 2	3 & 4	3 & 4	3 & 4

Note: Pins designated should be in the closed position.

Continued on next page ...

AUSTIN COMPUTER SYSTEMS

PREDATOR

... continued from previous page

CPU TYPE CONFIGURATION WITH 64KB CACHE										
CPU type	CPU speed	JP9	JP10	JP11	JP23		JP26		JP29	
					JP24	JP25	JP27	JP30	JP31	JP32
80386DX	25MHz	1 & 2	1 & 2	1 & 2	1 & 2	N/A	N/A	2 & 3	1 & 2	
80386DX	33MHz	7 & 8	1 & 2	1 & 2	1 & 2	N/A	N/A	2 & 3	1 & 2	
80386DX	40MHz	3 & 4	1 & 2	1 & 2	1 & 2	N/A	N/A	2 & 3	1 & 2	
80486SX	20MHz	5 & 6	1 & 2	1 & 2	1 & 2	3 & 4	3 & 4	1 & 2	2 & 3	
80486SX	25MHz	1 & 2	1 & 2	1 & 2	1 & 2	3 & 4	3 & 4	1 & 2	2 & 3	
80487SX	20MHz	5 & 6	1 & 2	1 & 2	1 & 2	2 & 3	2 & 3	1 & 2	2 & 3	
80487SX	25MHz	1 & 2	1 & 2	1 & 2	1 & 2	2 & 3	2 & 3	1 & 2	2 & 3	
80486DX	25MHz	1 & 2	1 & 2	1 & 2	1 & 2	1 & 2	1 & 2	1 & 2	2 & 3	
80486DX	33MHz	7 & 8	1 & 2	1 & 2	1 & 2	1 & 2	1 & 2	1 & 2	2 & 3	
80486DX	50MHz	1 & 2	2 & 3	2 & 3	2 & 3	1 & 2	1 & 2	1 & 2	2 & 3	

Note: Speeds indicate the external speed of the CPU. Pins designated should be in the closed position.

CPU TYPE CONFIGURATION WITH 128KB CACHE										
CPU type	CPU speed	JP9	JP10	JP11	JP23		JP26		JP29	
					JP24	JP25	JP27	JP30	JP31	JP32
80386DX	25MHz	1 & 2	1 & 2	1 & 2	1 & 2	N/A	N/A	1 & 2	1 & 2	
80386DX	33MHz	7 & 8	1 & 2	1 & 2	1 & 2	N/A	N/A	1 & 2	1 & 2	
80386DX	40MHz	3 & 4	1 & 2	1 & 2	1 & 2	N/A	N/A	1 & 2	1 & 2	
80486SX	20MHz	5 & 6	1 & 2	1 & 2	1 & 2	3 & 4	3 & 4	1 & 2	2 & 3	
80486SX	25MHz	1 & 2	1 & 2	1 & 2	1 & 2	3 & 4	3 & 4	1 & 2	2 & 3	
80487SX	20MHz	5 & 6	1 & 2	1 & 2	1 & 2	2 & 3	2 & 3	1 & 2	2 & 3	
80487SX	25MHz	1 & 2	1 & 2	1 & 2	1 & 2	2 & 3	2 & 3	1 & 2	2 & 3	
80486DX	25MHz	1 & 2	1 & 2	1 & 2	1 & 2	1 & 2	1 & 2	1 & 2	2 & 3	
80486DX	33MHz	7 & 8	1 & 2	1 & 2	1 & 2	1 & 2	1 & 2	1 & 2	2 & 3	
80486DX	50MHz	1 & 2	2 & 3	2 & 3	2 & 3	1 & 2	1 & 2	1 & 2	2 & 3	

Note: Speeds indicate the external speed of the CPU. Pins designated should be in the closed position.

CPU TYPE CONFIGURATION WITH 256KB CACHE										
CPU type	CPU speed	JP9	JP10	JP11	JP23		JP26		JP29	
					JP24	JP25	JP27	JP30	JP31	JP32
80386DX	25MHz	1 & 2	1 & 2	1 & 2	1 & 2	N/A	N/A	2 & 3	1 & 2	
80386DX	33MHz	7 & 8	1 & 2	1 & 2	1 & 2	N/A	N/A	2 & 3	1 & 2	
80386DX	40MHz	3 & 4	1 & 2	1 & 2	1 & 2	N/A	N/A	2 & 3	1 & 2	
80486SX	20MHz	5 & 6	1 & 2	1 & 2	1 & 2	3 & 4	3 & 4	1 & 2	2 & 3	
80486SX	25MHz	1 & 2	1 & 2	1 & 2	1 & 2	3 & 4	3 & 4	1 & 2	2 & 3	
80487SX	20MHz	5 & 6	1 & 2	1 & 2	1 & 2	2 & 3	2 & 3	1 & 2	2 & 3	
80487SX	25MHz	1 & 2	1 & 2	1 & 2	1 & 2	2 & 3	2 & 3	1 & 2	2 & 3	
80486DX	25MHz	1 & 2	1 & 2	1 & 2	1 & 2	1 & 2	1 & 2	1 & 2	2 & 3	
80486DX	33MHz	7 & 8	1 & 2	1 & 2	1 & 2	1 & 2	1 & 2	1 & 2	2 & 3	
80486DX	50MHz	1 & 2	1 & 2	2 & 3	2 & 3	1 & 2	1 & 2	1 & 2	2 & 3	

Note: Speeds indicate the external speed of the CPU. Pins designated should be in the closed position.