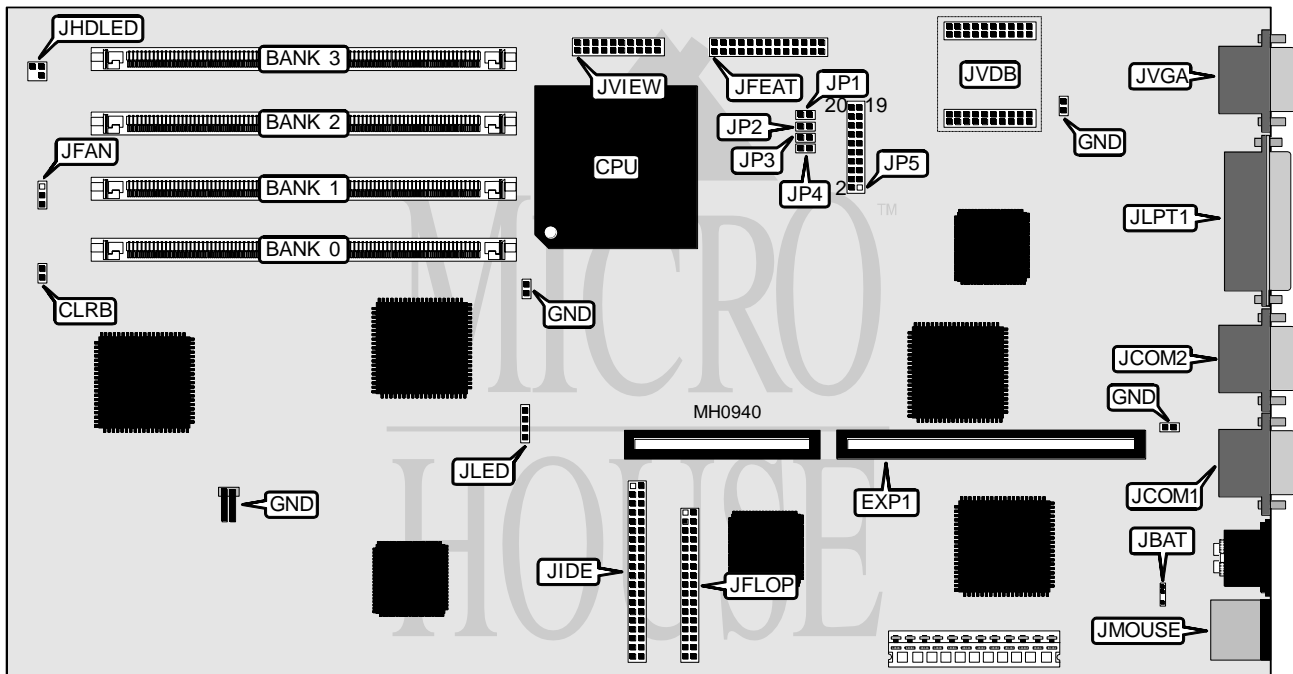


DELL COMPUTER CORPORATION SYSTEM 486P

Processor	80486DX
Processor Speed	16/20/25/33MHz
Chip Set	VLSI
Max. Onboard DRAM	64MB
Cache	None
BIOS	Phoenix
Dimensions	349mm x 185mm
I/O Options	Bus mouse port, floppy interface, IDE interface, parallel port, riser card slot, serial ports (2), video upgrade socket, VGA port
NPU Options	None



CONNECTIONS			
Purpose	Location	Purpose	Location
16-bit riser card	EXP1	Auxiliary ground points	GND
IDE interface LED	JHDLED	IDE interface	JIDE
External battery	JBAT	Power LED & turbo LED	JLED
Serial port 1	JCOM1	Parallel port	JLPT1
Serial port 2	JCOM2	Bus mouse port	JMOUSE
Cooling fan power	JFAN	VGA memory upgrade socket	JVDB
VGA pass-through	JFEAT	Front panel status LCD	JVIEW
Floppy drive interface	JFLOP	VGA port	JVGGA

Continued on next page . . .

DELL COMPUTER CORPORATION

SYSTEM 486P

... continued from previous page

USER CONFIGURABLE SETTINGS		
Function	Jumper	Position
í VGA interrupt request select none	JP5 pins 1 & 2	Closed
VGA interrupt request select IRQ9	JP5 pins 1 & 2	Open
í Monitor type select color	JP5 pins 3 & 4	Closed
Monitor type select monochrome	JP5 pins 3 & 4	Open
í Factory configured - do not alter	JP5 pins 5 & 6	Open
í Factory configured - do not alter	JP5 pins 7 & 8	Open
í Password check enabled	JP5 pins 9 & 10	Closed
Password check disabled	JP5 pins 9 & 10	Open
í Mouse port enabled (uses IRQ12)	JP5 pins 11 & 12	Closed
Mouse port disabled (IRQ12 not used)	JP5 pins 11 & 12	Open
í IOCHRDY signal disabled to IDE drive(s)	JP5 pins 13 & 14	Closed
	JP5 pins 15 & 16	Open
IOCHRDY signal enabled to IDE drive(s)	JP5 pins 13 & 14	Open
	JP5 pins 15 & 16	Closed
í Bus wait states select none	JP5 pins 17 & 18	Closed
Bus wait state select one	JP5 pins 17 & 18	Open
í Factory configured - do not alter	JP5 pins 19 & 20	Open
í Factory configured - do not alter	CLRB	Open

DRAM CONFIGURATION				
Size	Bank 0	Bank 1	Bank 2	Bank 3
1MB	(1) 256K x 36	NONE	NONE	NONE
2MB	(1) 256K x 36	(1) 256K x 36	NONE	NONE
3MB	(1) 256K x 36	(1) 256K x 36	(1) 256K x 36	NONE
4MB	(1) 256K x 36	(1) 256K x 36	(1) 256K x 36	(1) 256K x 36
4MB	(1) 1M x 36	NONE	NONE	NONE
5MB	(1) 1M x 36	(1) 256K x 36	NONE	NONE
6MB	(1) 1M x 36	(1) 256K x 36	(1) 256K x 36	NONE
7MB	(1) 1M x 36	(1) 256K x 36	(1) 256K x 36	(1) 256K x 36
8MB	(1) 1M x 36	(1) 1M x 36	NONE	NONE
9MB	(1) 1M x 36	(1) 1M x 36	(1) 256K x 36	NONE
10MB	(1) 1M x 36	(1) 1M x 36	(1) 256K x 36	(1) 256K x 36
12MB	(1) 1M x 36	(1) 1M x 36	(1) 1M x 36	NONE
13MB	(1) 1M x 36	(1) 1M x 36	(1) 1M x 36	(1) 256K x 36
16MB	(1) 1M x 36	(1) 1M x 36	(1) 1M x 36	(1) 1M x 36
16MB	(1) 4M x 36	NONE	NONE	NONE
17MB	(1) 4M x 36	(1) 256K x 36	NONE	NONE
18MB	(1) 4M x 36	(1) 256K x 36	(1) 256K x 36	NONE
19MB	(1) 4M x 36	(1) 256K x 36	(1) 256K x 36	(1) 256K x 36
20MB	(1) 4M x 36	(1) 1M x 36	NONE	NONE
21MB	(1) 4M x 36	(1) 1M x 36	(1) 256K x 36	NONE
22MB	(1) 4M x 36	(1) 1M x 36	(1) 256K x 36	(1) 256K x 36
24MB	(1) 4M x 36	(1) 1M x 36	(1) 1M x 36	NONE

Continued on next page...

DELL COMPUTER CORPORATION

SYSTEM 486P

... continued from previous page

DRAM CONFIGURATION (CON'T)				
Size	Bank 0	Bank 1	Bank 2	Bank 3
25MB	(1) 4M x 36	(1) 1M x 36	(1) 1M x 36	(1) 256K x 36
28MB	(1) 4M x 36	(1) 1M x 36	(1) 1M x 36	(1) 1M x 36
32MB	(1) 4M x 36	(1) 4M x 36	NONE	NONE
33MB	(1) 4M x 36	(1) 4M x 36	(1) 256K x 36	NONE
34MB	(1) 4M x 36	(1) 4M x 36	(1) 256K x 36	(1) 256K x 36
36MB	(1) 4M x 36	(1) 4M x 36	(1) 1M x 36	NONE
37MB	(1) 4M x 36	(1) 4M x 36	(1) 1M x 36	(1) 256K x 36
40MB	(1) 4M x 36	(1) 4M x 36	(1) 1M x 36	(1) 1M x 36
48MB	(1) 4M x 36	(1) 4M x 36	(1) 4M x 36	NONE
49MB	(1) 4M x 36	(1) 4M x 36	(1) 4M x 36	(1) 256K x 36
52MB	(1) 4M x 36	(1) 4M x 36	(1) 4M x 36	(1) 1M x 36
64MB	(1) 4M x 36	(1) 4M x 36	(1) 4M x 36	(1) 4M x 36

CPU SPEED CONFIGURATION				
Speed	JP1	JP2	JP3	JP4
16MHz	Closed	Open	Open	Open
20MHz	Open	Closed	Open	Open
25MHz	Open	Open	Closed	Open
33MHz	Open	Open	Open	Closed