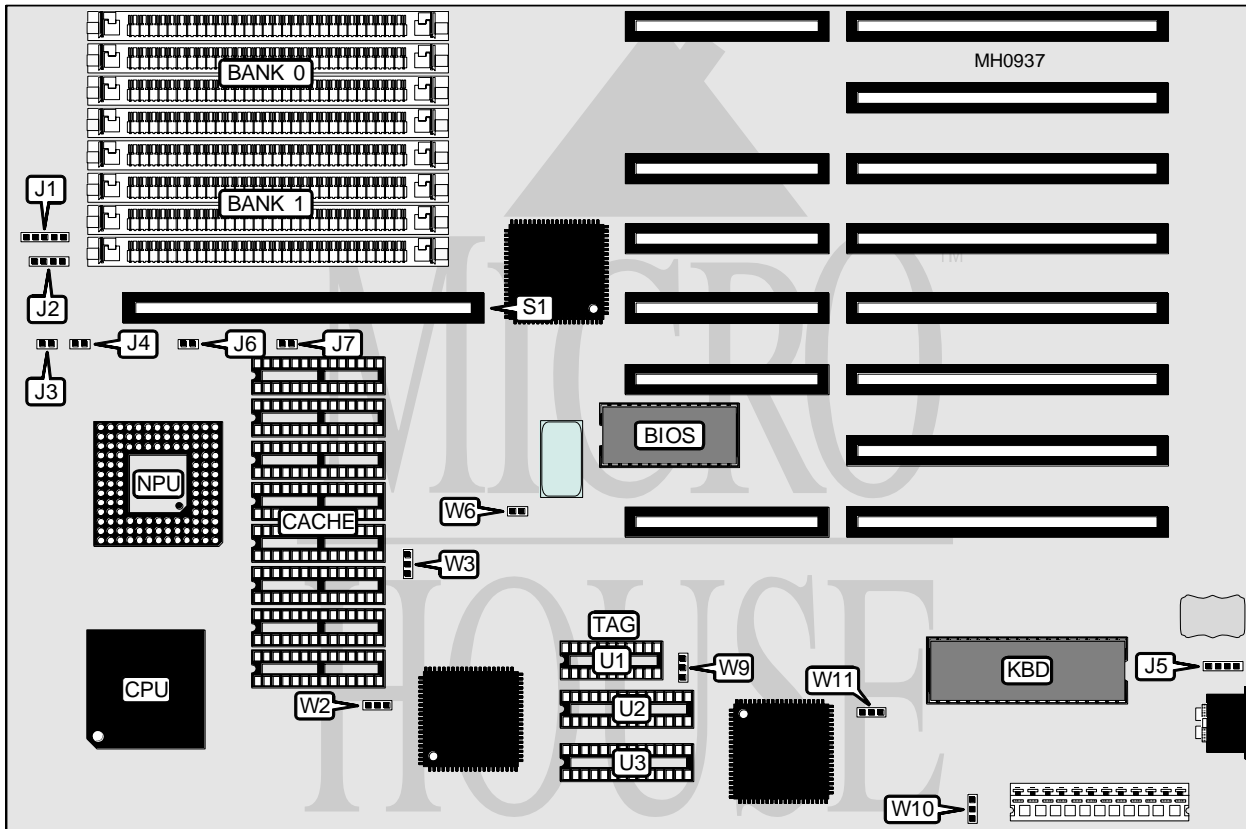


TOP MICROSYSTEMS, INC.

PEAK 386 CACHE

Processor	80386DX
Processor Speed	25/33MHz
Chip Set	C & T PEAK DM
Max. Onboard DRAM	32MB
Cache	64KB
BIOS	AMI
Dimensions	330mm x 218mm
I/O Options	32-bit external memory card slot
NPU Options	80387/3167



CONNECTIONS			
Purpose	Location	Purpose	Location
Power LED & keylock	J1	External battery	J5
Speaker	J2	Reset switch	J7
Turbo LED	J3	32-bit external memory card	S1
Turbo switch	J4		

Continued on next page . . .

TOP MICROSYSTEMS, INC.

PEAK 386 CACHE

... continued from previous page

USER CONFIGURABLE SETTINGS		
Function	Jumper	Position
í Factory configured - do not alter	J6	N/A
í Factory configured - do not alter	W2	N/A
í Factory configured - do not alter	W3	N/A
í Factory configured - do not alter	W6	N/A
í Factory configured - do not alter	W9	N/A
í CMOS memory normal operation	W10	pins 2 & 3 closed
CMOS memory clear	W10	pins 1 & 2 closed
í Monitor type select color	W11	Closed
Monitor type select monochrome	W11	Open

DRAM CONFIGURATION		
Size	Bank 0	Bank 1
1MB	(4) 256K x 9	NONE
2MB	(4) 256K x 9	(4) 256K x 9
4MB	(4) 1M x 9	NONE
5MB	(4) 1M x 9	(4) 256K x 9
8MB	(4) 1M x 9	(4) 1M x 9
16MB	(4) 4M x 9	NONE
32MB	(4) 4M x 9	(4) 4M x 9

CACHE CONFIGURATION			
Size	Bank 0	TAG (U1)	TAG (U2 & U3)
64KB	(8) 8K x 8	(1) 16K x 4	(2) 8K x 8