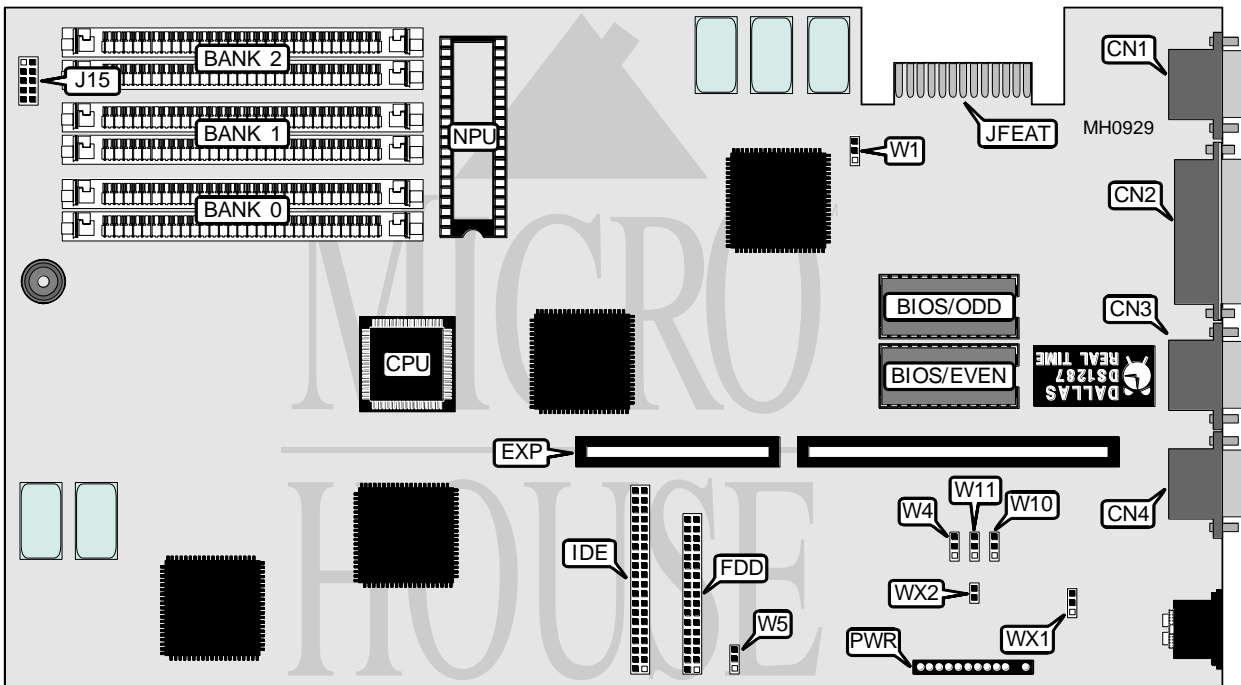


DELL COMPUTER CORPORATION SYSTEM 210

Processor 80286
Processor Speed 6/12MHz
Chip Set VLSI
Max. Onboard DRAM 6MB
Cache None
BIOS Phoenix
Dimensions 342mm x 185mm
I/O Options Floppy interface, IDE interface, parallel port, riser card slot, serial ports (2), VGA port
NPU Options 80287



CONNECTIONS			
Purpose	Location	Purpose	Location
VGA port	CN1	Floppy drive interface	FDD
Parallel port	CN2	IDE interface	IDE
Serial port 2	CN3	Turbo LED & keylock	J15
Serial port 1	CN4	VGA pass-through	JFEAT
16-bit riser card	EXP	DC power	PWR

Continued on next page . . .

DELL COMPUTER CORPORATION

SYSTEM 210

... continued from previous page

USER CONFIGURABLE SETTINGS		
Function	Jumper	Position
í VGA interface controls video output	W1	pins 2 & 3 closed
External card controls video via feature connector (JFEAT)	W1	pins 1 & 2 closed
í Floppy interface enabled	W4	pins 2 & 3 closed
Floppy interface disabled	W4	pins 1 & 2 closed
í IDE drive(s) do not use tri-state IRQ14	W5	pins 2 & 3 closed
IDE drive(s) use tri-state IRQ14	W5	pins 1 & 2 closed
í IDE interface enabled	W10	pins 2 & 3 closed
IDE interface disabled	W10	pins 1 & 2 closed
í VGA interface enabled	W11	pins 2 & 3 closed
VGA interface disabled	W11	pins 1 & 2 closed
í Monitor type select color	WX1	pins 2 & 3 closed
Monitor type select monochrome	WX1	pins 1 & 2 closed
í VGA interrupt request select none	WX2	Closed
VGA interrupt request select IRQ9	WX2	Open

DRAM CONFIGURATION			
Size	Bank 0	Bank 1	Bank 2
512KB	(2) 256K x 9	NONE	NONE
1MB	(2) 256K x 9	(2) 256K x 9	(2) 64K x 9
1.5MB	(2) 256K x 9	(2) 256K x 9	(2) 256K x 9
2MB	(2) 1M x 9	NONE	NONE
2.5MB	(2) 1M x 9	(2) 256K x 9	NONE
2.6MB	(2) 1M x 9	(2) 256K x 9	(2) 64K x 9
3MB	(2) 1M x 9	(2) 256K x 9	(2) 256K x 9
4MB	(2) 1M x 9	(2) 1M x 9	NONE
4.5MB	(2) 1M x 9	(2) 1M x 9	(2) 256K x 9
6MB	(2) 1M x 9	(2) 1M x 9	(2) 1M x 9