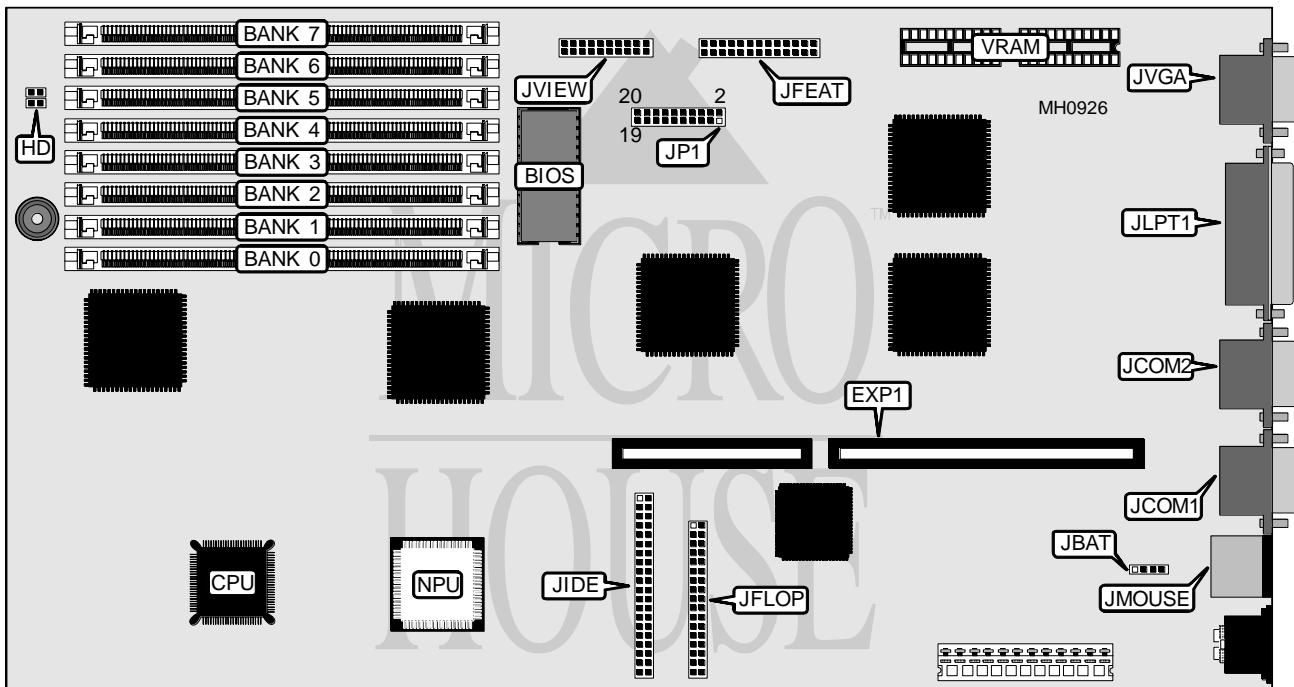


DELL COMPUTER CORPORATION SYSTEM 316SX-CR, 325SX

Processor 80386SX
Processor Speed 16/25MHz
Chip Set VLSI
Max. Onboard DRAM 8MB
Cache None
BIOS AMI
Dimensions 342mm x 185mm
I/O Options Bus mouse, floppy interface, IDE interface, parallel port, riser card slot, serial ports (2), VGA port
NPU Options 80387SX



CONNECTIONS			
Purpose	Location	Purpose	Location
16-bit riser card	EXP1	IDE interface	JIDE
IDE interface LED	HD	Parallel port	JLPT1
External battery	JBAT	Bus mouse port	JMOUSE
Serial port 1	JCOM1	Reset switch	JP1/pins 19 & 20
Serial port 2	JCOM2	Front panel status LCD	JVIEW
VGA pass-through	JFEAT	VGA port	JVGA
Floppy drive interface	JFLOP		

Continued on next page . . .

DELL COMPUTER CORPORATION

SYSTEM 316SX-CR, 325SX

... continued from previous page

USER CONFIGURABLE SETTINGS		
Function	JP1	Position
í Factory test disabled	pins 1 & 2	Open
Factory test enabled	pins 1 & 2	Closed
í Monitor type select color	pins 3 & 4	Closed
Monitor type select monochrome	pins 3 & 4	Open
í Password check enabled	pins 5 & 6	Closed
Password check disabled	pins 5 & 6	Open
í Late revision of IBM 5250 type network card installed	pins 7 & 8	Open
Early revision of IBM 5250 type network card installed	pins 7 & 8	Closed
í Factory configured - do not alter	pins 9 & 10	Open
í Factory configured - do not alter	pins 11 & 12	Closed
í Factory configured - do not alter	pins 13 & 14	Closed
í Monitor type select standard VGA	pins 15 & 16	Open
Monitor type select multifrequency (MultiSync) VGA	pins 15 & 16	Closed
í VGA interface enabled	pins 17 & 18	Closed
VGA interface disabled	pins 17 & 18	Open

DRAM CONFIGURATION				
Size	Bank 0	Bank 1	Bank 2	Bank 3
1MB	(1) 256K x 36	NONE	NONE	NONE
2MB	(1) 256K x 36	(1) 256K x 36	NONE	NONE
3MB	(1) 256K x 36	(1) 256K x 36	(1) 256K x 36	NONE
4MB	(1) 256K x 36	(1) 256K x 36	(1) 256K x 36	(1) 256K x 36
4MB	(1) 1M x 36	NONE	NONE	NONE
5MB	(1) 1M x 36	(1) 256K x 36	NONE	NONE
6MB	(1) 1M x 36	(1) 256K x 36	(1) 256K x 36	NONE
7MB	(1) 1M x 36	(1) 256K x 36	(1) 256K x 36	(1) 256K x 36
8MB	(1) 1M x 36	(1) 1M x 36	NONE	NONE
9MB	(1) 1M x 36	(1) 1M x 36	(1) 256K x 36	NONE
10MB	(1) 1M x 36	(1) 1M x 36	(1) 256K x 36	(1) 256K x 36
12MB	(1) 1M x 36	(1) 1M x 36	(1) 1M x 36	NONE
13MB	(1) 1M x 36	(1) 1M x 36	(1) 1M x 36	(1) 256K x 36
16MB	(1) 1M x 36	(1) 1M x 36	(1) 1M x 36	(1) 1M x 36

VRAM CONFIGURATION	
Size	Bank 0
256KB	NONE
512KB	(2) 44256