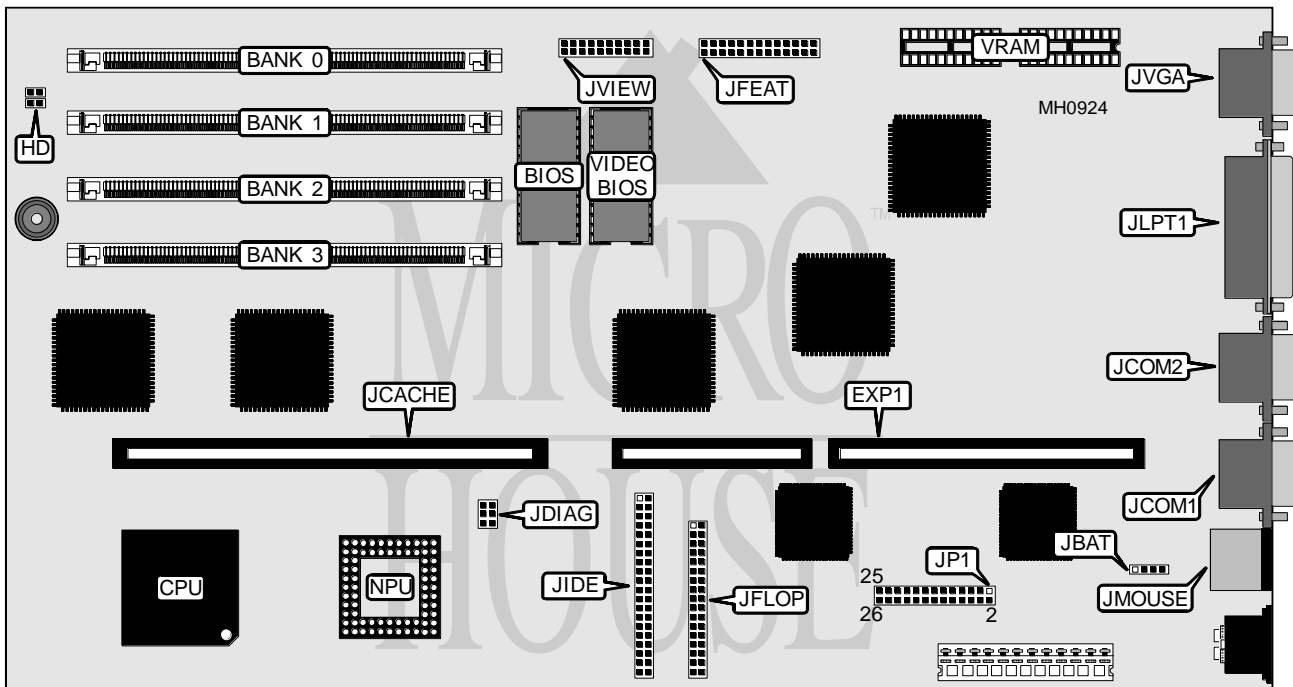


# DELL COMPUTER CORPORATION SYSTEM 325 P

<b>Processor</b>	80386DX
<b>Processor Speed</b>	25MHz
<b>Chip Set</b>	VLSI
<b>Max. Onboard DRAM</b>	16MB
<b>Cache</b>	None (32KB on optional cache card)
<b>BIOS</b>	AMI
<b>Dimensions</b>	342mm x 185mm
<b>I/O Options</b>	Bus mouse, cache card/shunt card slot, floppy interface, IDE interface, parallel port, riser card slot, serial ports (2), VGA port
<b>NPU Options</b>	80387



CONNECTIONS			
Purpose	Location	Purpose	Location
16-bit riser card	EXP1	VGA pass-through	JFEAT
IDE interface LED	HD	Floppy drive interface	JFLOP
External battery	JBAT	IDE interface	JIDE
Proprietary cache card/shunt card	JCACHE	Parallel port	JLPT1
Serial port 1	JCOM1	Bus mouse port	JMOUSE
Serial port 2	JCOM2	Front panel status LCD	JVIEW
Factory diagnostic interface	JDIAG	VGA port	JVGA

Continued on next page . . .

# DELL COMPUTER CORPORATION

## SYSTEM 325P

... continued from previous page

USER CONFIGURABLE SETTINGS		
Function	JP1	Position
í Factory configured - do not alter	pins 1 & 2	Open
í Monitor type select color	pins 3 & 4	Closed
Monitor type select monochrome	pins 3 & 4	Open
í Factory test disabled	pins 5 & 6	Open
Factory test enabled	pins 5 & 6	Closed
í Password check enabled	pins 7 & 8	Closed
Password check disabled	pins 7 & 8	Open
í IDE drives installed select one (on-board IDE port only)	pins 9 & 10	Closed
IDE drives installed select two (on-board IDE port only)	pins 9 & 10	Open
í IDE port enabled	pins 11 & 12	Open
IDE port disabled	pins 11 & 12	Closed
í Monitor type select standard VGA	pins 13 & 14	Open
Monitor type select multifrequency (MultiSync) VGA	pins 13 & 14	Closed
í VGA interrupt request select none	pins 15 & 16	Open
VGA interrupt request select IRQ9	pins 15 & 16	Closed
í IOCHRDY signal disabled to IDE drive(s)	pins 17 & 18	Closed
	pins 19 & 20	Open
IOCHRDY signal enabled to IDE drive(s)	pins 17 & 18	Open
	pins 19 & 20	Closed
í VGA interface enabled	pins 21 & 22	Closed
VGA interface disabled	pins 21 & 22	Open
í Factory configured - do not alter	pins 23 & 24	Open
í Factory configured - do not alter	pins 25 & 26	Open

DRAM CONFIGURATION				
Size	Bank 0	Bank 1	Bank 2	Bank 3
1MB	(1) 256K x 36	NONE	NONE	NONE
2MB	(1) 256K x 36	(1) 256K x 36	NONE	NONE
3MB	(1) 256K x 36	(1) 256K x 36	(1) 256K x 36	NONE
4MB	(1) 256K x 36	(1) 256K x 36	(1) 256K x 36	(1) 256K x 36
4MB	(1) 1M x 36	NONE	NONE	NONE
5MB	(1) 1M x 36	(1) 256K x 36	NONE	NONE
6MB	(1) 1M x 36	(1) 256K x 36	(1) 256K x 36	NONE
7MB	(1) 1M x 36	(1) 256K x 36	(1) 256K x 36	(1) 256K x 36
8MB	(1) 1M x 36	(1) 1M x 36	NONE	NONE
9MB	(1) 1M x 36	(1) 1M x 36	(1) 256K x 36	NONE
10MB	(1) 1M x 36	(1) 1M x 36	(1) 256K x 36	(1) 256K x 36
12MB	(1) 1M x 36	(1) 1M x 36	(1) 1M x 36	NONE
13MB	(1) 1M x 36	(1) 1M x 36	(1) 1M x 36	(1) 256K x 36
16MB	(1) 1M x 36	(1) 1M x 36	(1) 1M x 36	(1) 1M x 36

VRAM CONFIGURATION	
Size	Bank 0
256KB	NONE
51KB	(2) 44256