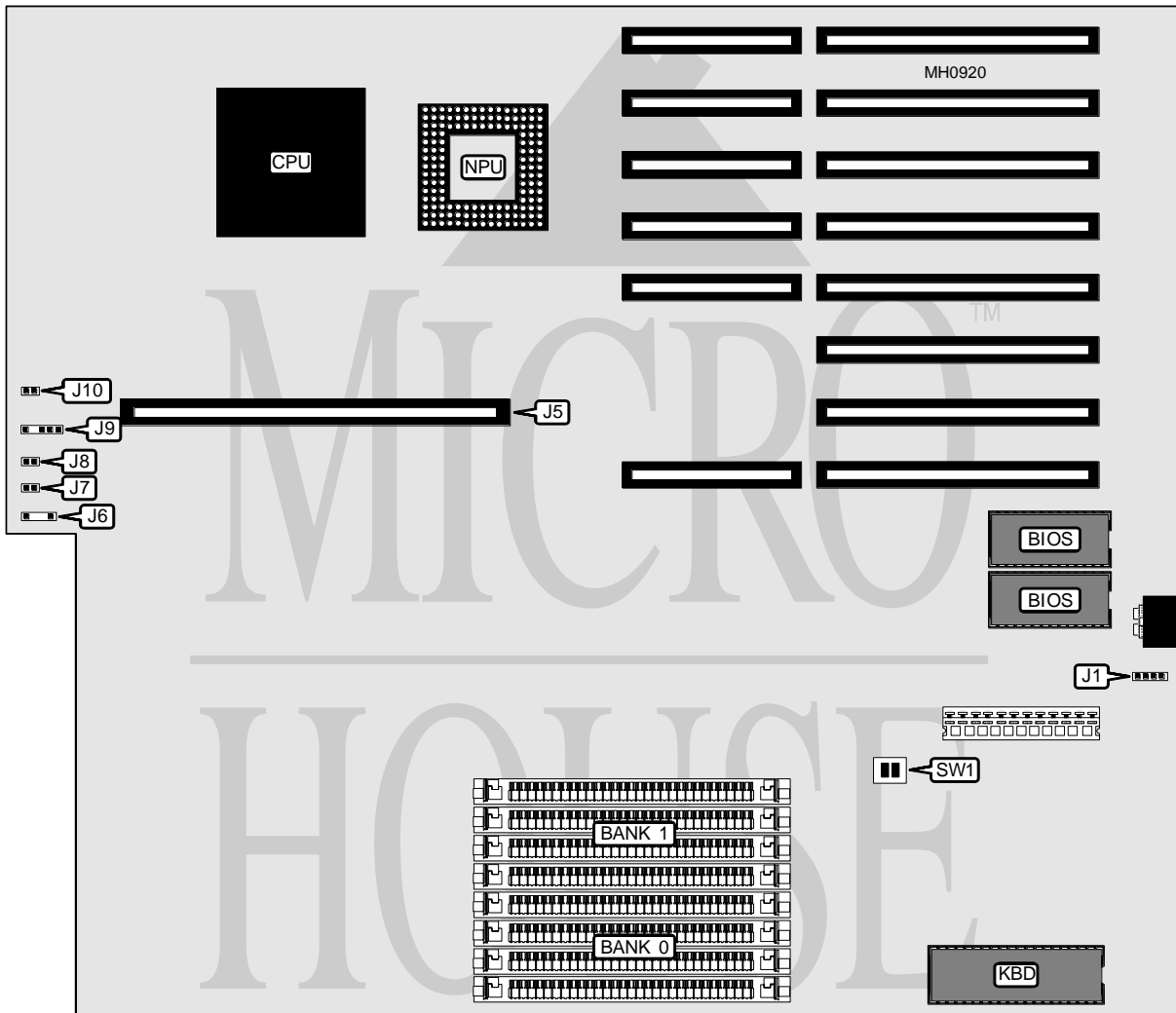


AMERICAN MEGATRENDS, INC. 486 VOYAGER

Processor	80486DX
Processor Speed	25/33MHz
Chip Set	AMI
Max. Onboard DRAM	32MB
Cache	128KB
BIOS	AMI
Dimensions	355mm x 304mm
I/O Options	32-bit external memory card slot
NPU Options	4167



CONNECTIONS			
Purpose	Location	Purpose	Location
External battery	J1	Reset switch	J8
32-bit external memory card	J5	Power LED & keylock	J9
Speaker	J6	Turbo LED	J10
Turbo switch	J7		

Continued on next page . . .

AMERICAN MEGATRENDS, INC.

486 VOYAGER

... continued from previous page

USER CONFIGURABLE SETTINGS		
Function	Switch	Position
í Factory configured - do not alter	SW1/1	Off
í Monitor type select monochrome	SW1/2	Off
Monitor type select color	SW1/2	On
Note : Cache is factory installed and is not configurable. The size and location of cache & tag is unidentified.		

DRAM CONFIGURATION		
Size	Bank 0	Bank 1
1MB	(4) 256K x 9	NONE
2MB	(4) 256K x 9	(4) 256K x 9
4MB	(4) 1M x 9	NONE
8MB	(4) 1M x 9	(4) 1M x 9
16MB	(4) 4M x 9	NONE
32MB	(4) 4M x 9	(4) 4M x 9