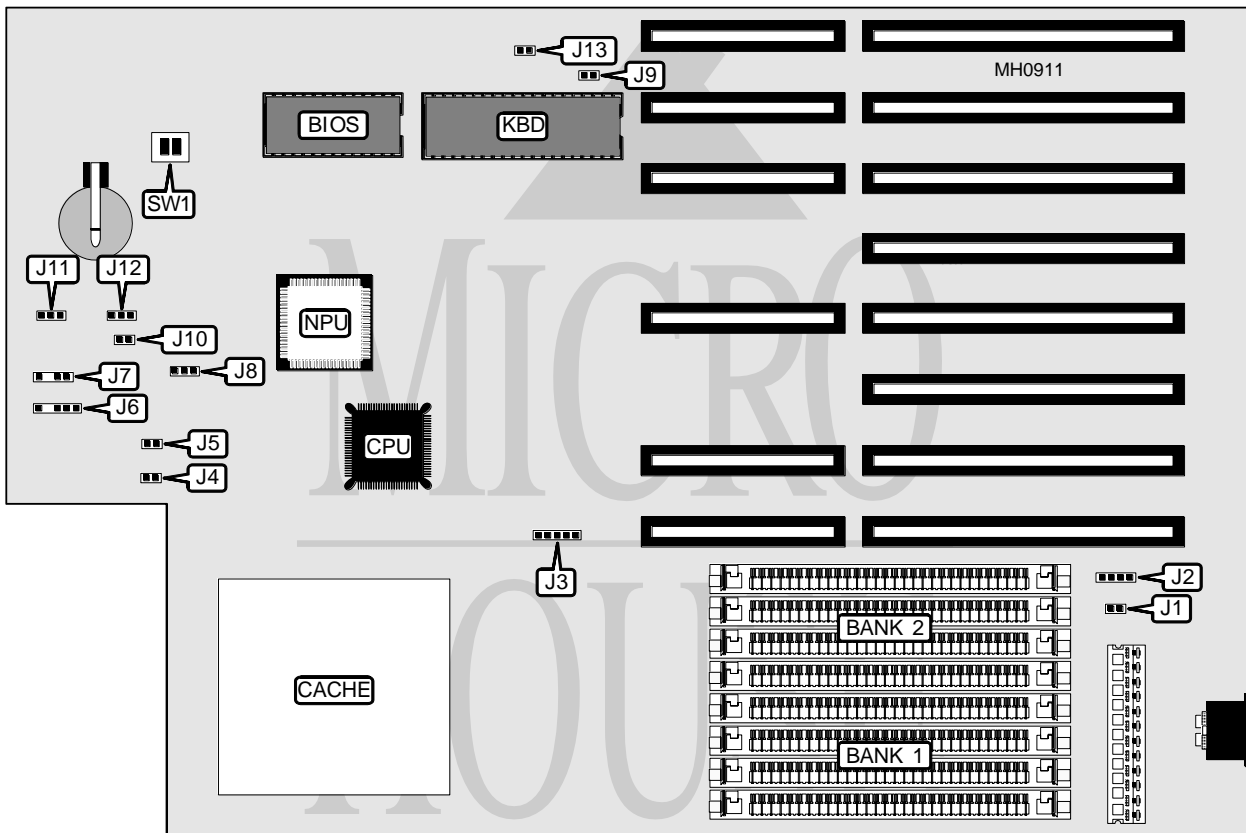


AMERICAN MEGATRENDS, INC.

AMI 386SX CACHE

| | |
|--------------------------|---------------|
| Processor | 80386SX |
| Processor Speed | 20/25MHz |
| Chip Set | AMI |
| Max. Onboard DRAM | 8MB |
| Cache | 32KB |
| BIOS | AMI |
| Dimensions | 330mm x 218mm |
| I/O Options | None |
| NPU Options | 80387SX |



| CONNECTIONS | | | |
|------------------|----------|---------------------|----------|
| Purpose | Location | Purpose | Location |
| External battery | J2 | Power LED & keylock | J6 |
| Reset switch | J4 | Speaker | J7 |
| Turbo LED | J5 | Turbo switch | J10 |

Continued on next page . . .

AMERICAN MEGATRENDS, INC.

AMI 386SX CACHE

... continued from previous page

| USER CONFIGURABLE SETTINGS | | |
|---|---------------|--------------------------|
| Function | Jumper/Switch | Position |
| í Battery select internal | J1 | Closed |
| Battery select external | J1 | Open |
| DRAM address sequence select bank 1, then bank 2 | J3 | pins 1 & 2, 3 & 4 closed |
| DRAM address sequence select bank 2, then bank 1 | J3 | pins 2 & 3, 4 & 5 closed |
| í Factory configured - do not alter | J8 | N/A |
| í CMOS memory normal operation | J9 | Open |
| CMOS memory clear | J9 | Closed |
| í Factory configured - do not alter | J11 | N/A |
| í Factory configured - do not alter | J12 | N/A |
| í Factory configured - do not alter | J13 | N/A |
| í Factory configured - do not alter | SW1/1 | Off |
| í Monitor type select monochrome | SW1/2 | Off |
| Monitor type select color | SW1/2 | On |
| Note : Cache is factory installed , and is not configurable. The size and location of cache and tag are unidentified. | | |

| DRAM CONFIGURATION | | |
|--------------------|--------------|--------------|
| Size | Bank 1 | Bank 2 |
| 1MB | (4) 256K x 9 | NONE |
| 2MB | (4) 256K x 9 | (4) 256K x 9 |
| 4MB | (4) 1M x 9 | NONE |
| 8MB | (4) 1M x 9 | (4) 1M x 9 |