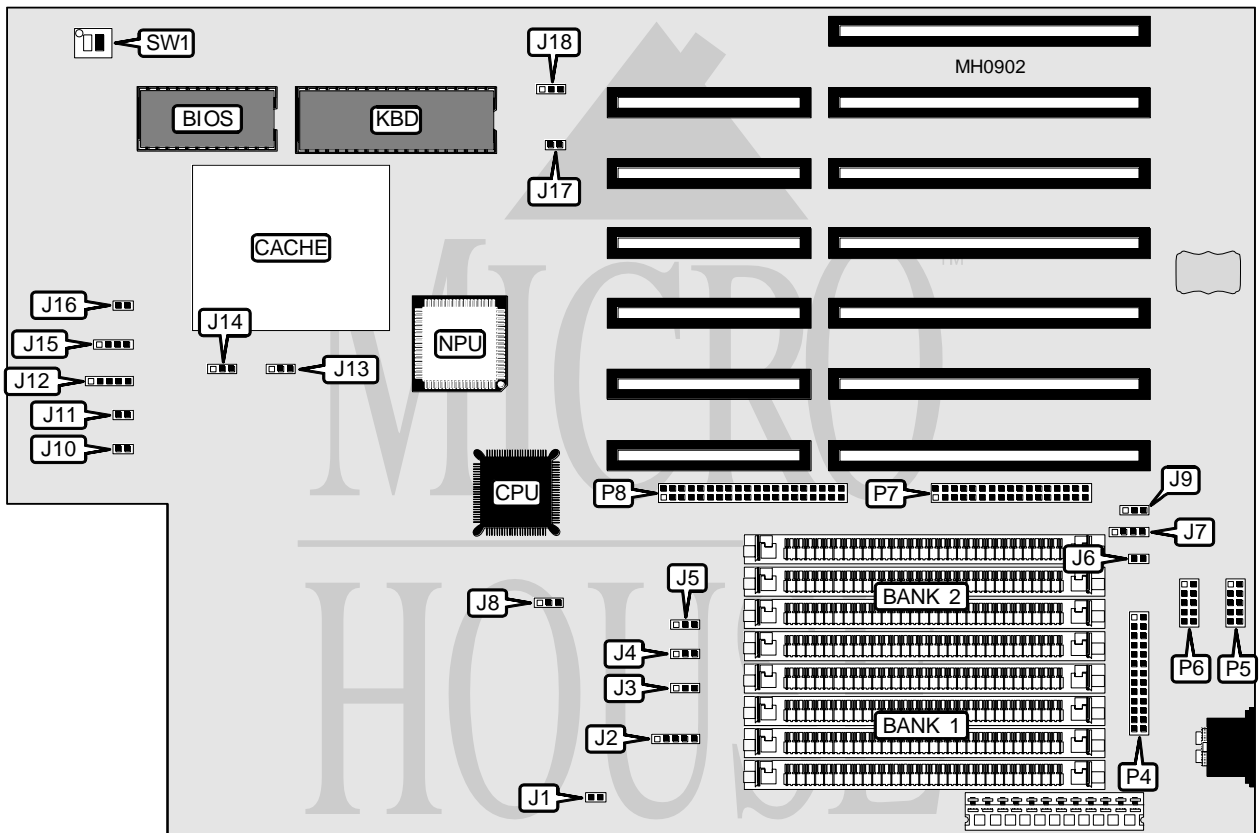


AMERICAN MEGATRENDS, INC.

AMI 386SX-II

Processor	80386SX
Processor Speed	20/25MHz
Chip Set	AMI
Max. Onboard DRAM	16MB
Cache	32KB
BIOS	AMI
Dimensions	330mm x 218mm
I/O Options	Floppy interface, IDE interface, parallel port, serial ports (2)
NPU Options	80387SX



CONNECTIONS			
Purpose	Location	Purpose	Location
IDE interface LED	J1	Turbo switch	J16
External battery	J7	Parallel port	P4
Reset switch	J10	Serial port 1	P5
Turbo LED	J11	Serial port 2	P6
Power LED & keylock	J12	Floppy interface	P7
Speaker	J15	IDE interface	P8

Continued on next page . . .

AMERICAN MEGATRENDS, INC.
AMI 386SX-II

... continued from previous page

USER CONFIGURABLE SETTINGS		
Function	Jumper/Switch	Position
í DRAM address sequence select bank 1, then bank 2	J2	pins 1 & 2, 3 & 4 closed
DRAM address sequence select bank 2, then bank 1	J2	pins 2 & 3, 4 & 5 closed
í Serial port 2 select IRQ3	J3	pins 2 & 3 closed
Serial port 2 select IRQ4	J3	pins 1 & 2 closed
í Serial port 1 select IRQ3	J4	pins 2 & 3 closed
Serial port 1) select IRQ4	J4	pins 1 & 2 closed
í Factory configured - do not alter	J5	pins 1 & 2 closed
í On board battery enabled	J6	Closed
On board battery disabled	J6	Open
í Parallel port select IRQ7	J8	pins 2 & 3 closed
Parallel port select IRQ5	J8	pins 1 & 2 closed
í Power good signal detect from power supply	J9	pins 2 & 3 closed
Power good signal detect from board	J9	pins 1 & 2 closed
í Factory configured - do not alter	J13	pins 2 & 3 closed
í Factory configured - do not alter	J14	pins 1 & 2 closed
í CMOS memory normal operation	J17	Open
CMOS memory clear	J17	Closed
í Factory configured - do not alter	J18	Open
í Factory configured - do not alter	SW1/1	Off
Monitor type select color	SW1/2	On
Monitor type select monochrome	SW1/2	Off
Note : Cache is factory installed and is not configurable. The size of the cache & tag chips are unidentified.		

DRAM CONFIGURATION		
Size	Bank 1	Bank 2
1MB	(4) 256K x 9	NONE
2MB	(4) 256K x 9	(4) 256K x 9
4MB	(4) 1M x 9	NONE
5MB	(4) 1M x 9	(4) 256K x 9
8MB	(4) 1M x 9	(4) 1M x 9
16MB	(4) 4M x 9	NONE