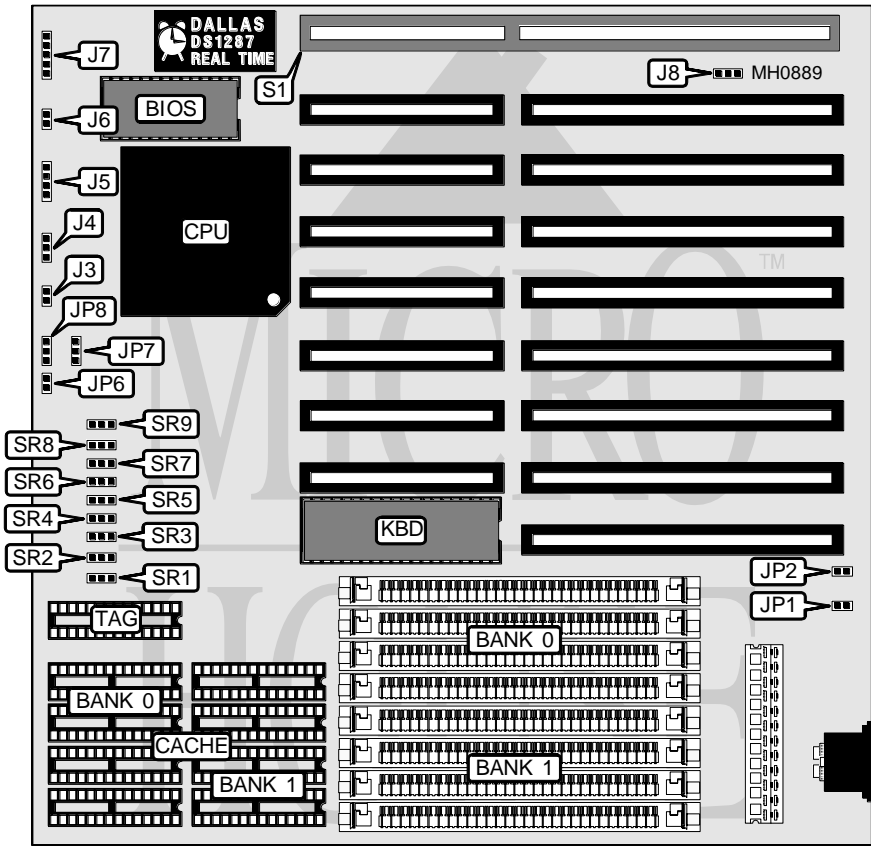


AUSTIN COMPUTER SYSTEMS

486 S14

Processor	80486DX/80486DX2
Processor Speed	25/33/50(internal)/50/66(internal)MHz
Chip Set	SIS
Max. Onboard DRAM	32MB
Cache	64/128/256KB
BIOS	AMI
Dimensions	220mm x 220mm
I/O Options	32-bit proprietary OPTI local bus card slot
NPU Options	None



CONNECTIONS			
Purpose	Location	Purpose	Location
Turbo LED	J3	Reset switch	J6
Turbo switch	J4	Power LED & keylock	J7
Speaker	J5	32-bit OPTI local bus card	S1

Continued on next page . . .

AUSTIN COMPUTER SYSTEMS

486 S14

... continued from previous page

USER CONFIGURABLE SETTINGS		
Function	Jumper	Position
í Local bus data size select 32-bits	J8	pins 1 & 2 closed
Local bus data size select 16-bits	J8	pins 2 & 3 closed
í CMOS memory normal operation	JP1	Closed
CMOS memory clear	JP1	Open
í Monitor type select color	JP2	Closed
Monitor type select monochrome	JP2	Open
í Factory configured - do not alter	JP6	N/A
í Factory configured - do not alter	JP7	N/A
í Factory configured - do not alter	JP8	N/A

DRAM CONFIGURATION		
Size	Bank 0	Bank 1
1MB	(4) 256K x 9	NONE
2MB	(4) 256K x 9	(4) 256K x 9
4MB	(4) 1M x 9	NONE
8MB	(4) 1M x 9	(4) 1M x 9
16MB	(4) 4M x 9	NONE
20MB	(4) 1M x 9	(4) 4M x 9
32MB	(4) 4M x 9	(4) 4M x 9

CACHE CONFIGURATION			
Size	Bank 0	Bank 1	TAG
64KB	(4) 8K x 8	(4) 8K x 8	(1) 8K x 8
128KB	(4) 32K x 8	NONE	(1) 8K x 8
256KB	(4) 32K x 8	(4) 32K x 8	(1) 32K x 8

CACHE JUMPER CONFIGURATION									
Size	SR1	SR2	SR3	SR4	SR5	SR6	SR7	SR8	SR9
64KB	1 & 2	1 & 2	2 & 3	2 & 3	2 & 3	2 & 3	1 & 2	1 & 2	1 & 2
128KB	2 & 3	2 & 3	2 & 3	1 & 2	1 & 2	2 & 3	2 & 3	1 & 2	1 & 2
256KB	2 & 3	2 & 3	2 & 3	2 & 3	2 & 3	2 & 3	2 & 3	2 & 3	2 & 3

Note: Pins designated should be in the closed position.