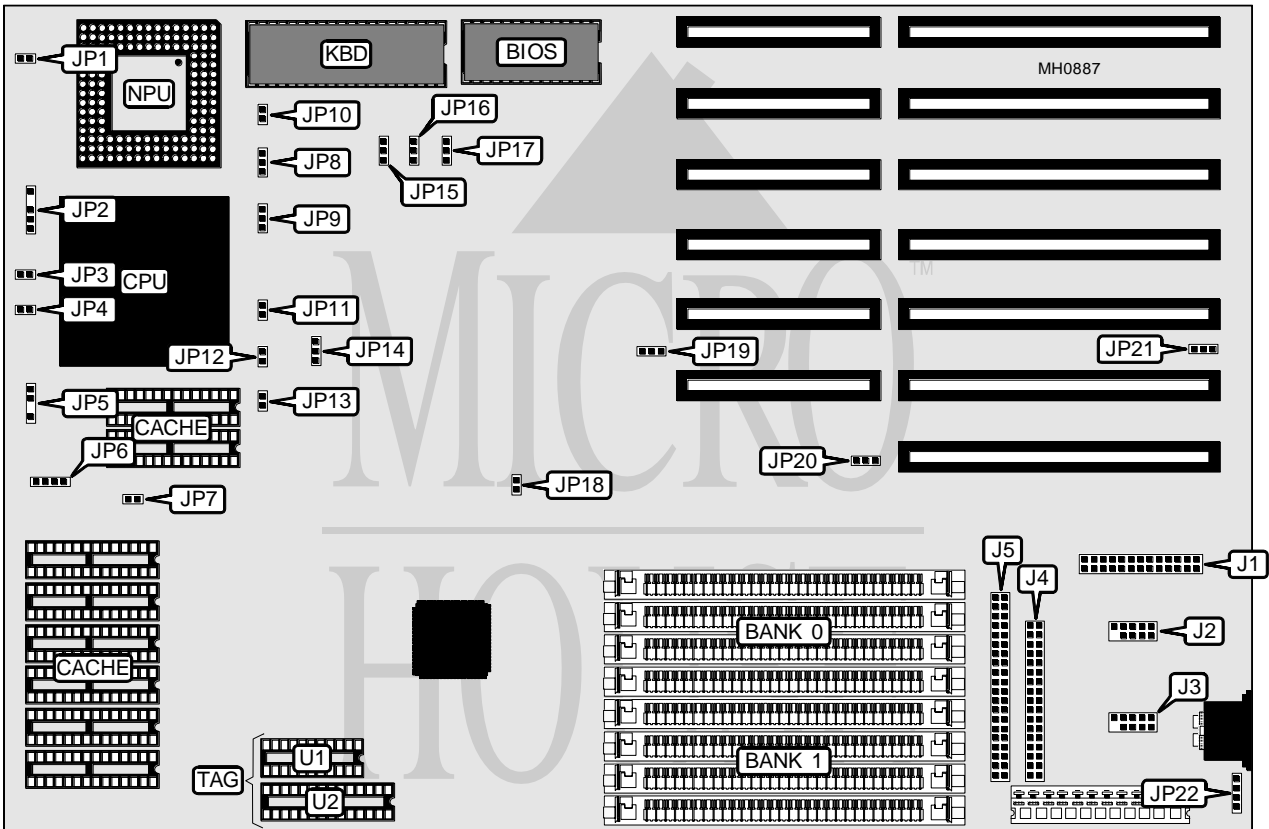


AUSTIN COMPUTER SYSTEMS

486U

Processor	80486SX/80487SX/80486DX/80486DX2
Processor Speed	20/25/33/50(internal)/50/66(internal)MHz
Chip Set	OPTI
Max. Onboard DRAM	32MB
Cache	64/256KB
BIOS	Mylex
Dimensions	330mm x 218mm
I/O Options	Floppy drive interface, IDE interface, parallel port, serial ports (2)
NPU Options	4167



CONNECTIONS			
Purpose	Location	Purpose	Location
Parallel port	J1	Turbo LED	JP3
Serial port COM 2	J2	Reset switch	JP4
Serial port COM 1	J3	Speaker	JP5
Floppy controller	J4	IDE interface LED	JP6
IDE interface	J5	External battery	JP22
Power LED & keylock	JP2		

Continued on next page . . .

AUSTIN COMPUTER SYSTEMS

486U

... continued from previous page

USER CONFIGURABLE SETTINGS		
Function	Jumper	Position
í Monitor type select monochrome	JP1	open
Monitor type select color	JP1	closed
í Parallel port IRQ select IRQ7	JP19	pins 2 & 3 closed
Parallel port IRQ select IRQ5	JP19	pins 1 & 2 closed
í CMOS memory normal operation	JP21	pins 2 & 3 closed
CMOS memory clear	JP21	pins 1 & 2 closed

DRAM CONFIGURATION		
Size	Bank 0	Bank 1
1MB	(4) 256K x 9	NONE
2MB	(4) 256K x 9	(4) 256K x 9
4MB	(4) 1M x 9	NONE
5MB	(4) 1M x 9	(4) 256K x 9
8MB	(4) 1M x 9	(4) 1M x 9
16MB	(4) 4M x 9	NONE
32MB	(4) 4M x 9	(4) 4M x 9

CACHE CONFIGURATION			
Size	Bank 0	TAG (U1)	TAG (U2)
64KB	(8) 8K x 8	(1) 64K x 1	(1) 8K x 8
256KB	(8) 32K x 8	(1) 64K x 1	(1) 32K x 8

CACHE JUMPER CONFIGURATION				
Size	JP7	JP11	JP12	JP13
64KB	Open	Open	Open	Open
256KB	Closed	Closed	Open	Closed

CPU TYPE CONFIGURATION			
Type	JP8	JP9	JP10
80486SX	Open	pins 2 & 3 closed	Open
80487SX	pins 2 & 3 closed	pins 1 & 2 closed	Closed
80486DX	pins 1 & 2 closed	pins 1 & 2 closed	Closed
80486DX2	pins 1 & 2 closed	pins 1 & 2 closed	Closed

CPU SPEED CONFIGURATION					
Speed	JP14	JP15	JP16	JP17	JP18
20MHz	2 & 3	1 & 2	2 & 3	1 & 2	Open
25MHz	2 & 3	2 & 3	1 & 2	2 & 3	Open
33MHz	2 & 3	1 & 2	1 & 2	2 & 3	Open
50MHz	1 & 2	2 & 3	1 & 2	2 & 3	Closed
50iMHz	2 & 3	2 & 3	1 & 2	2 & 3	Open
66iMHz	2 & 3	1 & 2	1 & 2	2 & 3	Open

Note: Pins designated should be in the closed position.

Continued on next page ...

AUSTIN COMPUTER SYSTEMS**486U***... continued from previous page*

ON BOARD I/O CONFIGURATION	
Setting	JP20
Serial port 1, serial port 2, parallel port, floppy drive interface enabled	pins 1 & 2 closed
Serial port 1, serial port 2, parallel port, floppy drive interface disabled	pins 2 & 3 closed