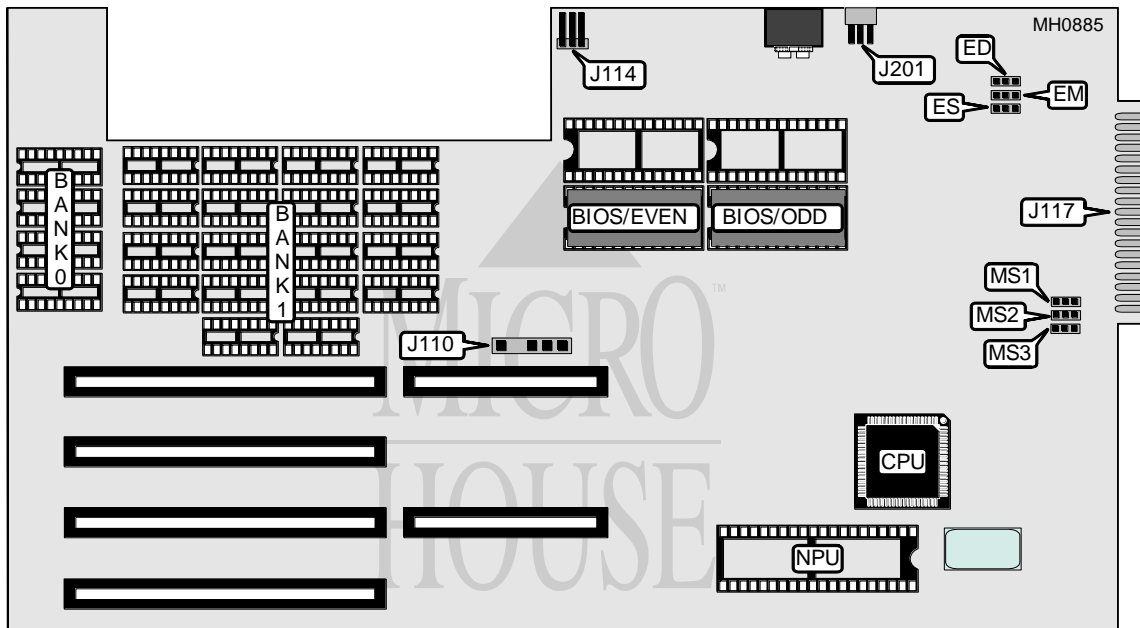


COMPAQ COMPUTER CORPORATION PORTABLE II (MODEL 000324)

Processor	80286
Processor Speed	8MHz
Chip Set	None
Max. Onboard DRAM	640KB
Cache	None
BIOS	Compaq
Dimensions	302mm x 256mm
I/O Options	External memory card
NPU Options	80287



CONNECTIONS			
Purpose	Location	Purpose	Location
Drive power	J110	Main power	J117
Speaker	J114	Internal monitor power	J201

Continued on next page . . .

COMPAQ COMPUTER CORPORATION

PORTABLE II (MODEL 000324)

... continued from previous page

USER CONFIGURABLE SETTINGS		
Function	Switch	Position
í Monitor type select Compaq VDU, EGA or RGBI	ED	pins 2 & 3 closed
Monitor type select monochrome (MDA)	ED	pins 1 & 2 closed
í CPU speed select 8MHz	ES	pins 1 & 2 closed
CPU speed select 6MHz	ES	pins 2 & 3 closed
í Factory configured - do not alter	EM	N/A

DRAM CONFIGURATION		
Size	Bank 0	Bank 1
128KB	(4) 4464	NONE
256KB	(4) 4464	(18) 4164
640KB	(4) 4464	(18) 41256

DRAM CONFIGURATION			
Memory recognized	MS1	MS2	MS3
None	Setting G	Setting G	N/A
256KB	Setting V	Setting G	N/A
512KB	Setting G	Setting V	N/A
640KB	Setting V	Setting V	N/A
1MB	N/A	N/A	Setting V
1.5MB	N/A	N/A	Setting G

Note: The settings G and V are silk-screened on the board. The actual pin connections are unknown. 1MB and 1.5MB configurations require the system memory card to be installed.