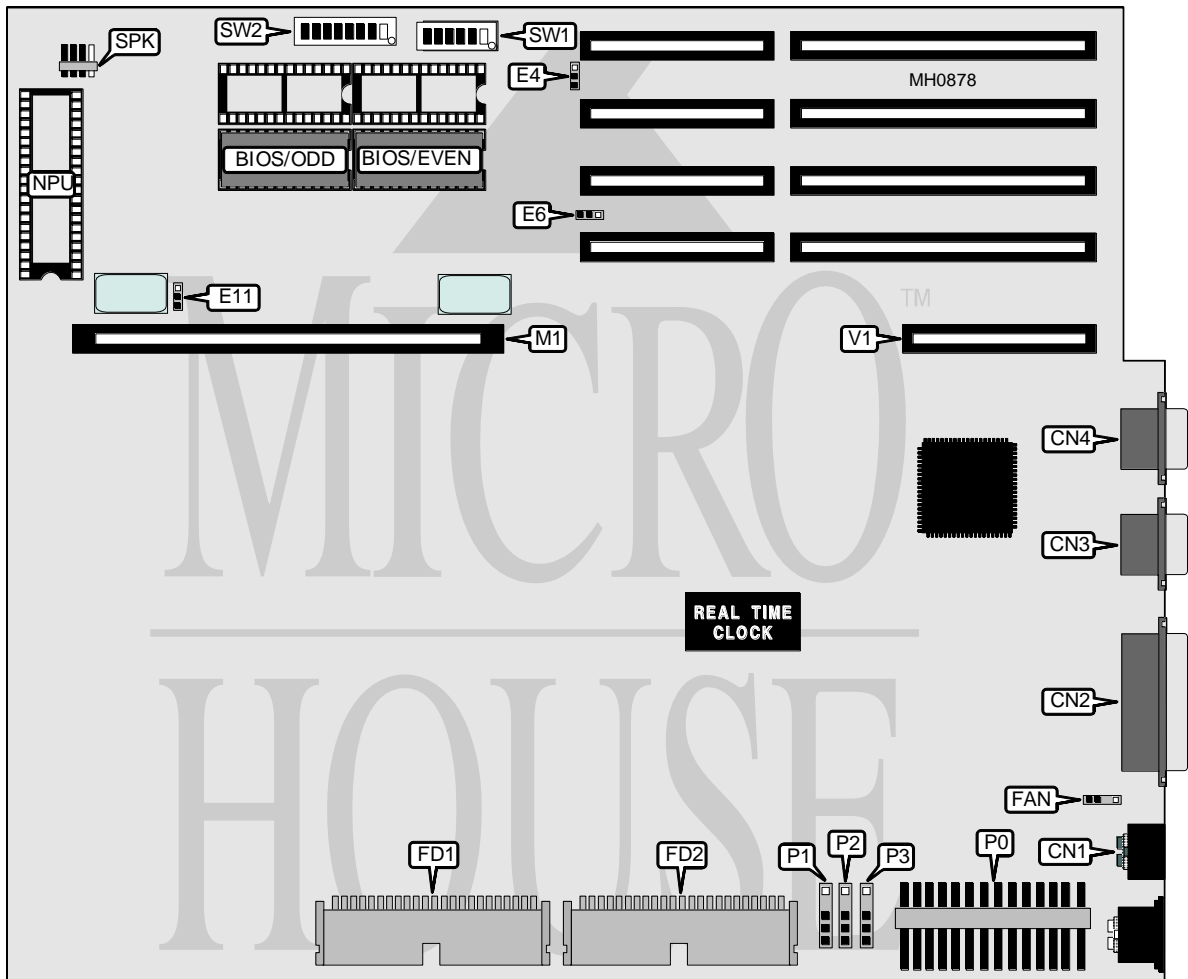


COMPAQ COMPUTER CORPORATION

DESKPRO 286E (MODEL 001226)

Processor	80286
Processor Speed	12MHz
Chip Set	Compaq
Max. Onboard DRAM	1MB (12MB on system memory card)
Cache	None
BIOS	Compaq
Dimensions	332mm x 333mm
I/O Options	VGA feature connector, floppy drive interface, IDE interface, proprietary system memory card slot, parallel port, serial port, VGA port, bus mouse
NPU Options	80287



CONNECTIONS			
Purpose	Location	Purpose	Location
Bus mouse port	CN1	IDE interface	FD2
Parallel port	CN2	Proprietary system memory card	M1
Serial port	CN3	Speaker	SPK
VGA port	CN4	Main power	P0
Fan power	FAN	Drive power plugs	P1-3
3.5 inch floppy drive interface	FD1	VGA feature connector	V1

Continued on next page . . .

COMPAQ COMPUTER CORPORATION

DESKPRO 286E (MODEL 001226)

... continued from previous page

USER CONFIGURABLE SETTINGS		
Function	Jumper/Switch	Position
í Mouse port enabled	E4	pins 2 & 3 closed
Mouse port disabled	E4	pins 1 & 2 closed
í Local bus hidden refresh enabled	E6	pins 2 & 3 closed
Local bus hidden refresh disabled	E6	pins 1 & 2 closed
í NPU speed select 12MHz	E11	pins 2 & 3 closed
í NPU speed select 8MHz	E11	pins 1 & 2 closed
í Option ROM disabled	SW1/3	Off
Option ROM enabled	SW1/3	On
í CPU speed select automatic at power-on	SW1/4	On
CPU speed select high at power-on	SW1/4	Off
í Factory configured - do not alter	SW1/5	Off
í Monitor type select color	SW1/6	On
Monitor type select monochrome (MDA)	SW1/6	Off
í IDE address select 1Fx;primary floppy address select 3Fx	SW2/1	Off
IDE address select 17x;secondary floppy address select 37x	SW2/1	On
í Password enabled	SW2/2	Off
Password disabled	SW2/2	On
í IDE drive interface enabled	SW2/3	Off
IDE drive interface disabled	SW2/3	On
í VGA port enabled	SW2/8	Off
VGA port disabled	SW2/8	On

DRAM SWITCH CONFIGURATION		
Size	SW1/1	SW1/2
256KB	Off	Off
512KB	On	Off
640KB	On	On
Reserved	Off	On

PARALLEL PORT CONFIGURATION		
Setting	SW2/6	SW2/7
LPT1 at 3Bx	On	Off
LPT2 at 37x	Off	On
Disabled	On	On

SERIAL PORT CONFIGURATION		
Setting	SW2/4	SW2/5
COM1 at IRQ4	Off	Off
COM2 at IRQ3	On	Off
Disabled	On	On