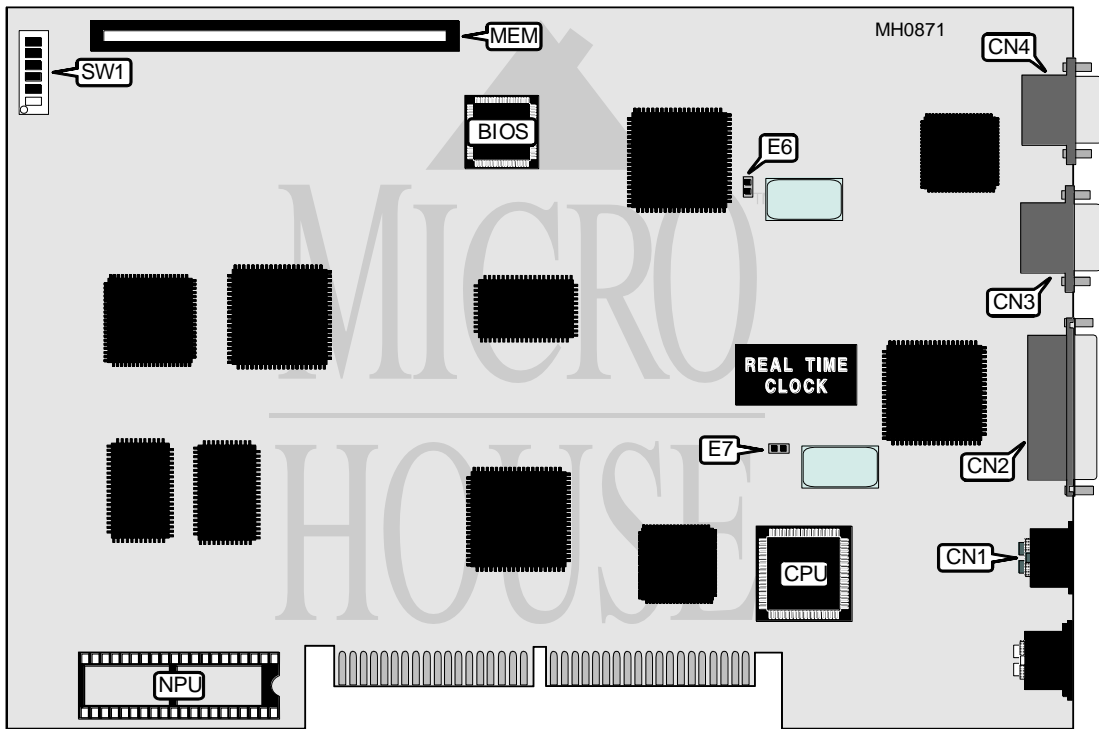


COMPAQ COMPUTER CORPORATION

DESKPRO 286N

Processor	80286
Processor Speed	12MHz
Chip Set	Compaq
Max. Onboard DRAM	13MB (on system memory card)
Cache	None
BIOS	Compaq
Dimensions	282mm x 191mm
I/O Options	Proprietary system memory card slot, VGA port, parallel port, serial port, bus mouse port, IDE interface, floppy drive/tape drive interface
NPU Options	80287

CPU MODULE (Model 001448)



CONNECTIONS			
Purpose	Location	Purpose	Location
Bus mouse port	CN1	VGA port	CN4
Parallel port	CN2	Proprietary system memory card slot	MEM
Serial port	CN3		

Continued on next page . . .

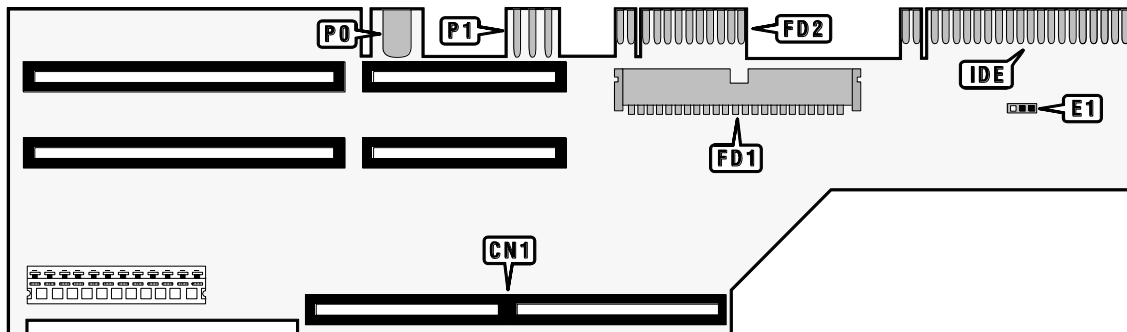
COMPAQ COMPUTER CORPORATION

DESKPRO 286N

... continued from previous page

USER CONFIGURABLE SETTINGS		
Function	Jumper/Switch	Position
í Factory configured - do not alter	E6	Open
í Factory configured - do not alter	E7	Open
í Onboard VGA controller enabled	SW1/1	On
Onboard VGA controller disabled	SW1/1	Off
í Setup enabled (ROM resident)	SW1/2	On
Setup disabled (ROM resident)	SW1/2	Off
í External boot enabled	SW1/3	On
External boot disabled	SW1/3	Off
í Power-on password enabled	SW1/4	On
Power-on password disabled	SW1/4	Off
í NPU speed select 8MHz	SW1/5	On
NPU speed select 12MHz	SW1/5	On
í Floppy drive write enabled	SW1/6	On
Floppy drive write disabled	SW1/6	Off

BACKPLANE BOARD (Model 001451)



CONNECTIONS			
Purpose	Location	Purpose	Location
CPU module	CN1	IDE interface	IDE
5.25 Floppy drive interface	FD1	Fan power	P0
3.5 Floppy drive interface/power	FD2	IDE drive/5.25 drive power	P1

USER CONFIGURABLE SETTINGS		
Function	Jumper	Position
í Fan speed select automatic (thermostat enabled)	E1	pins 2 & 3 closed
Fan speed select high (thermostat disabled)	E1	pins 1 & 2 closed