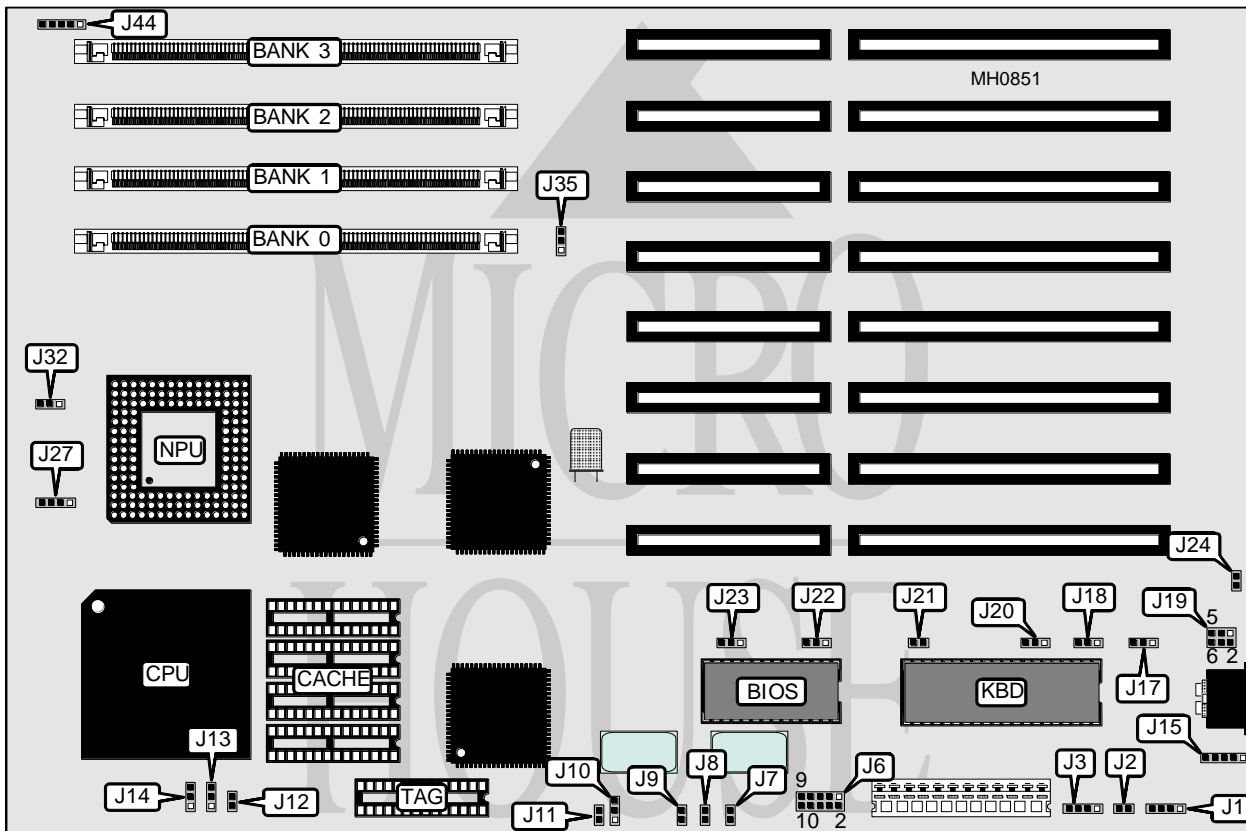


MONOLITHIC SYSTEMS, INC. (COLORADO MSI) MICROFRAME 486P

Processor	80486SX/80487SX/80486DX/80486DX2
Processor Speed	25/33/50/66(internal)MHz
Chip Set	C & T PEAK DM
Max. Onboard DRAM	32MB
Cache	128KB
BIOS	AMI
Dimensions	330mm x 218mm
I/O Options	Bus mouse connector
NPU Options	4167



CONNECTIONS			
Purpose	Location	Purpose	Location
External battery	J1	Auxiliary keyboard	J15
IDE interface LED	J3	Bus mouse	J19
Front panel composite cable	J6	Speaker	J27
Ready LED	J7	Power LED & keylock	J44
Reset switch	J8		

Continued on next page . . .

MONOLITHIC SYSTEMS, INC. (COLORADO MSI)

MICROFRAME 486P

... continued from previous page

USER CONFIGURABLE SETTINGS		
Function	Jumper	Position
í CMOS memory normal operation	J2	Open
CMOS memory clear	J2	Closed
í Factory configured - do not alter	J9	Open
í Factory configured - do not alter	J10	pins 2 & 3 closed
í Factory configured - do not alter	J11	Closed
í Factory configured - do not alter	J17	pins 2 & 3 closed
í Monitor type select color	J18	pins 2 & 3 closed
Monitor type select monochrome	J18	pins 1 & 2 closed
í Factory configured - do not alter	J20	pins 1 & 2 closed
í Bus mouse enabled	J21	Closed
Bus mouse disabled	J21	Open
í Factory configured - do not alter	J22	pins 1 & 2 closed
í Factory configured - do not alter	J23	pins 2 & 3 closed
í Factory configured - do not alter	J24	Open
í Cache enabled	J32	pins 1 & 2 closed
Cache disabled	J32	pins 2 & 3 closed
í DMA signal select active high	J35	pins 1 & 2 closed
DMA signal select active low	J35	pins 2 & 3 closed

DRAM CONFIGURATION				
Size	Bank 0	Bank 1	Bank 2	Bank 3
1MB	(1) 256K x 36	NONE	NONE	NONE
2MB	(1) 512K x 36	NONE	NONE	NONE
3MB	(1) 512K x 36	(1) 256K x 36	NONE	NONE
4MB	(1) 1M x 36	NONE	NONE	NONE
5MB	(1) 1M x 36	(1) 256K x 36	NONE	NONE
6MB	(1) 512K x 36	(1) 1M x 36	NONE	NONE
7MB	(1) 512K x 36	(1) 1M x 36	(1) 256K x 36	NONE
8MB	(1) 2M x 36	NONE	NONE	NONE
9MB	(1) 2M x 36	(1) 256K x 36	NONE	NONE
10MB	(1) 2M x 36	(1) 512K x 36	NONE	NONE
11MB	(1) 2M x 36	(1) 512K x 36	(1) 256K x 36	NONE
12MB	(1) 2M x 36	(1) 1M x 36	NONE	NONE
13MB	(1) 2M x 36	(1) 1M x 36	(1) 256K x 36	NONE
14MB	(1) 2M x 36	(1) 512K x 36	(1) 1M x 36	NONE
15MB	(1) 2M x 36	(1) 512K x 36	(1) 1M x 36	(1) 256K x 36
16MB	(1) 2M x 36	(1) 2M x 36	NONE	NONE
17MB	(1) 2M x 36	(1) 2M x 36	(1) 256K x 36	NONE
18MB	(1) 2M x 36	(1) 2M x 36	(1) 512K x 36	NONE
19MB	(1) 2M x 36	(1) 2M x 36	(1) 512K x 36	(1) 256K x 36
20MB	(1) 2M x 36	(1) 2M x 36	(1) 1M x 36	NONE
21MB	(1) 2M x 36	(1) 2M x 36	(1) 1M x 36	(1) 256K x 36
22MB	(1) 2M x 36	(1) 2M x 36	(1) 512K x 36	(1) 1M x 36

Continued on next page ...

MONOLITHIC SYSTEMS, INC. (COLORADO MSI)

MICROFRAME 486P

... continued from previous page

DRAM CONFIGURATION (CON'T)				
Size	Bank 0	Bank 1	Bank 2	Bank 3
24MB	(1) 2M x 36	(1) 2M x 36	(1) 2M x 36	NONE
25MB	(1) 2M x 36	(1) 2M x 36	(1) 2M x 36	(1) 256K x 36
26MB	(1) 2M x 36	(1) 2M x 36	(1) 2M x 36	(1) 512K x 36
28MB	(1) 2M x 36	(1) 2M x 36	(1) 2M x 36	(1) 1M x 36
32MB	(1) 2M x 36	(1) 2M x 36	(1) 2M x 36	(1) 2M x 36

CACHE CONFIGURATION		
Size	Bank 0	TAG
128KB	(4) 32K x 8	(1) 32K x 8

CPU TYPE CONFIGURATION			
Type	J12	J13	J14
80486SX	Open	pins 2 & 3 closed	Open
80487SX	Closed	pins 2 & 3 closed	pins 2 & 3 closed
80486DX	Closed	pins 1 & 2 closed	pins 1 & 2 closed
80486DX2	Closed	pins 1 & 2 closed	pins 1 & 2 closed