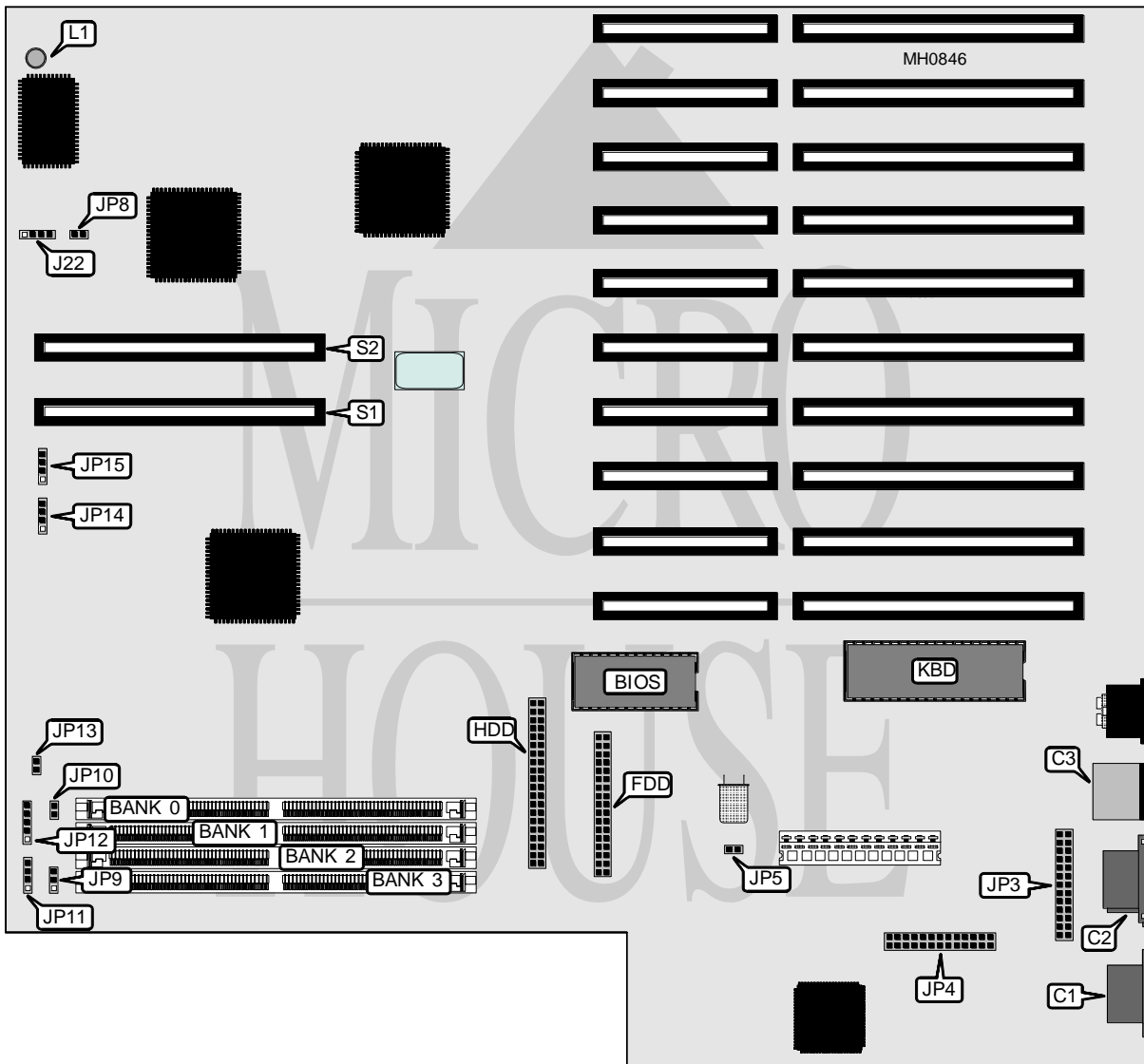


# ADVANCED LOGIC RESEARCH, INC.

## FLYER 32LCT

<b>Processor</b>	80486SX/80486DX/80486DX2
<b>Processor Speed</b>	25/33/50MHz
<b>Chip Set</b>	C & T
<b>Max. Onboard DRAM</b>	64MB
<b>Cache</b>	256KB
<b>BIOS</b>	Phoenix
<b>Dimensions</b>	335mm x 311mm
<b>I/O Options</b>	Floppy drive interface, IDE interface, parallel port, PS/2 mouse port, proprietary CPU module slot, proprietary cache module slot, serial ports (2), VGA port
<b>NPU Options</b>	None



Continued on next page . . .

# ADVANCED LOGIC RESEARCH, INC.

## FLYER 32LCT

... continued from previous page

CONNECTIONS			
Purpose	Location	Purpose	Location
VGA port	C1	Turbo LED	JP10
Serial ports (COM1&COM2)	C2	IDE interface LED	JP11
PS/2 bus mouse	C3	Power LED & keylock	JP12
Floppy drive interface	FDD	Reset switch	JP13
IDE interface	HDD	Cooling fan connector	JP14
External battery	J22	Speaker	JP15
Parallel port	JP3	On-board power LED	L1
VGA pass-through header	JP4	Proprietary CPU module	S1
Turbo switch	JP9	Proprietary cache module	S2

USER CONFIGURABLE SETTINGS		
Function	Jumper	Position
í VGA port enabled	JP5	Closed
VGA port disabled	JP5	Open
í CMOS memory normal operation	JP8	Open
CMOS memory clear	JP8	Closed

DRAM CONFIGURATION				
Size	Bank 0	Bank 1	Bank 2	Bank 3
1MB	(1) 256K x 36	NONE	NONE	NONE
2MB	(1) 256K x 36	(1) 256K x 36	NONE	NONE
3MB	(1) 256K x 36	(1) 256K x 36	(1) 256K x 36	NONE
4MB	(1) 256K x 36	(1) 256K x 36	(1) 256K x 36	(1) 256K x 36
4MB	(1) 1M x 36	NONE	NONE	NONE
5MB	(1) 256K x 36	(1) 1M x 36	NONE	NONE
6MB	(1) 256K x 36	(1) 256K x 36	(1) 1M x 36	NONE
8MB	(1) 1M x 36	(1) 1M x 36	NONE	NONE
9MB	(1) 256K x 36	(1) 1M x 36	(1) 1M x 36	NONE
10MB	(1) 256K x 36	(1) 256K x 36	(1) 1M x 36	(1) 1M x 36
12MB	(1) 1M x 36	(1) 1M x 36	(1) 1M x 36	NONE
16MB	(1) 1M x 36	(1) 1M x 36	(1) 1M x 36	(1) 1M x 36
16MB	(1) 4M x 36	NONE	NONE	NONE
20MB	(1) 1M x 36	(1) 4M x 36	NONE	NONE
24MB	(1) 1M x 36	(1) 1M x 36	(1) 4M x 36	NONE
32MB	(1) 4M x 36	(1) 4M x 36	NONE	NONE
36MB	(1) 1M x 36	(1) 4M x 36	(1) 4M x 36	NONE
40MB	(1) 1M x 36	(1) 1M x 36	(1) 4M x 36	(1) 4M x 36
48MB	(1) 4M x 36	(1) 4M x 36	(1) 4M x 36	NONE
64MB	(1) 4M x 36	(1) 4M x 36	(1) 4M x 36	(1) 4M x 36

CACHE CONFIGURATION	
Size	Location
256KB	Proprietary cache module (S2)