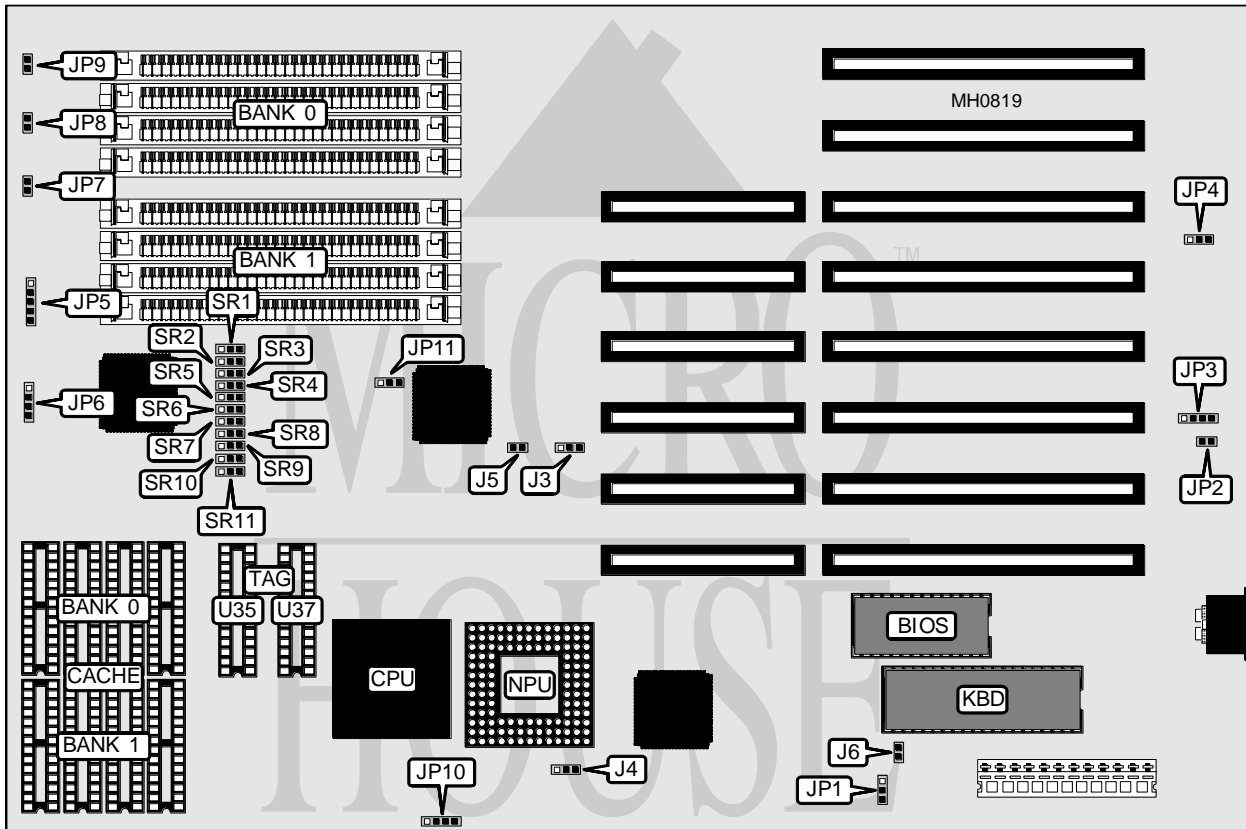


UNIDENTIFIED

386/40

| | |
|--------------------------|-----------------|
| Processor | 80386DX |
| Processor Speed | 33/40MHz |
| Chip Set | C & T |
| Max. Onboard DRAM | 32MB |
| Cache | 32/64/128/256KB |
| BIOS | AMI/C & T |
| Dimensions | 330mm x 218mm |
| I/O Options | None |
| NPU Options | 80387/3167 |



| CONNECTIONS | | | |
|---------------------|----------|--------------|----------|
| Purpose | Location | Purpose | Location |
| External battery | JP3 | Reset switch | JP7 |
| Power LED & keylock | JP5 | Turbo LED | JP8 |
| Speaker | JP6 | Turbo switch | JP9 |

Continued on next page . . .

UNIDENTIFIED

386/40

... continued from previous page

| USER CONFIGURABLE SETTINGS | | |
|--|--------|-------------------|
| Function | Jumper | Position |
| í Factory configured - do not alter | J3 | N/A |
| í Factory configured - do not alter | J4 | N/A |
| í NPU mode select synchronous with CPU | J5 | Open |
| NPU mode select synchronous with OSC1 | J5 | Closed |
| í Factory test disabled | J6 | Open |
| Factory test enabled | J6 | Closed |
| í Monitor type select color | JP1 | pins 1 & 2 closed |
| Monitor type select monochrome | JP1 | pins 2 & 3 closed |
| í Battery select internal | JP2 | Closed |
| Battery select external | JP2 | Open |
| í CMOS memory normal operation | JP4 | pins 1 & 2 closed |
| CMOS memory clear | JP4 | pins 2 & 3 closed |
| í Factory configured - do not alter | JP10 | N/A |

| DRAM CONFIGURATION | | |
|--------------------|--------------|--------------|
| Size | Bank 0 | Bank 1 |
| 1MB | (4) 256K x 9 | NONE |
| 2MB | (4) 256K x 9 | (4) 256K x 9 |
| 4MB | (4) 1M x 9 | NONE |
| 5MB | (4) 1M x 9 | (4) 256K x 9 |
| 8MB | (4) 1M x 9 | (4) 1M x 9 |
| 16MB | (4) 4M x 9 | NONE |
| 17MB | (4) 4M x 9 | (4) 256K x 9 |
| 20MB | (4) 4M x 9 | (4) 1M x 9 |
| 32MB | (4) 4M x 9 | (4) 4M x 9 |

| DRAM JUMPER CONFIGURATION | |
|---------------------------|-------------------|
| Size | JP11 |
| 1MB | pins 2 & 3 closed |
| 2MB | pins 1 & 2 closed |
| 4MB | pins 2 & 3 closed |
| 5MB | pins 2 & 3 closed |
| 8MB | pins 1 & 2 closed |
| 16MB | pins 2 & 3 closed |
| 17MB | pins 2 & 3 closed |
| 20MB | pins 2 & 3 closed |
| 32MB | pins 1 & 2 closed |

| CACHE CONFIGURATION | | | | |
|---------------------|-------------|-------------|------------|------------|
| Size | Bank 0 | Bank 1 | TAG (U35) | TAG (U37) |
| 32KB | (4) 8K x 8 | NONE | (1) 8K x 8 | NONE |
| 64KB | (4) 8K x 8 | (4) 8K x 8 | (1) 8K x 8 | (1) 8K x 8 |
| 128KB | (4) 32K x 8 | NONE | (1) 8K x 8 | NONE |
| 256KB | (4) 32K x 8 | (4) 32K x 8 | (1) 8K x 8 | (1) 8K x 8 |

Continued on next page ...

UNIDENTIFIED

386/40

... continued from previous page

| CACHE JUMPER CONFIGURATION | | | | | | |
|---|-------|-------|-------|-------|-------|--|
| Size | SR1 | SR2 | SR3 | SR4 | SR5 | |
| 32KB | 1 & 2 | 1 & 2 | 1 & 2 | 1 & 2 | 1 & 2 | |
| 64KB | 2 & 3 | 1 & 2 | 1 & 2 | 1 & 2 | 1 & 2 | |
| 128KB | 2 & 3 | 1 & 2 | 1 & 2 | 1 & 2 | 2 & 3 | |
| 256KB | 2 & 3 | 2 & 3 | 2 & 3 | 2 & 3 | 2 & 3 | |
| Note: Pins designated should be in the closed position. | | | | | | |

| CACHE JUMPER CONFIGURATION (CON'T) | | | | | | |
|---|-------|-------|-------|-------|-------|-------|
| Size | SR6 | SR7 | SR8 | SR9 | SR10 | SR11 |
| 32KB | 1 & 2 | 1 & 2 | 1 & 2 | 1 & 2 | 1 & 2 | 1 & 2 |
| 64KB | 1 & 2 | 2 & 3 | 2 & 3 | 1 & 2 | 1 & 2 | 1 & 2 |
| 128KB | 1 & 2 | 2 & 3 | 2 & 3 | 1 & 2 | 1 & 2 | 1 & 2 |
| 256KB | 2 & 3 | 1 & 2 | 2 & 3 | 2 & 3 | 2 & 3 | 2 & 3 |
| Note: Pins designated should be in the closed position. | | | | | | |