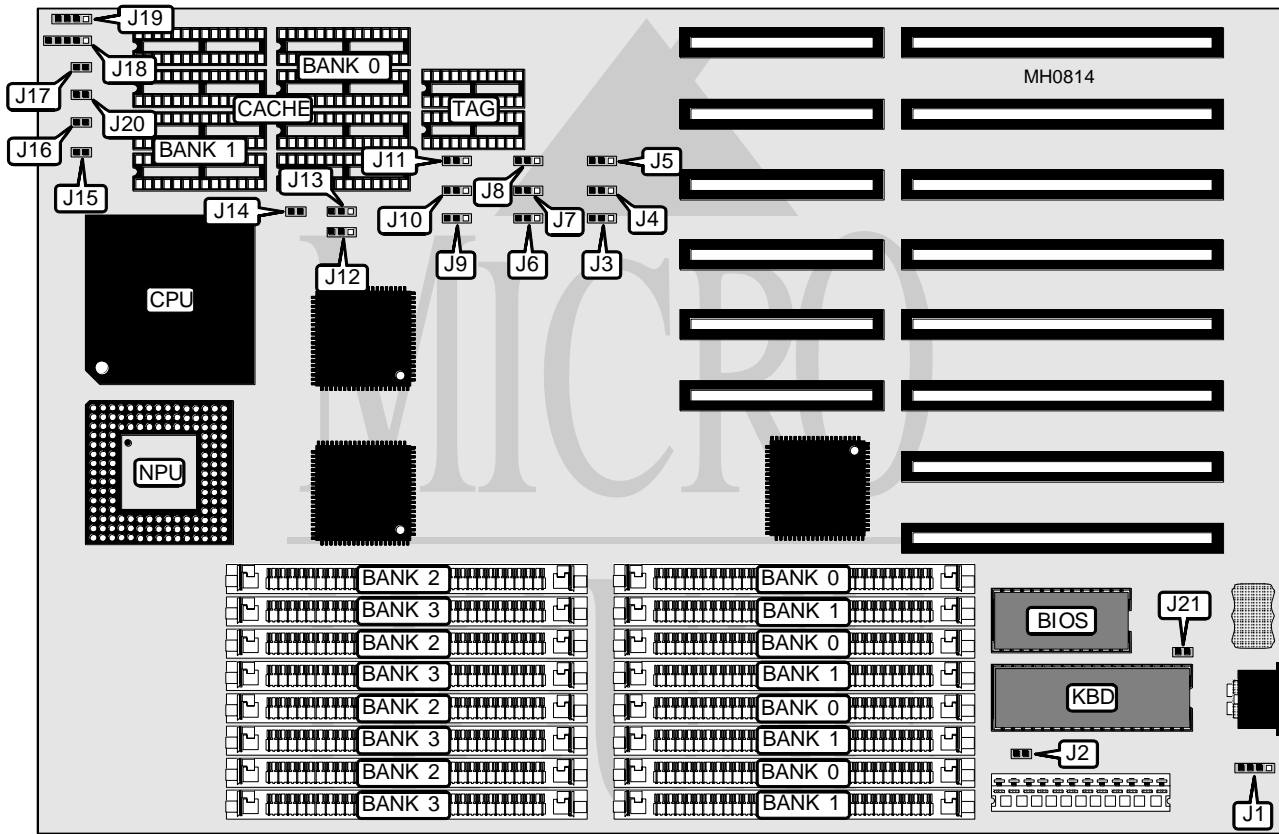


# GVC TECHNOLOGIES, INC.

## 486 - 33 / 50

<b>Processor</b>	80486SX/80487SX/80486DX
<b>Processor Speed</b>	16/20/25/33/50MHz
<b>Chip Set</b>	SIS
<b>Max. Onboard DRAM</b>	64MB
<b>Cache</b>	32/64/128/256KB
<b>BIOS</b>	AMI
<b>Dimensions</b>	330mm x 218mm
<b>I/O Options</b>	None
<b>NPU Options</b>	4167



CONNECTIONS			
Purpose	Location	Purpose	Location
External battery	J1	Power LED & keylock	J18
Reset switch	J15	Speaker	J19
Turbo switch	J17	Turbo LED	J20

Continued on next page . . .

**GVC TECHNOLOGIES, INC.**  
486-33/50

... continued from previous page

USER CONFIGURABLE SETTINGS		
Function	Jumper	Position
í Factory configured - do not alter	J21	N/A
í Monitor type select color	J2	Closed
Monitor type select monochrome	J2	Open

DRAM CONFIGURATION				
Size	Bank 0	Bank 1	Bank 2	Bank 3
1MB	(4) 256K x 9	NONE	NONE	NONE
2MB	(4) 256K x 9	(4) 256K x 9	NONE	NONE
4MB	(4) 1M x 9	NONE	NONE	NONE
5MB	(4) 256K x 9	(4) 1M x 9	NONE	NONE
6MB	(4) 256K x 9	(4) 256K x 9	(4) 1M x 9	NONE
8MB	(4) 1M x 9	(4) 1M x 9	NONE	NONE
9MB	(4) 256K x 9	(4) 1M x 9	(4) 1M x 9	NONE
10MB	(4) 256K x 9	(4) 256K x 9	(4) 1M x 9	(4) 1M x 9
12MB	(4) 1M x 9	(4) 1M x 9	(4) 1M x 9	NONE
16MB	(4) 1M x 9	(4) 1M x 9	(4) 1M x 9	(4) 1M x 9
16MB	(4) 4M x 9	NONE	NONE	NONE
20MB	(4) 1M x 9	(4) 4M x 9	NONE	NONE
24MB	(4) 1M x 9	(4) 1M x 9	(4) 4M x 9	NONE
32MB	(4) 4M x 9	(4) 4M x 9	NONE	NONE
48MB	(4) 4M x 9	(4) 4M x 9	(4) 4M x 9	NONE
64MB	(4) 4M x 9	(4) 4M x 9	(4) 4M x 9	(4) 4M x 9

CACHE CONFIGURATION			
Size	Bank 0	Bank 1	TAG
32KB	(4) 8K x 8	NONE	(2) 16K x 4
64KB	(4) 8K x 8	(4) 8K x 8	(2) 16K x 4
128KB	(4) 32K x 8	NONE	(2) 16K x 4
256KB	(4) 32K x 8	(4) 32K x 8	(2) 16K x 4

CACHE JUMPER CONFIGURATION									
Size	J3	J4	J5	J6	J7	J8	J9	J10	J11
32KB	1 & 2	1 & 2	1 & 2	1 & 2	1 & 2	1 & 2	1 & 2	1 & 2	1 & 2
64KB	2 & 3	1 & 2	2 & 3	2 & 3	1 & 2	1 & 2	2 & 3	1 & 2	1 & 2
128KB	2 & 3	2 & 3	1 & 2	2 & 3	2 & 3	1 & 2	1 & 2	1 & 2	2 & 3
256KB	2 & 3	2 & 3	2 & 3	2 & 3	2 & 3	2 & 3	2 & 3	2 & 3	2 & 3

Note: Pins designated should be in the closed position.

CPU TYPE CONFIGURATION			
Type	J12	J13	J14
80486SX	pins 2 & 3 closed	pins 2 & 3 closed	Open
80487SX	pins 1 & 2 closed	pins 2 & 3 closed	Closed
80486DX	pins 1 & 2 closed	pins 1 & 2 closed	Closed